

# e-MOBILie

## From Concept to HiL Testbench



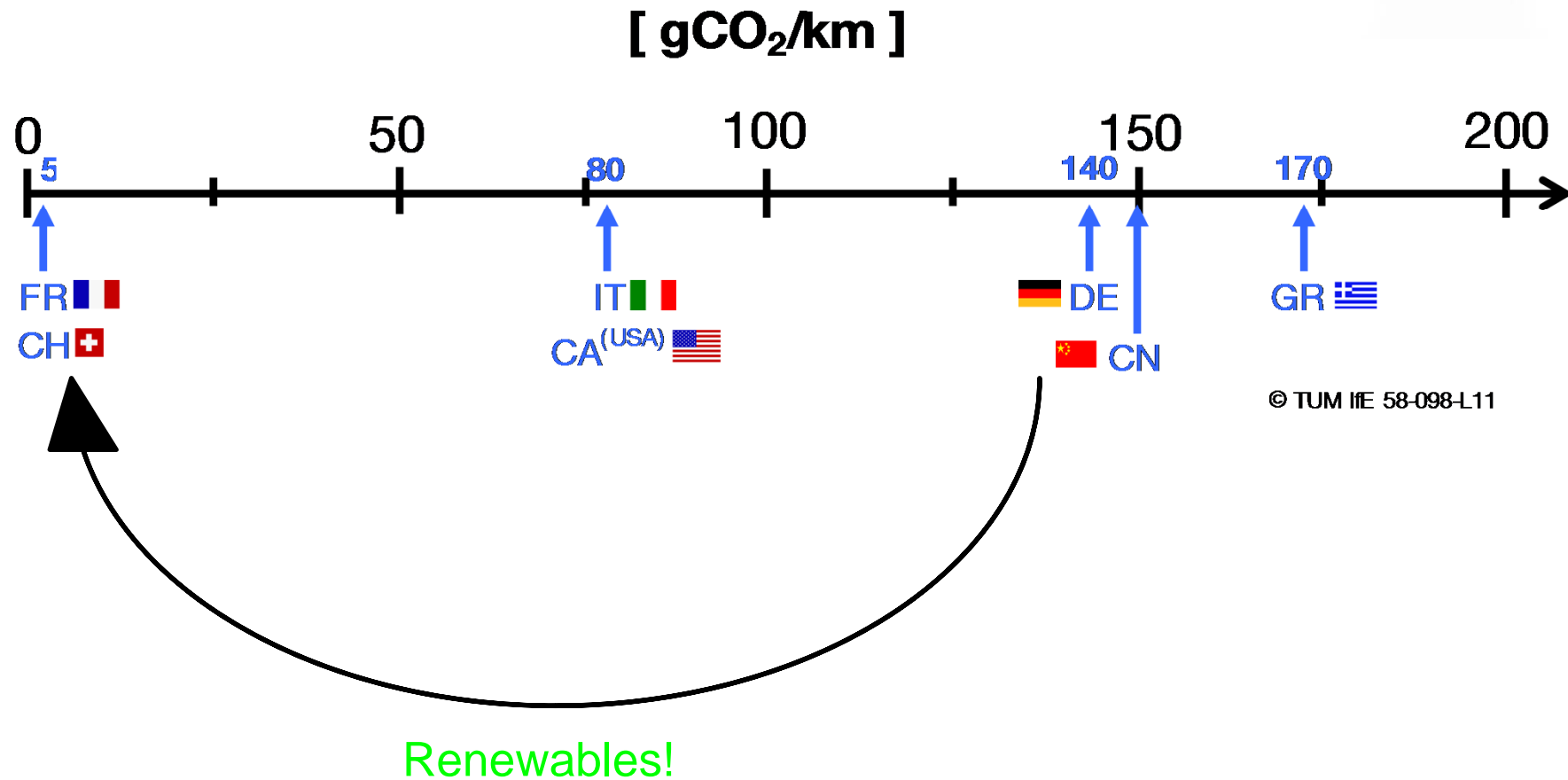
Dipl.-Ing. Christian Kandler, Dipl.-math. Manuel Lindauer  
**4th Colloquium of MSE „Energy in motion“**  
Garching, 03.07.2014

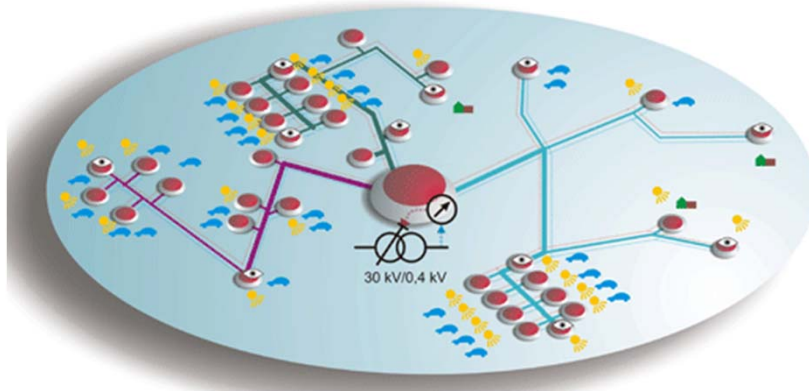
- Motivation
- Project e-MOBILie
- From Concept Development to HiL Testbench
  - Software Simulation and HiL Testbench
  - Control strategies for heat pumps in smart buildings
- Demonstration case

# Motivation

## Electromobility: Carbon Emissions for Driving Purposes

- Energy Demand EV (Plug2Wheel): 15 kWh/100km
- Controlled Off-Peak Charging
- Power Plant Park: 2015





Quelle: Energie AG Upper Austria

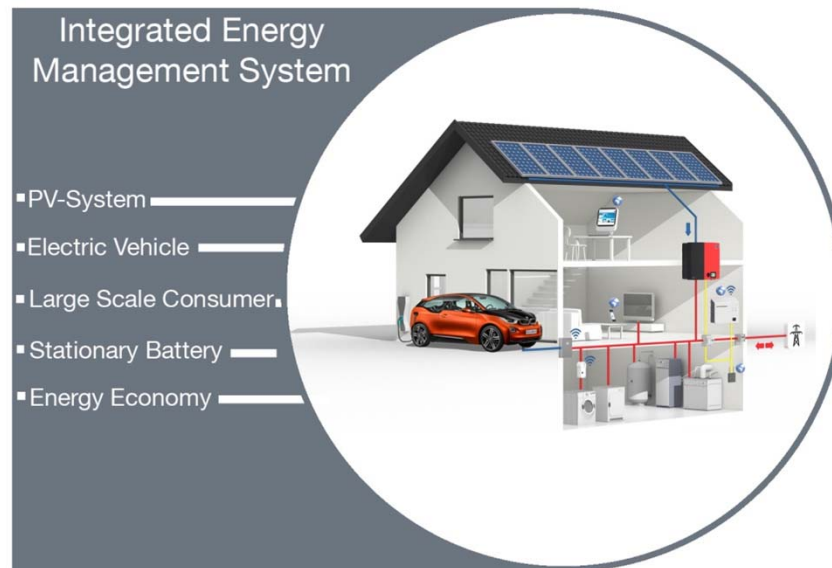
### Advantages:

- Local Supply of Peak Load and Reactive Power
- Decentralised Production can lower Demand of Large-Scale Plants (Storages, Power Plants)
- Less transmission & transformation losses (2000-2012: -28% AG EnBil)

### Disadvantages:

- High Excess Production
- Supply Shortfalls
- Possible Grid Imbalances

→ 'smart' Integration into the Complex of a Residential Building

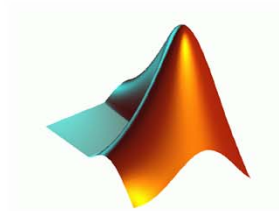


### Goals

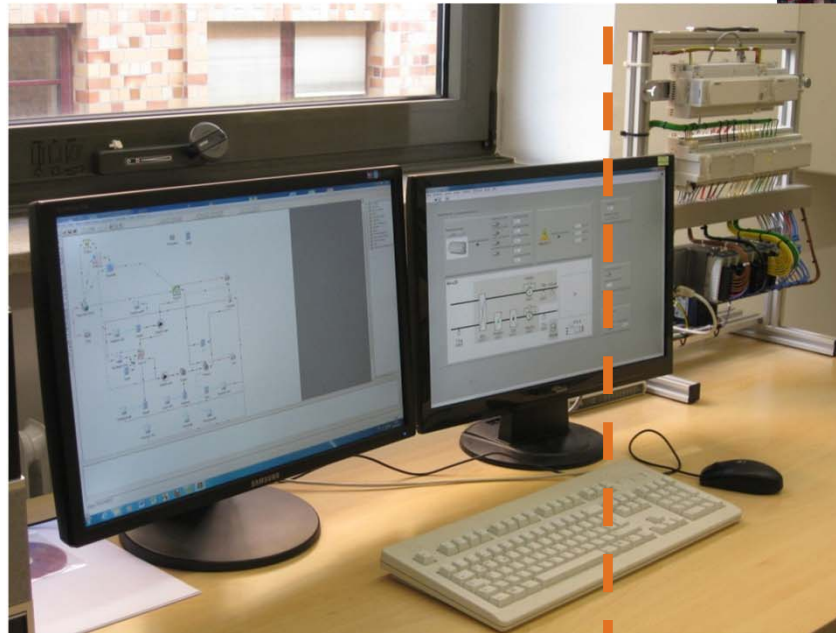
- Development and implementation of hierarchical and distributed energy management systems
- evaluation of the environmental benefits of a combination between an electric vehicle and local energy generation

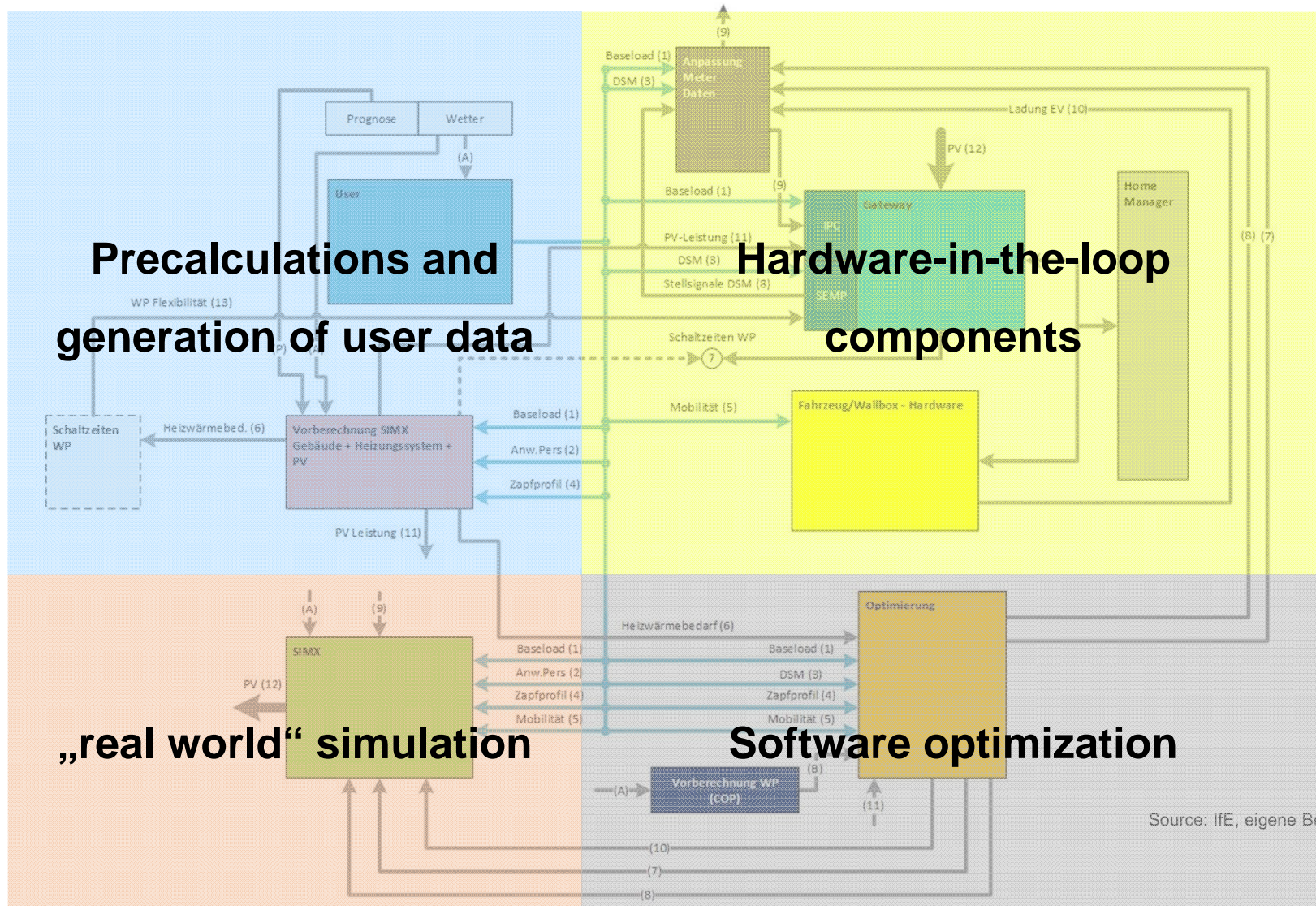
### Main focus:

- Implementation and operation of an hardware-in-the-loop test bench for evaluating the integrated energy management concept (iEM)
- Demonstration of these concepts in a real residential building and a plus-energy parking garage



© TUM IfE 69-040-L13





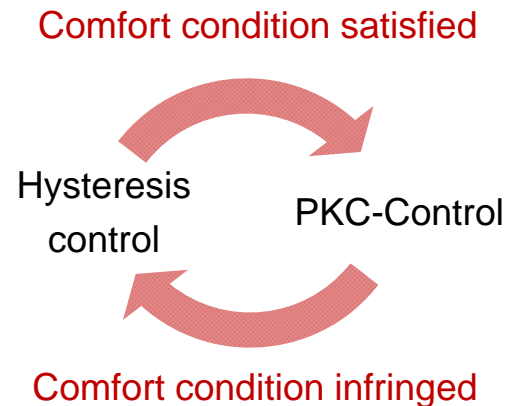
Source: IfE, eigene Berechnungen

### Hysteresis control

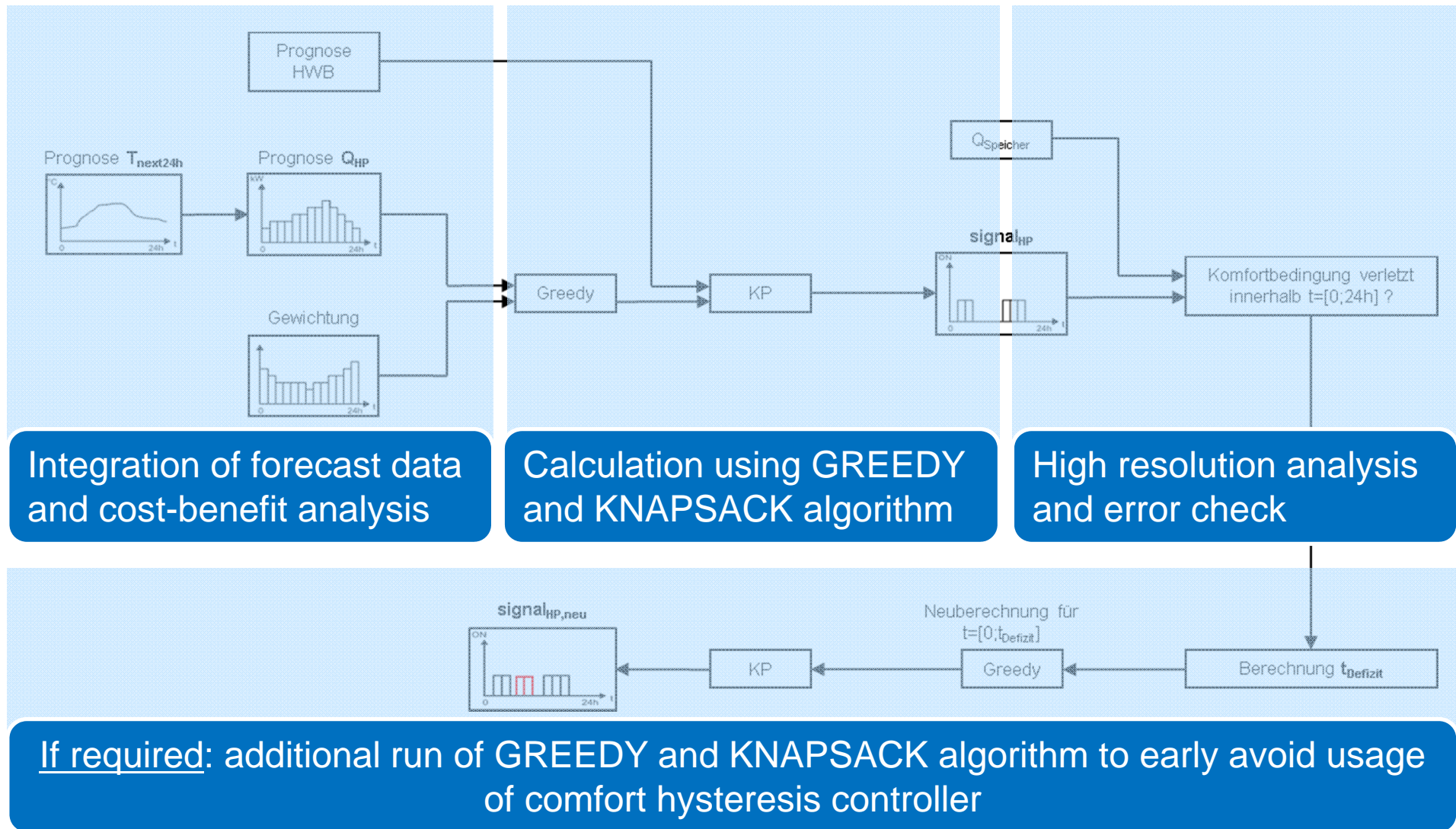
- Depending on room temperature
- Active on violation of comfort conditions
- Goal: keeping  $T_{\text{Room}}$  in specific borders

### PKC-Control (PKC = Predictive Knapsack Control)

- Predictive and adaptiv strategy
- Robustness to uncertainties of weather forecast
- Using appropriate weighting (electricity price, PV feed-in)
- Goal: better integration of heat pumps into home energy system



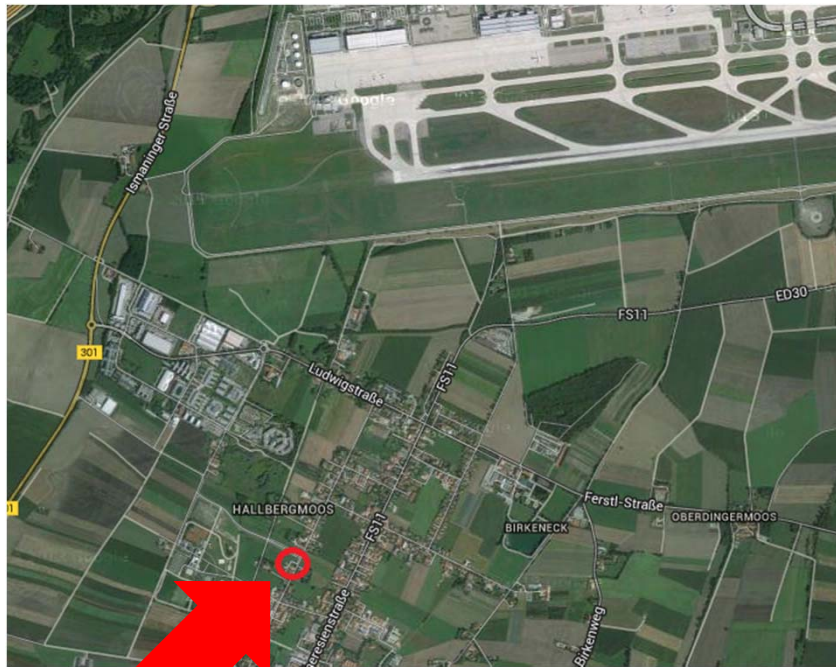




Source: IfE, BA Hitzelberger

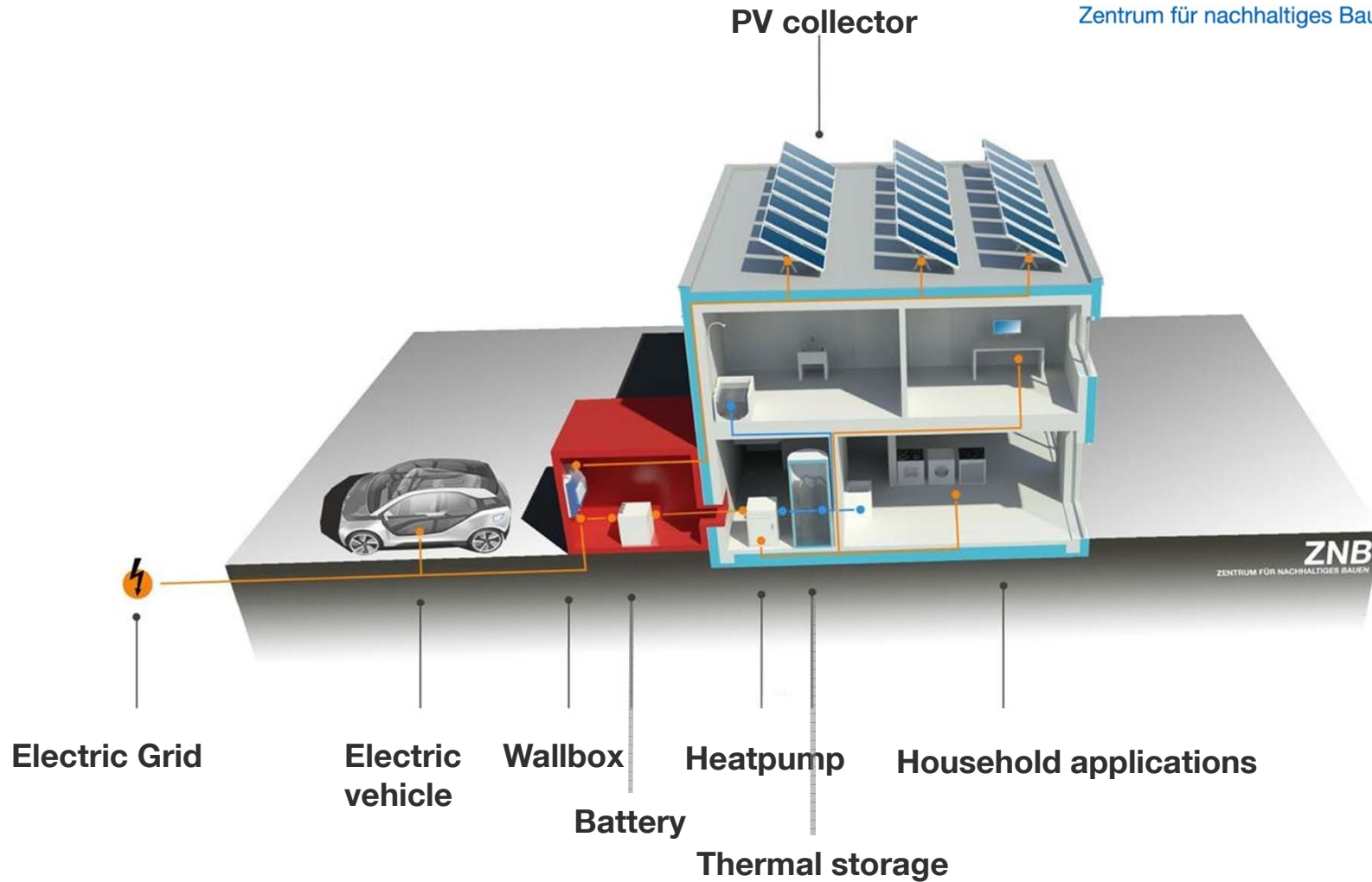
# e-MOBILie

## Demonstration Case (Location & Building)



# e-MOBILie

## Demonstration Case (Building Technology)





Dipl.-Ing.  
**Christian  
Kandler**

Lehrstuhl für Energiewirtschaft  
und Anwendungstechnik



Technische Universität München  
Fakultät für Elektrotechnik und  
Informationstechnik

Arcisstraße 21  
80333 München

Tel +49 89 289-28310

Fax +49 89 289-28313

[christian.kandler@tum.de](mailto:christian.kandler@tum.de)



Dipl.-Math.  
**Manuel  
Lindauer**

Zentrum für nachhaltiges Bauen  
Lehrstuhl für Bauphysik

Technische Universität München  
Ingenieur fakultät Bau Geo  
Umwelt

Arcisstraße 21  
80333 München

Tel +49 89 289-23969

Fax +49 89 289-23991

[manuel.lindauer@tum.de](mailto:manuel.lindauer@tum.de)