

RESEARCH ARTICLE

Open Access

Predictors of the accuracy of pulse-contour cardiac index and suggestion of a calibration-index: a prospective evaluation and validation study

Wolfgang Huber^{1*}, Jonas Koenig¹, Sebastian Mair¹, Tibor Schuster², Bernd Saugel¹, Florian Eyer³, Veit Phillip¹, Caroline Schultheiss¹, Philipp Thies¹, Ulrich Mayr¹, Henrik Einwächter¹, Matthias Treiber¹, Josef Hoellthaler¹ and Roland M Schmid¹

Abstract

Background: Cardiac Index (CI) is a key-parameter of hemodynamic monitoring. Indicator-dilution is considered as gold standard and can be obtained by pulmonary arterial catheter or transpulmonary thermodilution (TPTD; Cltd). Furthermore, CI can be estimated by *Pulse-Contour-Analysis (PCA)* using arterial wave-form analysis (Clpc). Obviously, adjustment of Clpc to Cltd initially improves the accuracy of Clpc. Despite uncertainty after which time accuracy of Clpc might be inappropriate, recalibration by TPTD is suggested after a maximum of 8 h.

We hypothesized that accuracy of Clpc might not only depend on time to last TPTD, but also on changes of the arterial wave curve detectable by PCA itself. Therefore, we tried to prospectively characterize predictors of accuracy and precision of Clpc (primary outcome). In addition to “time to last TPTD” we evaluated potential predictors detectable solely by pulse-contour-analysis.

Finally, the study aimed to develop a pulse-contour-derived “calibration-index” suggesting recalibration and to validate these results in an independent collective.

Methods: In 28 intensive-care-patients with PiCCO-monitoring (Pulsion Medical-Systems, Germany) 56 datasets were recorded. Clpc-values at baseline and after intervals of 1 h, 2 h, 4 h, 6 h and 8 h were compared to Cltd derived from immediately subsequent TPTD. Results from this evaluation-collective were validated in an independent validation-collective (49 patients, 67 datasets).

Results: Mean bias values Cltd-Clpc after different intervals ranged between -0.248 and 0.112 L/min/m². Percentage-error after different intervals to last TPTD ranged between 18.6% (evaluation, 2 h-interval) and 40.3% (validation, 6 h-interval). In the merged data, percentage-error was below 30% after 1 h, 2 h, 4 h and 8 h, and exceeded 30% only after 6 h. “Time to last calibration” was neither associated to accuracy nor to precision of Clpc in any uni- or multivariate analysis.

By contrast, the height of Clpc and particularly changes in Clpc compared to last thermodilution-derived Cltd (base) univariately and independently predicted the bias Cltd-Clpc in both collectives.

Relative changes of Clpc compared to Cltd(base) exceeding thresholds derived from the *evaluation-collective* ($-11.6\% < \text{Clpc-Cltd}(\text{base})/\text{Cltd}(\text{base}) < 7.4\%$) were confirmed as significant predictors of a bias $|\text{Cltd-Clpc}| \geq 20\%$ in the *validation-collective*.

(Continued on next page)

* Correspondence: Wolfgang.Huber@lrz.tum.de

¹II. Medizinische Klinik und Poliklinik, Klinikum rechts der Isar, Technische Universität München, Ismaninger Strasse 22, D-81675 Munich, Germany
Full list of author information is available at the end of the article

(Continued from previous page)

Conclusion: Recalibration triggered by changes of CI_{pc} compared to CI_{td}(base) derived from last calibration should be preferred to fixed intervals.

Keywords: Hemodynamic monitoring, Pulse contour analysis, Cardiac output, Cardiac index, Calibration, Transpulmonary thermodilution, Accuracy, Precision

Background

Cardiac index (CI) is a key-parameter of hemodynamic monitoring. Indicator-dilution is considered as gold standard and can be obtained by pulmonary arterial catheter or transpulmonary thermodilution (TPTD; CI_{td}) [1-4].

Furthermore, CI can be estimated by *Pulse-Contour-Analysis (PCA)* using arterial wave-form analysis to derive stroke volume. Pulse-Contour-Analysis has been introduced in the early 1970s [5,6] and can be used for “beat by beat”-tracking of CI after initial calibration with indicator dilution or other techniques [7-13]. Finally, Pulse-Contour-Analysis combined with biometric and empirical data can provide an uncalibrated estimate of CI [14-18].

There is consensus that indicator dilution techniques provide best accuracy. However, due to rapid and unpredictable changes in hemodynamics in critically ill, the usefulness of *intermittent* CI-determinations has been questioned, and *continuous* CI-monitoring might enhance sensitivity of CI-monitoring [19].

Although numerous studies have demonstrated appropriate correlation of PCA-derived CI (CI_{pc}) immediately after calibration [7-13], the need for recalibration and the interval to the next calibration still are matter of debate [20-24]. As a minimum consensus, most manufacturers recommend recalibration after a maximum of 8 h.

However, some data suggest more frequent recalibration with intervals as short as one hour [20,21]. Nevertheless, there are a number of reasons to limit the frequency of TPTDs:

TPTD requires a certain amount of time of qualified personal.

Furthermore, calibration with a limited number of TPTDs carries a certain risk of imprecision that might sum up in case of repeated measurements. At least three TPTDs are required to provide acceptable precision $\leq 10\%$ and detection of changes in CI $\geq 15\%$ that are generally considered as clinically relevant [25-27].

However, repeated TPTDs with at least 45 ml per triplicate measurement might result in a substantial fluid load with impact on hemodynamics itself.

With the data available being not fully consistent and in part retrospective, there is a lack of studies prospectively evaluating the impact of pre-defined periods without calibration and other possible predictors of imprecision, all systematically determined within the same patient.

We hypothesized that accuracy of CI_{pc} might not only depend on time to last TPTD, but also on changes of the arterial wave curve detectable by PCA itself.

Therefore, the aims of our study were

- to prospectively investigate accuracy and precision of CI_{pc} after pre-defined intervals of 1 h, 2 h, 4 h, 6 h and 8 h after the last TPTD,
- to evaluate the impact of “time to the last TPTD-calibration” and other factors on the agreement of CI_{pc} and CI_{td},
- to derive a “calibration index” solely from PCA-parameters comprising a formula predicting the disagreement of CI_{pc} and CI_{td} and an alarming-function suggesting recalibration when predicted disagreement exceeds user-defined limits (e.g. $>15\%$ or $>0.5 \text{ L/min/m}^2$), and
- to validate these results in an independent second collective.

Methods

The study was approved by the institutional review board (Ethikkommission der Fakultät für Medizin der Technischen Universität München; Ismaninger Straße 22; 81675 München). The need of informed consent was waived.

In 28 consecutive patients (evaluation collective) with PiCCO-monitoring treated in a general intensive care unit (ICU) or a toxicology ICU, 56 data-sets each including a total of 6 triplicate TPTDs at baseline and after intervals of 1 h, 2 h, 4 h, 6 h and 8 h after the last TPTD were recorded within 21 hours. Since follow-up TPTDs recalibrated CI_{td}, these measurements also provided the baseline CI_{td} for the next interval. The sequence of intervals was randomized.

Results derived from this *evaluation-collective* were validated in an independent *validation-collective* of 49 patients with 67 datasets. Due to practical reasons (e.g. transport, external intervention) 21/615 (3%) of measurements could not be performed within ± 10 min of the scheduled time and could not be included in the final analysis. A total of 123 datasets with 594 measurements were finally analyzed.

CI_{pc} and CI_{td} were determined using the PiCCO-System (Pulsion Medical Systems, Munich, Germany) as described before [21,28]. Briefly, a 5-French thermistor-tipped arterial line (Pulsioath, Pulsion Medical Systems) placed in the femoral artery and a hemodynamic monitor

(PiCCO-Plus; PiCCO-2, Pulsion Medical Systems) were used for analysis of pulse-contour and a thermodilution curve after injection of a cold indicator-bolus (15 mL saline 0.9%) through a central-venous catheter (CVC).

CIpc recorded immediately before recalibration with triplicate TPTD was compared to CItd derived from the new TPTD.

Primary endpoint: Analysis of parameters independently associated with the bias CItd-CIpc. These parameters included “time to last calibration” as well as factors continuously provided by pulse contour analysis and their changes compared to baseline.

Secondary endpoints: Analysis of parameters associated with bias CItd-CIpc exceeding pre-defined thresholds (20%, 15% of CItd and 0.5 L/min/m²) and development of a “calibration-index” suggesting recalibration based on parameters derived from pulse-contour-analysis and/or last thermodilution.

Statistics

To describe accuracy and precision of CIpc compared to CItd after different intervals, we performed analyses according to Bland-Altman [29]. To avoid analysis of repeated measurements and different numbers of measurements, Bland-Altman-analyses included only one dataset per patient (first series) and were performed separately for each interval. Percentage-error was calculated as described previously [30].

All other analyses were performed including all datasets except as indicated. For appropriate consideration of multiple measurements per patient in these analyses, uni- and multivariable regression models were fitted in a “Generalized Linear Mixed Model” (GLMM) framework. ROC-analyses were performed to assess discriminative ability of predictor variables regarding pre-defined thresholds of the bias CItd-CIpc (exceeding 20%, 15% of CItd or 0.5 L/min/m²). Percentages were calculated based on the measurements with valid data. In the course of GLMM-analysis, standard-errors of regression coefficients were reported. In order to consider repeated measurements per individual, partial correlation-coefficients (r_{part}) were calculated for bivariate correlation.

Predictors of bias exceeding critical thresholds derived from the evaluation-collective were analysed in the validation-collective based on ROC- and percentage-error-analysis.

All statistical analyses were performed by statistician co-author TS using IBM SPSS Statistics 21 (SPSS Inc., Chicago, IL, USA).

Results

Patients characteristics and interventions

Patients characteristics are demonstrated in Table 1.

About 50% of all TPTD-measurements were performed during the use of catecholamines, 59% during mechanical ventilation. Within 123 series of measurements, there were changes in the use of vasoactive drugs in 71/123 (58%), in positioning (prone vs. supine) in 4/123 (3%), initiation or termination of renal replacement-therapy (RRT) in 18/123 (15%) and some kind of other intervention (volume challenge, cardiopulmonary resuscitation, endoscopy, tracheotomy) in 31/123 (25%) datasets.

Mean bias of CItd and CIpc

Neither in the evaluation-collective (4.15 ± 1.46 vs. 4.09 ± 1.41 L/min/m²; $p = 0.265$) nor in the validation-collective (4.07 ± 1.27 vs. 4.07 ± 1.21 L/min/m²; $p = 0.555$) there was a significant difference between CIpc and CItd. Mean bias values were -0.0606 ± 0.603 and 0.00261 ± 0.610 L/min/m², respectively.

Bias values exceeding pre-defined thresholds

Despite low *mean* bias values, “CItd-CIpc” exceeded critical thresholds in a relevant number of *single comparisons* (Table 2). In the merged data, bias values exceeding $\pm 20\%$, $\pm 15\%$ and ± 0.5 L/min/m² were observed in 85/594 (14.3%), 138/594 (23.2%) and 166/594 (27.9%) of measurements.

Impact of interval to last TPTD calibration

Figure 1 and Table 3 demonstrate mean bias and percentage-error values of CIpc vs. CItd 1 h, 2 h, 4 h, 6 h and 8 h after the last TPTD calibration.

Mean bias values in general were low and ranged between -0.248 (evaluation-collective, after 6 h-interval) and 0.112 L/min/m² (validation-collective after 2 h-interval). In both collectives mean bias values were not dependent on time to last calibration (Table 3, Figure 1). Notched boxplots further support that bias CItd-CIpc did not increase over time and did not differ after various times to last calibration: Only if the notches of two boxplots do not overlap, the two medians differ [31,32].

Percentage-error values ranged between 18.6% (evaluation, 2 h-interval) and 40.3% (validation, 6 h-interval; Table 3).

Bland-Altman-diagrams (one data set per patient; Figure 2) with lower and upper limits of agreement and bias-values demonstrate comparable accuracy and precision for the different intervals to last TPTD.

Univariate analysis of potential predictors of bias CItd-CIpc including “time to last TPTD”

Similarly to the data based on one data set per patient (Figures 1 and 2 and Table 3), the interval to last TPTD was not associated to the bias CItd-CIpc when including repeated data sets for correlation analysis. Comparison of bias CItd-CIpc to “time to last calibration”

Table 1 Patients characteristics and interventions

| | Evaluation | Validation | Merged data |
|--|---------------|---------------|----------------|
| Patients characteristics | | | |
| Number of patients | 28 | 49 | 77 |
| Male | 19 (67.9%) | 20 (40.8%) | 39 (50.6%) |
| Female | 9 (32.1%) | 29 (59.2%) | 38 (49.4%) |
| Height [m] | 1.73 ± 0.076 | 1.68 ± 0.077 | 1.70 ± 0.083 |
| Weight [kg] | 75.4 ± 14.1 | 70.21 ± 17.2 | 72.2 ± 16.2 |
| Age [years] | 60.2 ± 11.8 | 61.1 ± 15.0 | 60.7 ± 13.9 |
| APACHE-II | 23.5 ± 5.6 | 22.3 ± 8.6 | 22.7 ± 7.6 |
| Etiology | | | |
| ARDS | 8/28 (28.6%) | 17/49 (34.7%) | 25/77 (32.5%) |
| Liver Disease | 8 /28(28.6%) | 10/49 (20.4%) | 18/77 (23.4%) |
| Gastric Disease | 3/28 (10.7%) | 3/49 (6.1%) | 6/77 (7.8%) |
| Sepsis | 3/28 (10.7%) | 11/49 (22.4%) | 14/77 (18.2%) |
| Cardiogenic Shock | 3/28 (10.7%) | 4/49 (8.2%) | 7/77 (9.1%) |
| Affection of the central nervous system | 3/28 (10.7%) | 4/49 (8.2%) | 7/77 (9.1%) |
| Series of Measurements including | | | |
| Mechanical ventilation | 39/55 (70.9%) | 33/67 (49.3%) | 72/122 (59.0%) |
| Use of catecholamines | 30/56 (53.6%) | 31/67 (46.3%) | 61/123 (49.6%) |
| Series of Measurements with Interventions | | | |
| Change in catecholamine dose | 29/56 (51.8%) | 29/67 (43.3%) | 58/123 (47.2%) |
| Terlipressin | 4/56 (7.1%) | 5/67 (7.5%) | 9/123 (7.3%) |
| Change in Terlipressin | 3/56 (5.4%) | 3/67 (4.5%) | 6/123 (4.9%) |
| Other vasoactive drug (Clonidin...) | 10/56 (17.9%) | 1/67 (1.5%) | 11/123 (8.9%) |
| Change in other vasoactive drug | 10/56 (17.9%) | 1/67 (1.5%) | 11/123 (8.9%) |
| Any vasoactive drug | 38/56 (67.9%) | 33/67 (49.3%) | 71/123 (57.7%) |
| Change in any vasoactive drug | 37/56 (66.1%) | 31/67 (46.3%) | 68/123 (55.3%) |
| Renal replacement therapy (RRT) | 12/56 (21.4%) | 7/67 (10.4%) | 19/123 (15.4%) |
| Change in RRT | 11/56 (19.6%) | 7/67 (10.4%) | 18/123 (14.6%) |
| Change in positioning (prone/supine) | 1/56 (1.8%) | 3/67 (4.5%) | 4/123 (3.3%) |
| Pleural puncture | 1/56 (1.8%) | 2/67 (3.0%) | 3/123 (2.4%) |
| Transfusion | 5/56 (8.9%) | 2/67 (3.0%) | 7/123 (5.7%) |
| Cardioversion | 1/56 (1.8%) | 1/67 (1.5%) | 2/123 (1.6%) |
| Change in heart rhythm | 4/56 (7.1%) | 3/67 (4.5%) | 7 /123 (5.7%) |
| Change in ventilation mode | 10/56 (17.9%) | 1/67 (1.5%) | 11/123 (8.9%) |

provided poor coefficients of partial correlation r_{part} and p-values in evaluation-collective ($r_{\text{part}} = -0.09$; $p = 0.536$), validation-collective ($r_{\text{part}} = 0.083$; $p = 0.605$) and merged data ($r_{\text{part}} = 0.076$; $p = 0.363$). As demonstrated in Table 4 and Figure 3, bias CItd-CIpc was most strongly associated to the difference CIpc-CItd(base) ($r_{\text{part}} = -0.592$ (evaluation-collective), $r_{\text{part}} = -0.630$ (validation-collective) and $r_{\text{part}} = -0.606$ (merged data); $p < 0.001$ for both collectives and merged data). The second strongest predictor of the bias CItd-CIpc was CIpc itself ($r_{\text{part}} = -0.367$ (evaluation), $r_{\text{part}} = -0.573$ (validation) and $r_{\text{part}} = -0.466$

(merged data; $p < 0.001$ for both collectives and merged data; Table 4; Figure 4).

Among the other predictors, a modest association to the bias CItd-CIpc was found for changes in Pulse Pressure (PP) which was significant in evaluation- ($r = -0.356$; $p < 0.001$), validation- ($r = -0.188$; $p = 0.023$) and merged collective ($r = -0.260$; $p < 0.001$).

In addition to these associations of *absolute* bias CItd-CIpc to *absolute* changes in the above-mentioned predictors, *relative* bias (CItd-CIpc)/CItd was similarly associated to *relative* changes in the predictors (Table 4).

Table 2 Percentages of bias (Cltd-Clpc)*-values exceeding critical thresholds

| Threshold of Bias Cltd-Clpc | Evaluation | Validation | Merged |
|--|----------------|----------------|-----------------|
| Bias Cltd-Clpc ≥ 20% | 13/280 (4.6%) | 20/314 (6.4%) | 33/594 (5.6%) |
| Bias Cltd-Clpc ≤ -20% | 25/280 (8.9%) | 27/314 (8.6%) | 52/594 (8.8%) |
| Bias Cltd-Clpc ≥ 20% | 38/280 (13.6%) | 47/314 (15.0%) | 85/594 (14.3%) |
| Bias Cltd-Clpc ≥ 15% | 26/280 (9.3%) | 36/314 (11.5%) | 62/594 (10.4%) |
| Bias Cltd-Clpc ≤ -15% | 40/280 (14.3%) | 36/314 (11.5%) | 76/594 (12.8%) |
| Bias Cltd-Clpc ≥ 15% | 66/280 (23.6%) | 72/314 (22.9%) | 138/594 (23.2%) |
| Bias Cltd-Clpc ≥ 0.5 L/min/m ² | 34/280 (12.1%) | 43/314 (13.7%) | 77/594 (13.0%) |
| Bias Cltd-Clpc ≤ -0.5 L/min/m ² | 46/280 (16.4%) | 43/314 (13.7%) | 89/594 (15.0%) |
| Bias Cltd-Clpc ≥ 0.5 L/min/m ² | 80/280 (28.5%) | 86/314 (27.4%) | 166/594 (27.9%) |

*Cltd: Thermodilution-derived Cardiac Index.

*Clpc: Pulse-contour-derived Cardiac Index.

Multivariate analysis regarding prediction of absolute bias Cltd-Clpc

In multivariate GLMM-analysis, absolute bias Cltd-Clpc was independently associated to Clpc-Cltd(base) (p < 0.001) and to Clpc itself (p < 0.001), but not the interval to the last TPTD. These findings were consistent for evaluation, validation and merged data. Similar results were obtained for “relative bias” Cltd-Clpc/Cltd (data not shown).

Univariate ROC-analysis regarding critical thresholds of bias Cltd-Clpc

Bias values exceeding ±15%, ±20% and ±0.5 L/min/m² in general were best predicted by absolute or relative changes in Clpc compared to Cltd derived from the previous

TPTD (Clpc-Cltd(base)). Figure 5 (thermoplot) demonstrates ROC-AUCs regarding bias values exceeding ±20%.

E.g. a decrease in Clpc-Cltd(base) of at least 11.62% provided a sensitivity, specificity and accuracy of 85%, 89% and 89% to predict a bias Cltd-Clpc ≥20% in the evaluation-collective. An increase of at least 7.43% in Clpc-Cltd(base) provided a sensitivity, specificity and accuracy of 76%, 76% and 76% to predict a bias Cltd-Clpc ≤ -20%.

Multivariate ROC-analysis regarding critical thresholds of bias Cltd-Clpc

Multivariate analysis demonstrated independent association of relative changes in Clpc-Cltd(base) to relative bias (Cltd-Clpc)/Cltd exceeding ±15%, 20% and 0.5 L/min/m². By contrast, “interval to last TPTD” was not independently

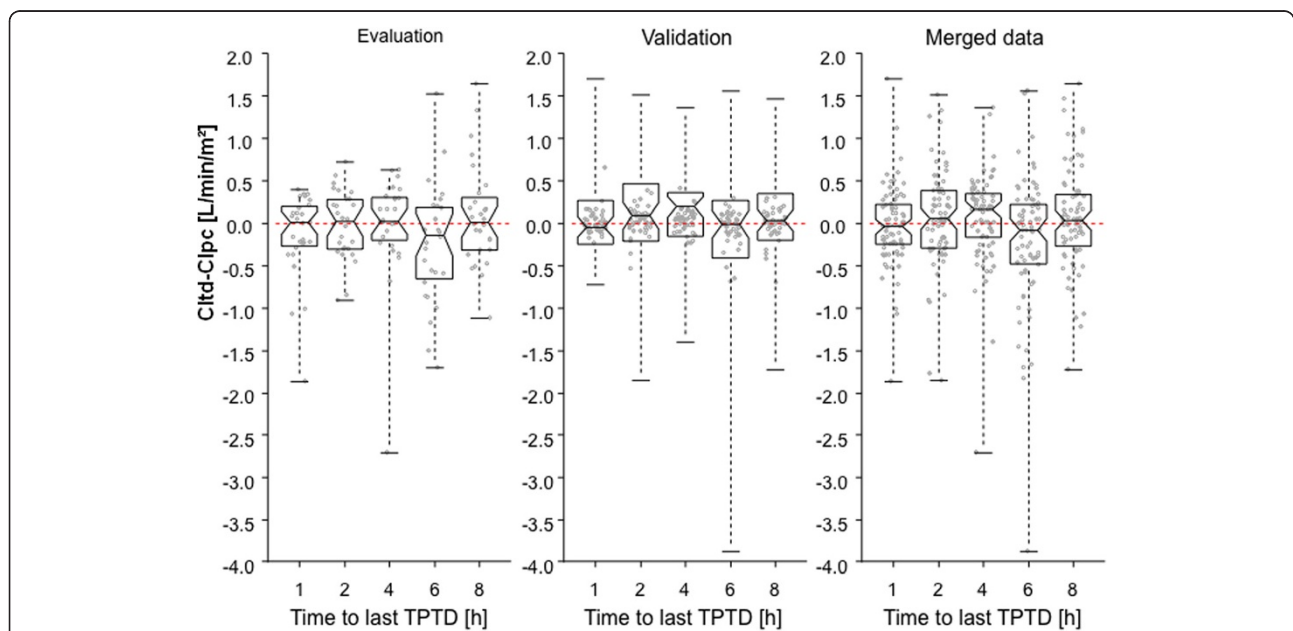


Figure 1 Notched boxplots demonstrate that bias Cltd-Clpc did not increase over time and did not differ after various times to last calibration. Only if the notches of two boxplots do not overlap, this is ‘strong evidence’ that the two medians differ [31,32]. Cltd: Thermodilution-derived Cardiac Index. Clpc: Pulse-contour-derived Cardiac Index. TPTD: Transpulmonary thermodilution.

Table 3 Percentage-error and bias CItD-Clpc values after 1 h, 2 h, 4 h, 6 h and 8 h without thermodilution (one data set per patient)

| Interval to last thermodilution | Evaluation | | Validation | | Merged data | |
|---------------------------------|------------------|-----------------------------------|------------------|-----------------------------------|------------------|-----------------------------------|
| | Percentage Error | Mean bias [L/min/m ²] | Percentage Error | Mean bias [L/min/m ²] | Percentage Error | Mean bias [L/min/m ²] |
| 1 h | 23.2% | -0,144 ± 0,501 | 23.4% | 0.026 ± 0.465 | 23.5 | -0.039 ± 0.483 |
| 2 h | 18.6% | -0,021 ± 0,400 | 32.5% | 0.112 ± 0.660 | 27.7 | 0.061 ± 0.576 |
| 4 h | 28.5% | -0,020 ± 0,618 | 24.4% | 0.097 ± 0.490 | 26.1 | 0.054 ± 0.539 |
| 6 h | 30.9% | -0,248 ± 0,690 | 40.3% | -0.200 ± 0.861 | 36.6 | -0.218 ± 0.794 |
| 8 h | 27.9% | 0,082 ± 0,600 | 31.0 | 0.033 ± 0.632 | 29.6 | 0.062 ± 0.615 |

associated to relative bias (CItD-Clpc)/CItD exceeding these thresholds.

Predictive capabilities of relative changes in “Clpc-CItD(base)” regarding several thresholds could be further improved by also including changes in “Index of Left Ventricular Contractility” (dPmax) (Figure 6) or changes in PP in a GLMM-derived multivariate model.

E.g. a model derived from the evaluation-collective including changes in Clpc-CItD(base) and in dPmax slightly improved ROC-AUC regarding relative bias exceeding ≥15% in the evaluation-collective (AUC 0.883 vs. 0.857) as well as in the validation-collective (0.761 vs. 0.720) (Figure 6).

Validation of predictors of substantial bias derived from the evaluation collective in the validation collective

Analysis of evaluation data demonstrated that a decrease in Clpc-CItD(base) of at least 11.62% or an increase of at

least 7.43% significantly predicted a bias CItD-Clpc exceeding ±20% (see above).

To assess the potential practical use of these thresholds derived from the *evaluation*-collective in the *validation*-collective, we compared the 8 h percentage-error of patients in the *validation*-collective staying within and without these critical thresholds. In case of repeated inclusion, only the first 8 h-observation-period was analysed. 8 h-measurements in 26 validation-patients staying within the critical evaluation-thresholds of relative changes in Clpc compared to CItD(base) (-11.62% < (Clpc-CItD(base))/CItD(base) < 7.43%) provided a percentage-error of 22.6% compared to 44.0% for those 16 validation-patients outside of these evaluation-thresholds. Similar analysis of the validation-data after a 1 h-interval demonstrated a percentage-error of 9.7% in 29 patients staying within the critical thresholds of relative changes in Clpc compared to

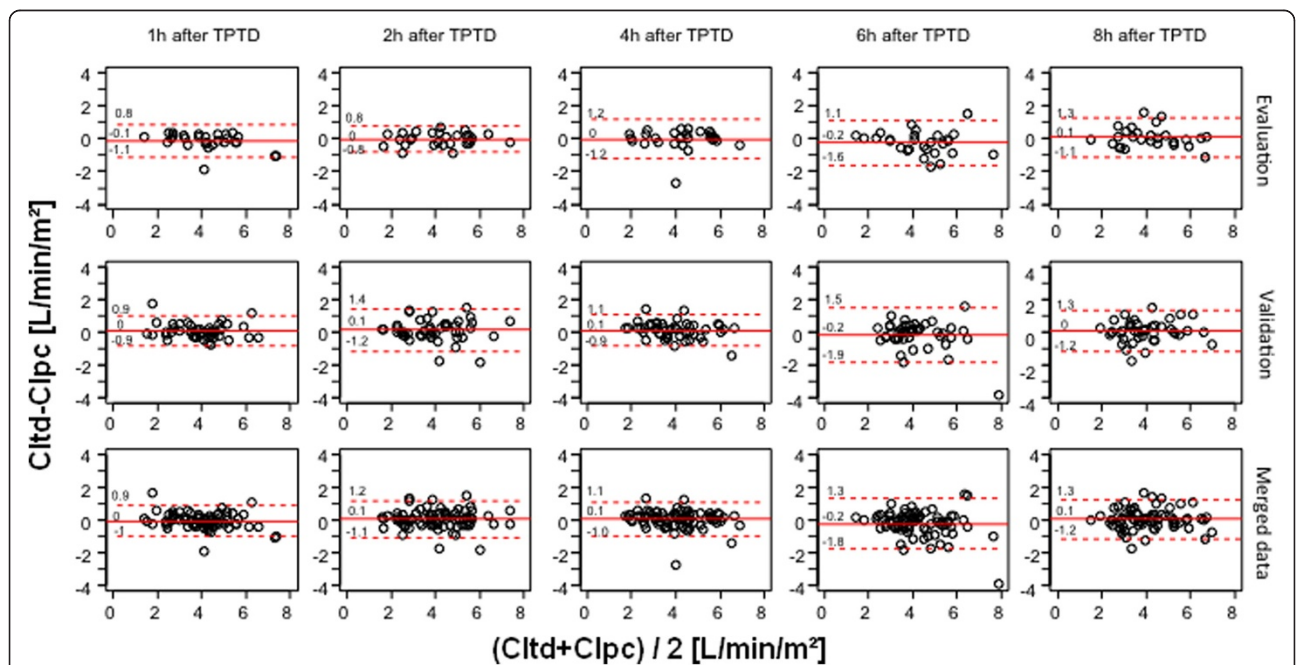


Figure 2 Bland-Altman plots performed separately for each interval and including only one data set per patient demonstrate low bias CItD-Clpc (solid line) and comparable limits of agreement (dashed lines) 1 h, 2 h, 4 h, 6 h and 8 h after the last thermodilution. CItD: Thermodilution-derived Cardiac Index. Clpc: Pulse-contour-derived Cardiac Index.

Table 4 Partial correlation of predictors of absolute and relative bias (relative bias: Cltd-Clpc/Cltd)* (all data)

| Parameter | Correlation to "absolute bias" (coefficient of partial correlation) | | | Correlation to "relative bias" (coefficient of partial correlation) | | |
|------------------------------------|---|--------------------|--------------------|---|--------------------|--------------------|
| | Evaluation | Validation | Merged | Evaluation | Validation | Merged |
| Intervall | -0.090 (p = 0.536) | 0.083 (p = 0.605) | 0.076 (p = 0.363) | -0.014 (p = 0.997) | 0.083 (p = 0.597) | 0.039 (p = 0.836) |
| Clpc | -0.367 (p < 0.001) | -0.573 (p < 0.001) | -0.466 (p < 0.001) | -0.355 (p < 0.001) | -0.529 (p < 0.001) | -0.422 (p < 0.001) |
| Clpc-Cltd(base) [abs] [†] | -0.592 (p < 0.001) | -0.630 (p < 0.001) | -0.606 (p < 0.001) | -0.529 (p < 0.001) | -0.577 (p < 0.001) | -0.547 (p < 0.001) |
| Clpc-Cltd(base) [rel] | -0.564 (p < 0.001) | -0.632 (p < 0.001) | -0.574 (p < 0.001) | -0.570 (p < 0.001) | -0.612 (p < 0.001) | -0.583 (p < 0.001) |
| Delta-dPmax [abs] [‡] | -0.279 (p < 0.001) | -0.115 (p = 0.325) | -0.170 (p = 0.001) | -0.240 (p = 0.001) | -0.136 (p = 0.173) | -0.168 (p = 0.001) |
| Delta-dPmax [rel] | -0.286 (p < 0.001) | -0.091 (p = 0.533) | -0.162 (p = 0.002) | -0.255 (p < 0.001) | -0.110 (p = 0.353) | -0.166 (p = 0.002) |
| Delta-MAP [abs] | -0.257 (p < 0.001) | -0.114 (p = 0.324) | -0.179 (p = 0.001) | -0.224 (p = 0.003) | -0.137 (p = 0.164) | -0.180 (p < 0.001) |
| Delta-MAP [rel] | -0.243 (p = 0.001) | -0.119 (p = 0.286) | -0.165 (p = 0.002) | -0.196 (p = 0.015) | -0.157 (p = 0.080) | -0.162 (p = 0.002) |
| Delta-PP [abs] [§] | -0.356 (p < 0.001) | -0.188 (p = 0.023) | -0.260 (p < 0.001) | -0.323 (p < 0.001) | -0.222 (p = 0.004) | -0.262 (p < 0.001) |
| Delta-PP [rel] | -0.336 (p < 0.001) | -0.179 (p = 0.036) | -0.239 (p < 0.001) | -0.309 (p < 0.001) | -0.202 (p = 0.011) | -0.243 (p < 0.001) |
| Delta-RRsyst [abs] | -0.321 (p < 0.001) | -0.155 (p = 0.093) | -0.227 (p < 0.001) | -0.284 (p < 0.001) | -0.205 (p = 0.009) | -0.233 (p < 0.001) |
| Delta-RRsyst [rel] | -0.320 (p < 0.001) | -0.151 (p = 0.106) | -0.223 (p < 0.001) | -0.278 (p < 0.001) | -0.197 (p = 0.013) | -0.226 (p < 0.001) |
| Delta-RRdiast [abs] | -0.148 (p = 0.116) | -0.085 (p = 0.587) | -0.090 (p = 0.214) | -0.125 (p = 0.238) | -0.096 (p = 0.476) | -0.096 (p = 0.162) |
| Delta-RRdiast [rel] | -0.182 (p = 0.029) | -0.089 (p = 0.549) | -0.114 (p = 0.068) | -0.173 (p = 0.044) | -0.102 (p = 0.420) | -0.118 (p = 0.051) |

*Cltd: Thermodilution-derived Cardiac Index; Clpc: Pulse-contour-derived Cardiac Index.

[†]Clpc-Cltd(base): Cardiac index measured at previous (baseline) thermodilution.

[‡]dPmax: "Index of Left Ventricular Contractility".

[§]PP: Pulse pressure.

[rel]: relative changes compared to time of the last thermodilution.

[abs]: absolute changes compared to time of the last thermodilution.

Cltd(base) compared to 36.7% for patients outside of these thresholds.

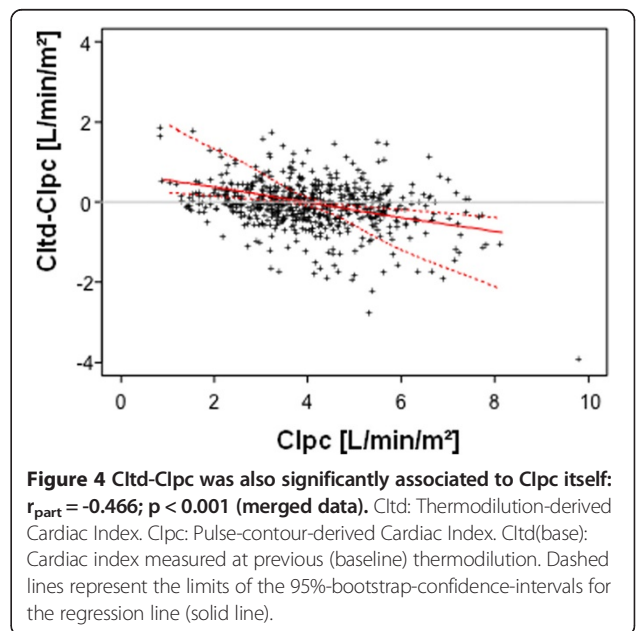
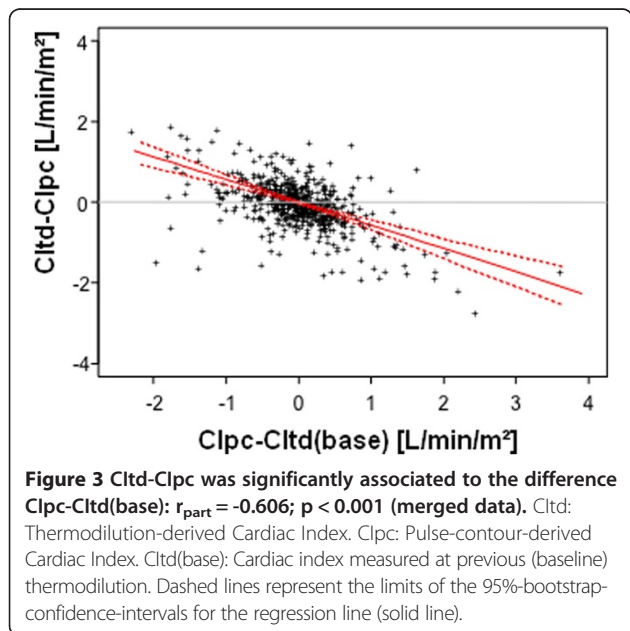
Suggestion for a calibration-index-formula

To provide a first suggestion for a future calibration-index, we finally performed multiple regression analysis of

the merged data resulting in a formula predicting bias Cltd-Clpc:

$$\text{Estimated absolute bias} : 0.208 - 0.528 * (\text{Clpc} - \text{Cltd}(\text{base})) - 0.052 * \text{Clpc}.$$

Clpc (p = 0.003) and Clpc-Cltd(base) (p < 0.001) were independently associated to Cltd-Clpc, whereas the other



| | Evaluation | Validation | Merged data | Evaluation | Validation | Merged data | |
|-----------------------|------------|------------|------------------|------------|------------|-------------|-----------------------|
| Clpc-CItD(base) [rel] | 0.726 | 0.938 | 0.812 | 0.812 | 0.757 | 0.783 | Clpc-CItD(base) [rel] |
| Clpc-CItD(base) [abs] | 0.711 | 0.909 | 0.791 | 0.812 | 0.734 | 0.773 | Clpc-CItD(base) [abs] |
| Clpc | 0.786 | 0.799 | 0.787 | 0.545 | 0.678 | 0.61 | Δ-PP [abs] |
| Δ-dPmax [abs] | 0.574 | 0.759 | 0.645 | 0.542 | 0.68 | 0.61 | Δ-PP [rel] |
| Δ-dPmax [rel] | 0.575 | 0.749 | 0.641 | 0.514 | 0.653 | 0.58 | Δ-RRsystol [abs] |
| Δ-PP [rel] | 0.606 | 0.662 | 0.629 | 0.514 | 0.651 | 0.58 | Δ-RRsystol [rel] |
| Δ-PP [abs] | 0.608 | 0.65 | 0.626 | 0.538 | 0.594 | 0.564 | Δ-dPmax [rel] |
| Δ-RRsystol [abs] | 0.558 | 0.618 | 0.584 | 0.555 | 0.57 | 0.563 | Interval to TPTD |
| Δ-RRsystol [rel] | 0.554 | 0.617 | 0.58 | 0.609 | 0.519 | 0.563 | Clpc |
| Interval to TPTD | 0.504 | 0.694 | 0.574 | 0.538 | 0.575 | 0.557 | Δ-dPmax [abs] |
| Δ-MAP [abs] | 0.518 | 0.628 | 0.54 | 0.519 | 0.566 | 0.54 | Δ-MAP [abs] |
| Δ-MAP [rel] | 0.523 | 0.627 | 0.537 | 0.512 | 0.556 | 0.532 | Δ-MAP [rel] |
| Δ-HR [rel] | 0.573 | 0.535 | 0.536 | 0.522 | 0.541 | 0.532 | Δ-RRdiastol [abs] |
| Δ-HR [abs] | 0.578 | 0.551 | 0.532 | 0.554 | 0.509 | 0.53 | Δ-HR [rel] |
| Δ-RRdiastol [rel] | 0.503 | 0.501 | 0.503 | 0.514 | 0.544 | 0.529 | Δ-RRdiastol [rel] |
| Δ-RRdiastol [abs] | 0.502 | 0.504 | 0.502 | 0.552 | 0.505 | 0.527 | Δ-HR [abs] |
| Cltd-Clpc ≥ 20% | | | Cltd-Clpc ≤ -20% | | | | |

Figure 5 Thermoplot demonstrating “Area under the Curve” (AUC) values from Receiver Operating Characteristic (ROC)-analyses regarding bias Clt-Clpc exceeding ≥20% of Cltd. Y-axis ranges from 0.5 (worthless for prediction; intense blue) to 1.0 (best prediction; intense red). The variables were aligned according to merged data. Cltd: Thermodilution-derived Cardiac Index. Clpc: Pulse-contour-derived Cardiac Index. Cltd(base): Cardiac index measured at previous (baseline) thermodilution. dPmax: “Index of Left Ventricular Contractility”. PP: Pulse Pressure. TPTD: Transpulmonary thermodilution. MAP: mean arterial pressure. RR_{syst}, RR_{diast}: systolic and diastolic pressure. HR: Heart rate. Δ-values compare data to corresponding values at the time of the last TPTD. [rel]: relative changes compared to time of the last TPTD. [abs]: absolute changes compared to time of the last TPTD.

parameters included in the GLMM-analysis (time to last calibration, changes in PP and in dPmax) failed significance.

Discussion

Repeated calibration of Pulse-Contour-Analysis-derived Clpc by thermodilution is considered to improve accuracy and precision of Clpc [3-13,20-27,31]. However, frequent recalibration is time-consuming, might result in inaccuracies itself and in a substantial fluid-load. Current suggestion to repeat calibration after a maximum of 8 h is in part based on a lack of studies investigating longer calibration-free periods. Several studies suggest more frequent TPTD up to once per hour [20,21]. However, “time to last calibration” so far has not been independently associated with the bias Clpc-Cltd in a prospective study.

Therefore, we prospectively evaluated the accuracy of Clpc after pre-defined calibration-free periods. The main results of this study can be summarized as follows:

Mean bias of Clpc vs. Cltd was acceptable after all time-periods. However, about 23% of Clpc-values

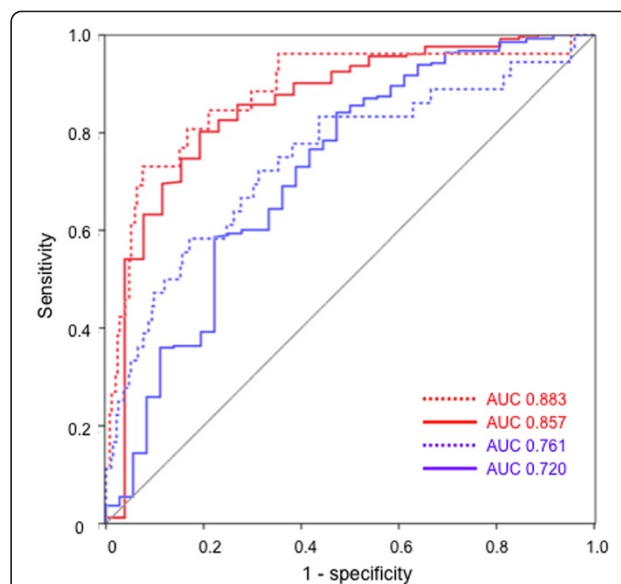


Figure 6 Receiver Operating Characteristic (ROC)-analyses regarding bias Clt-Clpc exceeding ≥15%. Solid lines represent prediction by Clpc-CItD(base), dashed lines are derived from a multivariate model including changes in Clpc-CItD(base) and in dPmax in the evaluation-collective. Red lines: Evaluation-collective. Blue lines: Validation-collective. Cltd: Thermodilution-derived Cardiac Index. Clpc: Pulse-contour-derived Cardiac Index. Cltd(base): Cardiac index measured at previous (baseline) thermodilution.

deviated ≥15% from immediately subsequent Cltd. This emphasizes the need for repeated recalibration.

Adaptation of recalibration to a fixed time-based scheme is not substantiated by our data, since “time to last calibration” was neither associated to accuracy nor precision of Clpc.

By contrast, relative and absolute changes in Clpc compared to the last TPTD-derived Cltd(base) were independent predictors of relative and absolute bias Cltd-Clpc.

Critical thresholds of changes in Clpc compared to Cltd(base) derived from the *evaluation-collective* were confirmed as predictors of the bias Cltd-Clpc in the *validation-collective*.

Multivariate analyses suggest that more complex mathematical models also including Clpc itself, changes in PP and dPmax might further improve prediction of disagreement between Clpc and Cltd.

In our study Clpc provided appropriate accuracy irrespective of the interval to last TPTD with mean bias values between -0.21 and 0.068 L/min/m² (merged data). These low mean bias values in all subgroups are in accordance with two studies evaluating PiCCO-derived Clpc with mean bias values of 0.03-0.16 L/min/m² [20] and 0.06-0.29 L/min/m² [24] after different intervals to last TPTD [20,24] and different dosages of noradrenalin [24].

Most of the other previous studies similarly demonstrated appropriate accuracy of PiCCO-derived Clpc

[3-13,21-24]. However, data on *precision* of CIpc are more conflicting. This might be in part related to the setting of the studies: While early studies were aimed at “feasibility” of CIpc and global percentage-error evaluation in selected collectives [3-9], more recent trials analysed more heterogeneous populations also allowing subgroup-analyses regarding precision [20,24].

Driven by the practical need to define “when” to re-calibrate, *time-dependency* of CIpc-accuracy is an obvious hypothesis. However, this is neither well substantiated by previous investigations nor by our study: Although percentage-error was within the critical threshold of 30% only within the 1st hour in Hamzaoui’s study, time to last TPTD was not an independent predictor of precision in multivariate analysis [20].

In our merged data, percentage-error was below 30% within the first 4 hours and after 8 hours and exceeded 30% only after 6 hours. In addition to percentage-error comparison after different times to last TPTD, we performed univariate and multivariate analysis regarding agreement of single CIpc-values with CItd in two different collectives and in the merged data. Furthermore, we performed notched box-plot-analyses- favouring comparison of medians over means - for pre-defined intervals to last TPTD. None of these analyses provided evidence for time-dependency of the agreement of CIpc and CItd.

This is also in accordance with a study by Gruenewald et al. who did not find any hints for an association of CIpc-precision with interval to last TPTD [24].

In general, assessment of CIpc is mainly based on the assumption that left-ventricular stroke-volume is proportional to the area under the systolic portion of the arterial pressure-curve (AUSPC). Depending on compliance and systemic vascular resistance, identical AUSPC-values result in different stroke-volumes. Therefore, most of the pulse-contour-technologies try to correct for these

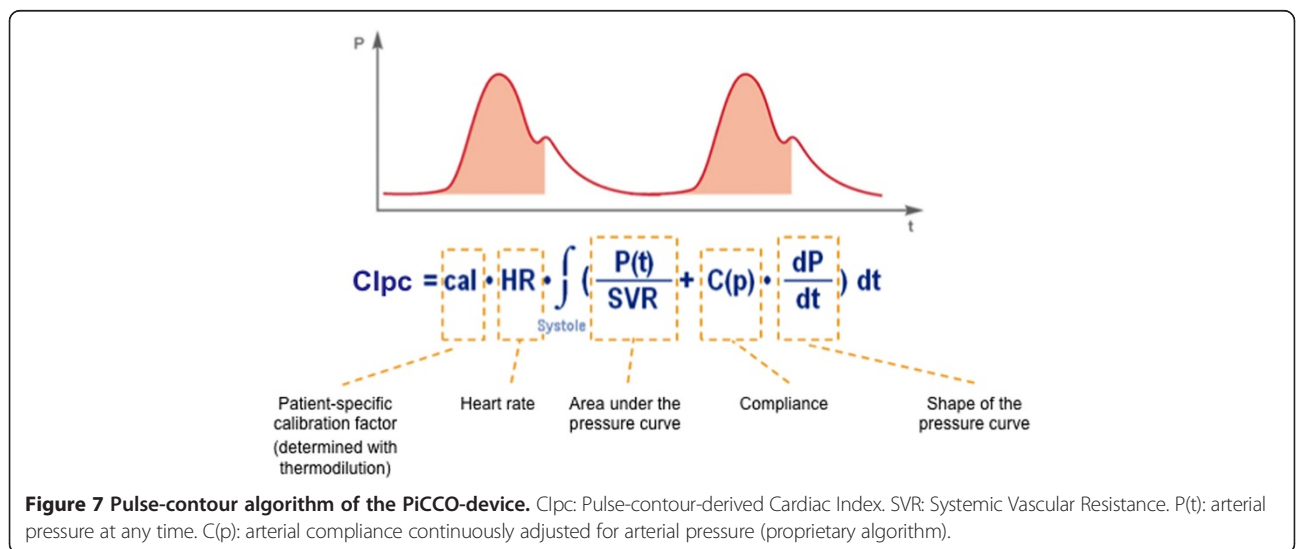
individual factors. These individual factors can be assumed to be composed of *static* (individual biometry: age, gender, height, weight etc.) and *dynamic* components (changes in compliance and resistance/impedance).

Early pulse-contour-approaches were mainly based on *intermittent* re-adjustment. More recent approaches also tried *continuous* correction based on more sophisticated waveform-analysis also including shape of the waveform, position of the dirotic notch and analysis of the post-systolic area behind the dirotic notch. This part represents passive emptying of the aorta due to the Windkessel-effect [10]. Additionally, pulse-contour-algorithms include empirical and biometric data to a different extent. This finally resulted in approaches of CIpc-assessment exclusively based on pulse-contour-analysis, empiric and biometric data, thus totally rejecting any calibration [14-18].

The algorithm used in recent PiCCO-devices is based on *intermittent* recalibration as well as *continuous* adjustment. With the exact algorithm being proprietary, it can be assumed that TPTD-derived calibration has impact on a “patient-specific calibration-factor” remaining constant until the next calibration (“cal”; Figure 7). Furthermore, calibration intermittently modifies continuous adjustment of Systemic Vascular Resistance (SVR) and compliance (“C(p)”).

This might in part explain that parameters adjustable by the above-mentioned formula such as changes in heart rate and arterial pressure were not substantially associated to the deviation of CIpc in our study. By contrast, changes in CIpc compared to CItd(base) and CIpc itself were independently associated with the deviation of CIpc. Independent association of CIpc to the bias CItd-CIpc suggests a systematic deviation which offers potential of systematic correction for an improved algorithm.

CIpc-CItd(base) was - by far - the most important predictor of inaccuracy of CIpc. With these changes being



easily and continuously detectable by pulse-contour itself, our data suggest this parameter as a main component of a “calibration-index” triggering recalibration. Prediction of CIpc-deviation exceeding pre-defined thresholds was - in part - improved by including changes in PP and/or dPmax.

However, even a calibration-index restricted to this single predictor “CIpc-CItd(base)” provided ROC-AUCs between 0.75 and 0.81 in the prediction of CIpc-deviation exceeding several critical thresholds.

To investigate reproducibility of these data, we validated a calibration-index based on cut-offs derived from 28 evaluation-patients: PE-values were markedly lower for *validation*-patients-measurements within *evaluation*-measurements-derived thresholds (changes in CIpc compared to CItd(base) between -11.6% and +7.4%) 8 h after TPTD (22.6% vs. 44.0%), and even 1 h after TPTD (9.7% vs. 36.7%).

In addition to our findings of an association of inaccuracy of CIpc to CIpc-CItd(base) and CIpc itself, a number of clinical and/or non-hemodynamic predictors might be associated with reduced accuracy of CIpc.

Data on the impact of (changes in) vasopressor-therapy are -in part- conflicting: In an animal model, Bein and co-workers demonstrated marked deteriorated accuracy and precision after haemorrhage and application of noradrenalin [23]. In a recent study in 73 ICU-patients, the authors demonstrated *improved* accuracy of CIpc in patients with high doses of noradrenalin (>0.1 µg/kg/min) compared to lower doses of noradrenalin or no noradrenalin [24]. This might be explained by noradrenalin -induced arterial stiffness stabilizing compliance and resistance.

Furthermore, changes in SVR have been suggested as predictors of inaccuracy of CIpc. Rodig et al. demonstrated marked impaired bias and precision of CIpc after marked changes in SVR >60% induced by phenylephrine [7]. Yamashita et al. showed reduced accuracy and precision of CIpc after SVR-decreases induced by prostaglandin [33]. However, in Hamzaoui’s study neither univariate nor multivariate analysis demonstrated an association of changes in SVR to the agreement of CIpc and CItd [20].

Among several other parameters and interventions, increased IAP [22], haemorrhage [23] and volume resuscitation [22] have been associated with decreased accuracy of CIpc.

Practical implications

The present recommendation to recalibrate after “8 h or in case of instability or events probably associated with inaccuracy of CIpc” is difficult to perform: Even under study conditions TPTD-intervals frequently exceed 8 h [24].

Regarding an increasing number of factors and interventions (see Table 1) potentially associated to inaccuracy of

CIpc, permanent screening for these factors is cumbersome and hardly feasible.

Furthermore, many of the above-mentioned events associated to CIpc-inaccuracy (vasopressors, hemorrhage, increased intra-abdominal pressure etc.) can be assumed to result in changes in arterial pulse-wave. Our data support that a calibration-index derived solely and continuously from pulse-contour-analysis might be a useful tool to improve the yield of relevant TPTD-measurements and to reduce “routine”-measurements passed down from devices incapable of combining intermittent and continuous monitoring. Summarizing different analyses of this study, re-calibration should be considered in case of changes of CIpc of more than 10% compared to the last CItd.

Limitations of the study

Despite inclusion of two independent collectives our data are derived from only two ICUs. Although our data suggest that the (in) accuracy of CIpc is predominantly associated to changes in CIpc compared to baseline CItd, we cannot definitely rule out a certain impact of time to last calibration due to the limited number of patients.

Regarding ethical considerations we did not extend the calibration-free observation-period above the maximum interval of 8 h suggested by the manufacturers.

At first glance the study design not including a pre-defined sequence of interventions (e.g. fluid-challenge, changes in vasoactive drugs) might be considered to be observational. However, based on clinical requirements most of the patients experienced substantial changes in treatment modalities during the 21 h observation-period including onset and termination of renal-replacement-therapy, changes in ventilator-settings and vasoactive drugs (Table 1).

Conclusion

At present recalibration of CIpc by TPTD is suggested after a maximum of 8 h, although there is an ongoing debate to which extent accuracy of CIpc depends on the “time to last calibration”. By contrast, this study suggests that recalibration triggered by changes of the CIpc itself compared to the last calibration should be preferred to fixed intervals to last TPTD.

Key messages

- 1) At present recalibration of CIpc by TPTD is suggested after a maximum of 8 h, although there is an ongoing debate to which extent accuracy of CIpc depends on the time to last calibration.
- 2) None of several analyses of this study supports that accuracy and/or precision of CIpc depend on the time to last calibration by TPTD.

- 3) By contrast, our data suggest that recalibration triggered by changes of CI_{pc} itself compared to CI_{td} (base) derived from the previous TPTD should be preferred to fixed intervals.
- 4) A “calibration-index” derived solely and continuously from pulse-contour-analysis might be a useful tool to improve the yield of relevant TPTD-measurements and to reduce “routine”-measurements after rigid intervals.
- 5) In addition to CI_{pc}-CI_{td}(base), changes in pulse pressure and/or dP_{max} might further improve a continuously derived “calibration-index” suggesting recalibration.

Abbreviations

AUC: Area under the curve; AUSPC: Area under the systolic portion of the arterial pressure-curve; CO: Cardiac output; CI: Cardiac index; CI_{pc}: Cardiac index derived from pulse contour analysis; CI_{td}: Cardiac index derived from transpulmonary thermodilution; CI_{td}(base): Cardiac index derived from the last (previous) transpulmonary thermodilution; CVC: Central venous catheter; dP_{max}: Index of left ventricular contractility; EVLWI: Extravascular lung-water index; GEDVI: Global end-diastolic volume index; GLMM: Generalized Linear Mixed Model; ICU: Intensive care unit; PCA: Pulse-Contour-Analysis; PE: Percentage error; PP: Pulse pressure; RRT: Renal replacement-therapy; ROC: Receiver operating characteristics; r_{part} : Coefficient of correlation r derived from partial correlation analysis; TPTD: Transpulmonary thermodilution.

Competing interests

Wolfgang Huber and Bernd Saugel collaborate with Pulsion Medical Systems AG as members of the Medical Advisory Board. All authors declare that they have no competing interests.

Authors' contributions

WH performed conception and design of the study, participated in the analysis of the data, drafted the manuscript and finally approved the manuscript. JK performed the majority of measurements in the evaluation collective, participated in analysis of the data and in drafting the manuscript and finally approved the manuscript. SM performed the majority of measurements in the validation collective, participated in analysis of the data and in drafting the manuscript and finally approved the manuscript. TS participated in acquisition of the data, performed the statistical analyses, participated in drafting the manuscript and finally approved the manuscript. BS participated in conception and design of the study, participated in drafting the manuscript and finally approved the manuscript. FE performed measurements in the toxicology ICU, participated in analysis of the data and in drafting the manuscript and finally approved the manuscript. VP participated in acquisition and analysis of the data, participated in drafting the manuscript and finally approved the manuscript. CS participated in acquisition and analysis of the data, participated in drafting the manuscript and finally approved the manuscript. PT participated in acquisition and analysis of the data, participated in drafting the manuscript and finally approved the manuscript. UM participated in acquisition and analysis of the data, participated in drafting the manuscript and finally approved the manuscript. HE participated in concept and design of the study, participated in acquisition and analysis of the data, participated in drafting the manuscript and finally approved the manuscript. MT participated in acquisition and analysis of the data, participated in drafting the manuscript and finally approved the manuscript. JH participated in acquisition and analysis of the data, participated in drafting the manuscript and finally approved the manuscript. RS substantially contributed to conception and design of the study, participated in the analysis of the data, participated in drafting the manuscript and finally approved the manuscript. All authors read and approved the final manuscript.

Author details

¹II. Medizinische Klinik und Poliklinik, Klinikum rechts der Isar, Technische Universität München, Ismaninger Strasse 22, D-81675 Munich, Germany.

²Institut für Medizinische Statistik und Epidemiologie, Klinikum Rechts der Isar, Technische Universität München, Ismaninger Strasse 22, D-81675 Munich, Germany. ³Toxikologische Abteilung, II. Medizinische Klinik und Poliklinik, Klinikum rechts der Isar, Technische Universität München, Ismaninger Strasse 22, D-81675 Munich, Germany.

Received: 26 March 2014 Accepted: 19 March 2015

Published online: 02 April 2015

References

1. Reuter DA, Huang C, Edrich T, Sherman SK, Eltzschig HK. Cardiac output monitoring using indicator-dilution techniques: basics, limits, and perspectives. *Anesth Analg*. 2010;110:799–811.
2. Marx G, Schuerholz T, Sumpelmann R, Simon T, Leuwer M. Comparison of cardiac output measurements by arterial trans-cardiopulmonary and pulmonary arterial thermodilution with direct Fick in septic shock. *Eur J Anaesthesiol*. 2005;22:129–34.
3. Felbinger TW, Reuter DA, Eltzschig HK, Bayerlein J, Goetz AE. Cardiac index measurements during rapid preload changes: a comparison of pulmonary artery thermodilution with arterial pulse contour analysis. *J Clin Anesth*. 2005;17:241–8.
4. Friedman Z, Berkenstadt H, Margalit N, Segal E, Perel A. Cardiac output assessed by arterial thermodilution during exsanguination and fluid resuscitation: experimental validation against a reference technique. *Eur J Anaesthesiol*. 2002;19:337–40.
5. Wesseling KH, Smith NT, Nichols WW, De Wit B, Beneken JEW. Beat to beat cardiac output from the arterial pressure pulse contour. In: Feldman SA, Leigh JM, Spierdijk J, editors. *Measurement anaesthesia*. Leiden: Leiden University Press; 1974. p. 148–64.
6. Wesseling KH, Purschke R, Ty Smith N, Wuest HJ, de Wit B, Weber AP. A computer module for the continuous monitoring of cardiac output in the operating theatre and the ICU. *Acta Anaesth Belgica*. 1976;27:87–102.
7. Rodig G, Prasser C, Keyl C, Liebold A, Hobbhahn J. Continuous cardiac output measurement: pulse contour analysis vs thermodilution technique in cardiac surgical patients. *Br J Anaesth*. 1999;82:525–30.
8. Buhre W, Weyland A, Kazmaier S, Hanekop GG, Baryalei MM, Sydow M, et al. Comparison of cardiac output assessed by pulse-contour analysis and thermodilution in patients undergoing minimally invasive direct coronary artery bypass grafting. *J Cardiothorac Vasc Anesth*. 1999;13:437–40.
9. Goedje O, Hoeke K, Lichtwarck-Aschoff M, Falchauer A, Lamm P, Reichart B. Continuous cardiac output by femoral arterial thermodilution calibrated pulse contour analysis: comparison with pulmonary arterial thermodilution. *Crit Care Med*. 1999;27:2407–12.
10. Goedje O, Hoke K, Goetz AE, Felbinger TW, Reuter DA, Reichart B, et al. Reliability of a new algorithm for continuous cardiac output determination by pulse-contour analysis during hemodynamic instability. *Crit Care Med*. 2002;30:52–8.
11. Felbinger TW, Reuter DA, Eltzschig HK, Moerstedt K, Goedje O, Goetz AE. Comparison of pulmonary arterial thermodilution and arterial pulse contour analysis: evaluation of a new algorithm. *J Clin Anesth*. 2002;14:296–301.
12. Della Rocca G, Costa MG, Pompei L, Coccia C, Pietropaoli P. Continuous and intermittent cardiac output measurement: pulmonary artery catheter versus aortic transpulmonary technique. *Br J Anaesth*. 2002;88:350–6.
13. Della Rocca G, Costa MG, Coccia C, Pompei L, Di Marco P, Vilardi V, et al. Cardiac output monitoring: aortic transpulmonary thermodilution and pulse contour analysis agree with standard thermodilution methods in patients undergoing lung transplantation. *Can J Anaesth*. 2003;50:707–11.
14. Button D, Weibel L, Reuthebuch O, Genoni M, Zollinger A, Hofer CK. Clinical evaluation of the FloTrac/Vigileo system and two established continuous cardiac output monitoring devices in patients undergoing cardiac surgery. *Br J Anaesth*. 2007;99:329–36.
15. Sakka SG, Kozieras J, Thuemer O, van Hout N. Measurement of cardiac output: a comparison between transpulmonary thermodilution and uncalibrated pulse contour analysis. *Br J Anaesth*. 2007;99:337–42.
16. De Backer D, Marx G, Tan A, Junker C, Van Nuffelen M, Hüter L, et al. Arterial pressure-based cardiac output monitoring: a multicenter validation of the third-generation software in septic patients. *Intensive Care Med*. 2011;37:233–40.
17. Broch O, Renner J, Höcker J, Gruenewald M, Meybohm P, Schöttler J, et al. Uncalibrated pulse power analysis fails to reliably measure cardiac output in patients undergoing coronary artery bypass surgery. *Crit Care*. 2011;15:R76.

18. Peetermans M, Verlinden W, Jacobs J, Verrijcken A, Pilate S, Van Regenmortel N, et al. Validation of less-invasive hemodynamic monitoring with Pulsioflex in critically ill patients. *Crit Care*. 2012;16:226.
19. Jellema WT, Wesseling KH, Groeneveld AB, Stoutenbeek CP, Thijs LG, van Lieshout JJ. Continuous cardiac output in septic shock by simulating a model of the aortic input impedance: A comparison with bolus injection thermodilution. *Anesthesiology*. 1999;90:1317–28.
20. Boyle M, Murgu M, O'Brien M. Assessment of drift of pulse contour cardiac output over varying recalibration intervals. *Intensive Care Med*. 2007;33:2032–3.
21. Hamzaoui O, Monnet X, Richard C, Osman D, Chemla D, Teboul JL. Effects of changes in vascular tone on the agreement between pulse contour and transpulmonary thermodilution cardiac output measurements within an up to 6-hour calibration-free period. *Crit Care Med*. 2008;36:434–40.
22. Gruenewald M, Renner J, Meybohm P, Höcker J, Scholz J, Bein B. Reliability of continuous cardiac output measurement during intra-abdominal hypertension relies on repeated calibrations: an experimental animal study. *Crit Care*. 2008;12:R132.
23. Bein B, Meybohm P, Cavus E, Renner J, Tonner PH, Steinfath M, et al. The reliability of pulse contour-derived cardiac output during hemorrhage and after vasopressor administration. *Anesth Analg*. 2007;105:107–13.
24. Gruenewald M, Meybohm P, Renner J, Broch O, Caliebe A, Weiler N, et al. Effect of norepinephrine dosage and calibration frequency on accuracy of pulse contour-derived cardiac output. *Crit Care*. 2011;15:R22.
25. Monnet X, Persichini R, Ktari M, Jozwiak M, Richard C, Teboul JL. Precision of the transpulmonary thermodilution measurements. *Crit Care*. 2011;15:R204.
26. Squara P, Cecconi M, Rhodes A, Singer M, Chiche JD. Tracking changes in cardiac output: methodological considerations for the validation of monitoring devices. *Intensive Care Med*. 2009;35:1801–8.
27. Cecconi M, Rhodes A, Poloniecki J, Della Rocca G, Grounds RM. Bench-to bedside review: the importance of the precision of the reference technique in method comparison studies—with specific reference to the measurement of cardiac output. *Crit Care*. 2009;13:201.
28. Huber W, Umgelter A, Reindl W, Franzen M, Schmidt C, von Delius S, et al. Volume assessment in patients with necrotizing pancreatitis: a comparison of intrathoracic blood volume index, central venous pressure, and hematocrit, and their correlation to cardiac index and extravascular lung water index. *Crit Care Med*. 2008;36(8):2348–54.
29. Bland JM, Altman DG. Measuring agreement in method comparison studies. *Stat Methods Med Res*. 1999;8:135–60.
30. Critchley LA, Critchley JA. A meta-analysis of studies using bias and precision statistics to compare cardiac output measurement techniques. *J Clin Monit Comput*. 1999;15:85–91.
31. Chambers JM, Cleveland WS, Kleiner B, Tukey PA. Graphical methods for data analysis. Wadsworth & Brooks/Cole, Monterey, California; 1983.
32. McGill R, Tukey JW, Larsen WA. Variations of Box Plots. *Am Stat*. 1978;32:12–6.
33. Yamashita K, Nishiyama T, Yokoyama T, Abe H, Manabe M. The effects of vasodilation on cardiac output measured by PiCCO. *J Cardiothorac Vasc Anesth*. 2008;22:688–92.

Submit your next manuscript to BioMed Central and take full advantage of:

- Convenient online submission
- Thorough peer review
- No space constraints or color figure charges
- Immediate publication on acceptance
- Inclusion in PubMed, CAS, Scopus and Google Scholar
- Research which is freely available for redistribution

Submit your manuscript at
www.biomedcentral.com/submit

