

SCIENTIFIC REPORTS



OPEN

***IDH* mutation status is associated with a distinct hypoxia/angiogenesis transcriptome signature which is non-invasively predictable with rCBV imaging in human glioma**

Received: 06 July 2015
Accepted: 14 October 2015
Published: 05 November 2015

Philipp Kickingeder¹, Felix Sahn^{2,3}, Alexander Radbruch^{1,6}, Wolfgang Wick^{4,5}, Sabine Heiland¹, Andreas von Deimling^{2,3}, Martin Bendszus¹ & Benedikt Wiestler^{1,4,5,†}

The recent identification of *IDH* mutations in gliomas and several other cancers suggests that this pathway is involved in oncogenesis; however effector functions are complex and yet incompletely understood. To study the regulatory effects of *IDH* on hypoxia-inducible-factor 1- α (*HIF1A*), a driving force in hypoxia-initiated angiogenesis, we analyzed mRNA expression profiles of 288 glioma patients and show decreased expression of *HIF1A* targets on a single-gene and pathway level, strong inhibition of upstream regulators such as *HIF1A* and downstream biological functions such as angio- and vasculogenesis in *IDH* mutant tumors. Genotype/imaging phenotype correlation analysis with relative cerebral blood volume (rCBV) MRI – a robust and non-invasive estimate of tumor angiogenesis – in 73 treatment-naive patients with low-grade and anaplastic gliomas showed that a one-unit increase in rCBV corresponded to a two-third decrease in the odds for an *IDH* mutation and correctly predicted *IDH* mutation status in 88% of patients. Together, these findings (1) show that *IDH* mutation status is associated with a distinct angiogenesis transcriptome signature which is non-invasively predictable with rCBV imaging and (2) highlight the potential future of radiogenomics (i.e. the correlation between cancer imaging and genomic features) towards a more accurate diagnostic workup of brain tumors.

Somatic mutations of the isocitrate dehydrogenase (*IDH*) 1 and 2 genes are highly frequent in lower-grade (WHO grades II-III) gliomas¹ and secondary glioblastomas² and were found to be an early event in gliomagenesis³ with profound effects on the molecular and genetic route of oncogenic progression^{4,5} and on clinical outcome⁶⁻⁸. *IDH* mutations were also observed in several other cancers, including acute myeloid

¹Department of Neuroradiology, University of Heidelberg Medical Center, Heidelberg, Germany. ²Department of Neuropathology, University of Heidelberg Medical Center, Heidelberg, Germany. ³German Cancer Consortium (DKTK), Clinical Cooperation Unit Neuropathology, German Cancer Research Center (DKFZ), Heidelberg, Germany. ⁴Neurology Clinic, University of Heidelberg Medical Center, Heidelberg, Germany. ⁵DKTK, Clinical Cooperation Unit Neurooncology, DKFZ, Heidelberg, Germany. ⁶DKFZ, Department of Radiology, Heidelberg, Germany. [†]Present address: Department of Diagnostic and Interventional Neuroradiology, Klinikum rechts der Isar der Technischen Universität München, Munich, Germany. Correspondence and requests for materials should be addressed to P.K. (email: philipp.kickingeder@med.uni-heidelberg.de)

(A) Upstream regulators in <i>IDH-1/2</i> mutant tumors				
Upstream regulator	Molecule type	p value of overlap	Activation z score	Predicted activation state
Vegf	Group	4.11E-30	-7.287	Inhibited
PDGF BB	Complex	3.94E-36	-5.17	Inhibited
<i>HIF1A</i>	Transcription regulator	6.54E-10	-4.65	Inhibited
<i>VEGFA</i>	Growth factor	1.27E-10	-4.306	Inhibited
Pdgf	Complex	2.94E-10	-3.646	Inhibited
<i>ANGPT2</i>	Growth factor	6.79E-09	-3.361	Inhibited
(B) Downstream biological functions in <i>IDH-1/2</i> mutant tumors				
Biological function		p value of overlap	Activation z score	Predicted activation state
Development of blood vessel		7.87E-30	-4.185	Decreased
Migration of endothelial cells		3.26E-15	-3.799	Decreased
Vasculogenesis		8.89E-28	-3.717	Decreased
Movement of endothelial cells		2.66E-16	-3.540	Decreased
Angiogenesis		9.39E-28	-3.556	Decreased
Neovascularization		1.53E-10	-2.451	Decreased
Vascularization		6.85E-12	-2.319	Decreased
Development of endothelial cells		6.58E-12	-2.020	Decreased

Table 1. Ingenuity pathway analysis of upstream regulators (A) and downstream biological functions (B). Both concordantly demonstrate a significant decrease in key angiogenic regulators such as *HIF1A*, *VEGFA*, *PDGF* or *ANGPT2* (A) and consequently angiogenic biological processes (B) in *IDH-1/2* mutant tumors. Full results are available in the data supplement (Supplementary Table 3).

leukemia⁹, T-cell lymphoma¹⁰, chondrosarcoma, enchondroma¹¹, and cholangiocarcinoma¹². The identification of *IDH* mutations in multiple cancers suggests that this pathway is involved in oncogenesis.

Mechanistically, *IDH* mutations induce a neomorphic enzyme activity converting α -ketoglutarate (α -*KG*) to (*R*)-2-hydroxyglutarate ((*R*)-*2HG*)¹³. One model for how mutant *IDH* may contribute to oncogenesis and the one that has perhaps gained the most traction is transformation by α -*KG* antagonism⁴⁸. (*R*)-*2HG* is structurally and chemically very similar to α -*KG* and it has been proposed that (*R*)-*2HG* competitively inhibits the function of α -*KG*-dependent dioxygenases, such as the JmjC domain-containing histone demethylases (*JmjC-KDMs*), which cause histone demethylation^{5,14,15}, and the ten-eleven translocation (*TET*) family of DNA hydroxylases, which cause DNA demethylation^{5,16} and are considered a major mechanism in the tumorigenesis of *IDH* mutant gliomas^{4,17}.

Beside these epigenetic modifications, (*R*)-*2HG* has also been shown to regulate the activity of α -*KG*-dependent dioxygenases, specifically *EGLN* prolyl 4-hydroxylases, that are responsible for targeting hypoxia-inducible factor 1- α (*HIF1A*) – a driving force in tumorigenesis in general and angiogenesis in particular¹⁸ – for ubiquitination by the von Hippel-Lindau (*VHL*) tumor suppressor and proteasomal degradation¹⁹. However, unlike the general assumption that (*R*)-*2HG* would competitively inhibit the activity of *EGLN* prolyl 4-hydroxylases and thus would lead to increased levels of *HIF1A*, it has on the contrary been shown that (*R*)-*2HG* acts as an activator rather than an inhibitor of *EGLN* prolyl 4-hydroxylases, ultimately leading to decreased levels of *HIF1A*^{20–22}. Although these results were initially surprising, it suggests that low levels of *HIF1A* suppress specific hallmarks of cancer required for aggressive behaviour (such as angiogenesis) in *IDH* mutant gliomas^{20,23} which fits with the indolent clinical course of these tumors^{6–8}.

The aim of the present study was to study the regulatory effects of *IDH-1/2* on *HIF1A* and related downstream signaling with mRNA expression and functional analysis and subsequent genotype / imaging phenotype correlation analysis to assess whether the observed molecular findings translate into distinct phenotypes, which can be detected non-invasively on MRI and thus would allow prediction of the *IDH* mutation status.

Results

IPA of upstream regulators revealed significant inhibition of *HIF1A* in *IDH-1/2* mutant tumors (Table 1a and Supplementary Table 3) and correspondingly increased expression of *EGLN* prolyl 4-hydroxylases – specifically *EGLN 1* and *EGLN3* which are the principal prolyl hydroxylases for degradation of *HIF1A*²⁴ – on a single-gene level (Supplementary Fig. 1). Moreover both IPA of upstream regulators and single-gene analysis (Table 1a and Supplementary Fig. 1) concordantly demonstrated significantly

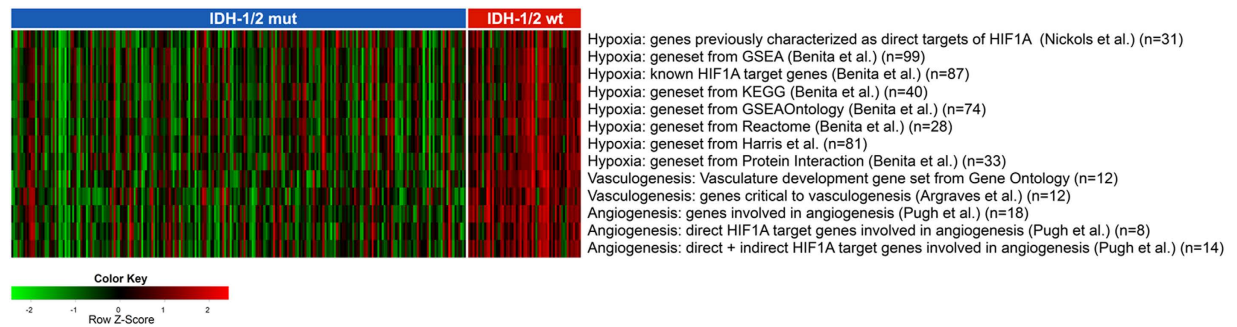


Figure 1. Gene set variation analysis (GSVA) of differentially activated gene sets identified inhibition of hypoxia, vasculo- and angiogenesis signaling pathways in *IDH-1/2* mutant tumors and activation in *IDH-1/2* wild-type tumors. Rows represent samples of 288 patients with low-grade diffuse or anaplastic gliomas from The Cancer Genome Atlas (TCGA). Columns represent GSVA enrichment scores for the individual gene set.

decreased expression of *HIF1A*-regulated pro-angiogenic key targets such as vascular endothelial growth factor A (*VEGFA*), angiopoietin-2 (*ANGPT2*) and platelet-derived growth factor A (*PDGFA*). We then studied the differential activity of *HIF1A* dependent pathways between *IDH-1/2* mutant and wild-type tumors using a novel method for assessing the enrichment of gene sets in individual samples called gene set variation analysis (GSVA)²⁵. This approach evaluates the enrichment of specific gene sets within the individual samples rather than on a group-level, which is a distinct advantage over gene set enrichment analysis. GSVA unveiled highly differential expression of *HIF1A* dependent gene sets, with inhibition of hypoxia-mediated signaling in general, and specifically vasculo- and angiogenesis in *IDH-1/2* mutant tumors (Fig. 1; empirical Bayes moderated-t p-values for individual gene sets are provided in Supplementary Table 2). These findings were further supported by the IPA downstream effects analysis, which demonstrated a significant inhibition of *HIF1A* mediated pro-angiogenic biological functions such as development, migration and movement of endothelial cells, development of blood vessel, vasculogenesis, angiogenesis, and (neo)vascularization in *IDH-1/2* mutant tumors (Table 1b and Supplementary Table 3).

To assess whether these differential genetic signatures between *IDH-1/2* mutant and wild-type tumors translate into distinct phenotypes, which can be detected non-invasively, rCBV imaging – a robust and clinically meaningful estimate of tumor angiogenesis^{26–28} – was analyzed from a local dataset in 73 treatment-naive patients with low-grade diffuse and anaplastic gliomas. Using a semi-automated radiogenomic imaging approach (see Methods) we demonstrated that *IDH-1/2* mutant and wild-type tumors are both associated with distinct imaging phenotypes, with *IDH-1/2* mutant tumors clustering at a significantly lower rCBV (median of the 50th percentile, 1.09; interquartile range, 0.80–1.47) as compared to their wild-type counterpart (median of the 50th percentile, 2.08; interquartile range, 1.49–2.57), suggesting indeed decreased angiogenesis in *IDH-1/2* mutant tumors as was predicted from the IPA downstream effects analysis of gene expression data (Fig. 2; representative cases are shown in Fig. 3). In detail, rCBV was significantly different between *IDH-1/2* mutant and wild-type tumors for all evaluated percentiles, with the 90th percentile yielding the highest z-score (4.89; $p < 0.01$) (Table 2). To quantify the predictive value of rCBV for determining *IDH-1/2* mutation status we analyzed the cumulative rCBV histogram distribution with cross-validated logistic-regression models. Thereby, the highest AUC was again obtained for the 90th percentile of the cumulative rCBV histogram distribution (92% (95% CI, 84–100%)) where a one-unit increase in rCBV corresponded to a decrease in the odds for presence of an *IDH-1/2* mutation by 69% and correctly predicted *IDH-1/2* mutation status in 88% of patients (positive predictive value (PPV): 89%, negative predictive value (NPV): 78% – detailed results are available in the Table 2).

Discussion

The recent discovery that genes encoding *IDH-1/2* are recurrently mutated in several cancers, which induce a neomorphic enzyme activity that results in the production of the oncometabolite (*R*)-2HG, unveiled a fascinating and complex biology behind the dysregulation and functional consequences of metabolites in cancers²⁹. However, the resulting biological effects of *IDH* mutation and (*R*)-2HG accumulation remain controversial, exemplified in the case of *HIF1A* signaling, a major oncogenic pathway in malignant glioma. While some studies demonstrated that *IDH* mutation increases *HIF1A* levels^{30,31}, several others reported opposite results^{20–22}: Koivunen *et al.* found *EGLN* activation in response to (*R*)-2HG accumulation, in turn leading to increased *HIF1A* degradation²⁰. More recently, many *HIF1A* target genes were shown to be lower expressed in *IDH* mutant gliomas³². In line with the latter reports, the results from the present study show that *IDH* mutant tumors are characterized by an increased expression of *EGLN* prolyl 4-hydroxylases that mark *HIF1A* for polyubiquitylation and proteasomal

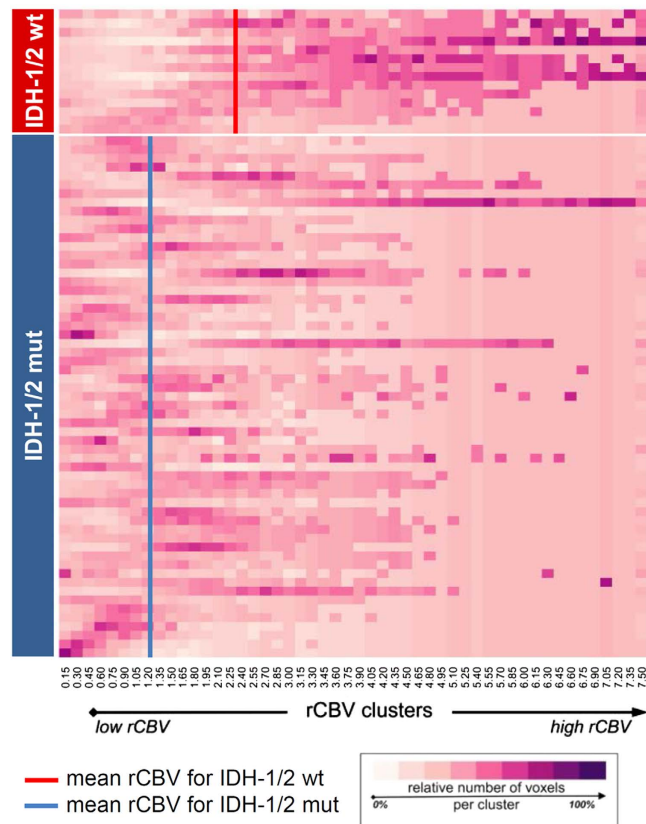


Figure 2. Relative cerebral blood volume (rCBV) imaging heat-map of 73 treatment-naïve patients with low-grade diffuse and anaplastic gliomas. The color of the voxel corresponds to the relative number of rCBV-voxels in each cluster and goes from white (low frequency) to purple (high frequency). Overall, *IDH-1/2* wild-type tumors (top of the heat-map) clustered at a significantly higher rCBV as compared to *IDH-1/2* mutant tumors (bottom of the heat-map) (see Table 2 for statistical results).

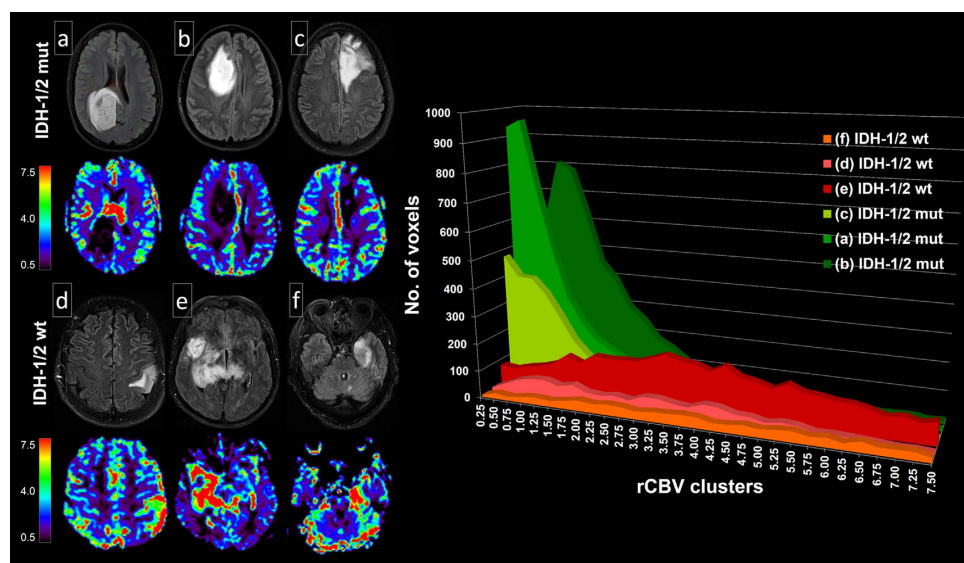


Figure 3. Pre-treatment MRI (FLAIR and corresponding rCBV images) of six representative patients with *IDH-1/2* mutant (a–c) and wild-type (d–f) gliomas. Histogram analysis demonstrates the distribution of rCBV-voxels, with *IDH-1/2* mutant tumors clustering at substantially lower values as compared to their wild-type counterpart.

Percentile	Mann-Whitney U test		Logistic regression							
	p-value	z-score	OR	(95% CI)	p-value	AUC	(95% CI)	Correctly classified	PPV	NPV
5	0.00	3.46	0.07	(0.01–0.94)	0.05	66.7%	(50.2%–83.2%)	82.2%	82.9%	66.7%
10	0.05	1.93	0.08	(0.01–0.55)	0.01	71.6%	(55.8%–87.3%)	83.6%	84.1%	75.0%
15	0.01	2.49	0.08	(0.01–0.43)	0.00	74.8%	(60.1%–89.6%)	82.2%	83.8%	60.0%
25	0.00	2.87	0.09	(0.02–0.41)	0.00	79.9%	(67.5%–92.3%)	82.2%	83.8%	60.0%
50	0.00	4.11	0.17	(0.04–0.76)	0.02	85.5%	(75.2%–95.8%)	83.6%	86.2%	62.5%
75	0.00	4.40	0.23	(0.06–0.88)	0.03	88.0%	(77.2%–98.9%)	86.3%	87.7%	75.0%
90	0.00	4.89	0.31	(0.13–0.78)	0.01	92.2%	(84.3%–100.0%)	87.7%	89.1%	77.8%
95	0.00	4.88	0.40	(0.22–0.75)	0.00	92.2%	(84.8%–99.7%)	86.3%	88.9%	70.0%
99	0.00	4.72	0.56	(0.42–0.76)	0.00	90.8%	(83.9%–97.7%)	82.2%	85.9%	55.6%

Table 2. rCBV histogram analysis for differentiating *IDH-1/2* mutant and wildtype tumors.

Abbreviations: AUC = Area under the curve; CI = confidence interval; NPV = negative predictive value; OR = Odds ratio; PPV = positive predictive value.

degradation, leading to decreased *HIF1A* activation and downstream inhibition of hypoxia, vasculo- and angiogenesis related signaling. These signaling pathways are a prerequisite for aggressive tumor behavior which is underscored by the relative indolent course of low-grade and anaplastic gliomas carrying *IDH* mutations, as compared to their wild-type counterpart which usually carry a dismal prognosis similar to those of glioblastoma³³. Most importantly, our semi-automatic radiogenomic imaging approach showed that these differential molecular signatures between *IDH* mutant and wild-type tumors translate into distinct phenotypes which are non-invasively predictable with rCBV imaging in a clinical setting. The prognostic value of rCBV imaging has already been shown before by Law *et al.*³⁴, who reported that lower rCBV translates into significantly prolonged time to progression in 189 glioma patients. While these authors did not account for *IDH*, it seems reasonable to assume that this finding indeed reflects *IDH* status, given that in their study the proportion of tumors with high rCBV considerably increases with tumor grade, as does the percentage of *IDH* wild type tumors in general³⁵.

Despite the straightforward results of the present study, we however have to acknowledge several limitations. First, differential mRNA expression and genotype/imaging phenotype analyses were performed in two independent cohorts (The Cancer Genome Atlas (TCGA) and local dataset), thus we were not able to directly define an mRNA expression correlate for the analyzed rCBV samples, and instead used the *IDH* mutation status as a connector between the TCGA and local dataset. Second, we were not able to determine whether decreased angiogenesis in *IDH* mutant tumors is solely a consequence of increased expression of *EGLN* prolyl 4-hydroxylases and subsequent decreased *HIF1A* activation or whether epigenetic modifications in *IDH* mutant tumors that result in reorganization of the methylome and gene expression may have also had implications on angiogenesis.

In conclusion (Fig. 4), these findings (1) show that *IDH* mutation status is associated with a distinct angiogenesis transcriptome signature which is non-invasively predictable with rCBV imaging and (2) highlight the potential future of radiogenomics (i.e. the correlation between cancer imaging and genomic features) towards a more accurate diagnostic workup of brain tumors.

Methods

Analysis of differential mRNA expression (TCGA dataset). RNA sequencing raw data (mapped to genes) and curated *IDH-1/2* mutation data were downloaded from TCGA data portal on October 15th, 2014. In total, RNA sequencing and curated mutation data was available for 288 unique samples with low-grade diffuse (WHO °II) or anaplastic (WHO °III) gliomas (detailed sample information is provided in Supplementary Table 1) which were then analyzed using Bioconductor 3.0³⁶, a package implemented in R 3.1.2 (R Foundation for Statistical Computing, Vienna, Austria)³⁷. First, normalization and differential gene expression analysis of RNA sequencing counts was performed using the edgeR package³⁸, which assumes a negative binomial distribution of count data, filtering lowly expressed transcripts.

To study relative pathway activity on the level of individual samples, we used the GSEA package²⁵. Using a nonparametric approach, GSEA transforms a gene-by-sample gene expression matrix into a gene set-by-sample gene set enrichment matrix, facilitating the identification of differentially activated gene-sets for each sample. GSEA was performed on 17 gene sets related to hypoxia, vasculo- and angiogenesis (a detailed listing is provided in Supplementary Table 2) identified through the Molecular Signatures Database (MSigDB - www.broadinstitute.org/gsea/msigdb)³⁹ and literature research. Next, empirical Bayes moderated t statistics⁴⁰ were calculated, and gene sets with $FDR-q < 0.05$ were considered to have

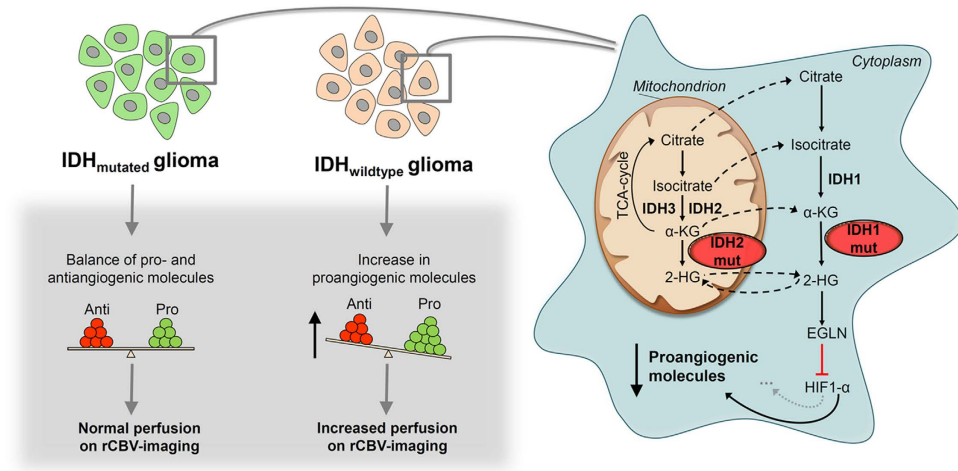


Figure 4. Synopsis of how *IDH* mutation status is linked to angiogenesis and alteration in rCBV on DSC-MRI in human glioma based on this hypothesis generating study. In brief, mutations in cancer-associated *IDH* acquire neoactivity producing 2-hydroxyglutarate (2HG). (R)-2HG potentiates *EglN* activity that mark the hypoxia inducible factor *HIF1A* for polyubiquitylation and proteasomal degradation, leading to decreased *HIF1A* activation in *IDH* mutant tumors, compared with their wild-type counterparts. This results in a distinct transcriptome signature induced by upregulation of hypoxia, vasculo- and angiogenesis related signaling pathways in *IDH* wild-type tumors, which is non-invasively detectable with rCBV imaging.

significantly differential activity between samples with mutant and wild-type *IDH-1/2* tumors. Of these gene sets, individual GSVA enrichment scores were plotted as a heatmap with the gplots package.

Furthermore, the differential upstream biological causes and probable downstream effects between mutant and wild-type *IDH-1/2* tumors were analyzed with the proprietary Ingenuity Pathway Analysis (IPA, QIAGEN, Redwood City, CA, USA) using a fold change filter of $|1.5|$ and $FDR-q < 0.05$. Briefly, the software calculates both an overlap p value (based on Fisher's exact test) and an activation z score, which is based on the expression state of activating and inhibiting genes, for manually curated upstream regulators and downstream biological functions. Only results with both an $FDR-q < 0.05$ and a z score $> |2|$ were considered significant.

Analysis of MRI data (local dataset). The local ethics committee of the University of Heidelberg approved retrospective data evaluation, and the requirement for patient informed consent was waived (ethics approval number: S-320/2012). Data evaluation was performed in accordance with relevant guidelines and regulations. Pre-treatment MRI scans of all adult patients (age ≥ 18 years) with newly diagnosed, pathologically confirmed low-grade diffuse (WHO grade II) or anaplastic (WHO grade III) gliomas in the period of July 2009 and April 2015 were screened. Out of these, dynamic susceptibility contrast-enhanced (DSC) and conventional MRI was available for 73 individual patients (detailed sample information is provided in Supplementary Table 1), which were then selected for subsequent analysis.

Images were acquired in the routine clinical workup using a 3 Tesla MR system (Magnetom Verio/Trio TIM, Siemens Healthcare, Erlangen, Germany) with a 12-channel head-matrix coil. Acquisition of the DSC-MRI sequence was performed as described previously⁴¹. In brief, prior dynamic imaging, a 0.1 mmol/kg prebolus dose of gadoterate meglumine (Gd-DOTA, DOTAREM, Guerbet, France) was administered to diminish T1 effects that might result from agent extravasation. DSC-PWI was obtained with a T2*-weighted gradient-echo EPI sequence during the bolus injection of a standard dose (0.1 mmol/kg) of intravenous gadoterate meglumine. Twenty-six to 28 slices with a thickness of 5 mm were acquired with spectral fat suppression (TE = 36 ms, TR = 2220 ms, FA = 90°, field of view = 240 mm \times 240 mm, image matrix = 128 \times 128). In total, 50 to 75 dynamic measurements were performed. Fluid attenuated inversion recovery (FLAIR) images were acquired with the following parameters: TI = 2400 ms; TE = 85 ms; TR = 8500 ms; section thickness, 5 mm; interslice gap, 5%.

Post-processing of DSC-MRI and FLAIR data was performed with dedicated software (Olea Sphere v 2.3, Olea Medical, La Ciotat, France). First, a rigid-body registration was applied to the DSC-MRI data to correct for motion artifacts. An arterial-input function (AIF) was determined automatically using cluster analysis techniques⁴² and deconvolution of the AIF was performed using a time-insensitive block-circulant singular value decomposition (cSVD)⁴³. Whole-brain relative CBV (rCBV) maps were generated by using an established tracer kinetic model applied to the first-pass data, with rCBV values computed pixel-by-pixel as the area under the concentration time curve (AUC) divided by the AUC of the AIF⁴⁴. Mathematical correction of the contrast agent leakage from the intravascular to extracellular

space was performed with the method suggested by Boxerman *et al.*⁴⁵. Next, the FLAIR-hyperintense tumor was outlined according to a semi-automated region-growing segmentation method, which examines neighboring voxels of an initial seed point/voxel and determines whether the voxel neighbors should be added to the ROI. Automatic iteration of this process was performed on each slice of the FLAIR-images until the hyperintense FLAIR abnormality (excluding those resulting from obvious leukariosis) was included in the ROI. Automatic co-registration of rCBV maps with corresponding FLAIR images which included the previously segmented FLAIR ROIs was performed prior voxel-wise extraction of rCBV values from the segmented tumor. The extracted rCBV voxel values from individual patients were then distributed into 50 equally spaced clusters (width of 0.15) for rCBV-values in the range of 0.0 to 7.5. Finally, the relative number of rCBV-voxels in each cluster were plotted in R as a heatmap with the *gplots* package. Separate extraction and analysis of rCBV voxels from the contrast-enhancing tumor parts was not performed since this was only present in a small minority of patients included in the present study.

The rCBV histogram distribution was further analyzed to evaluate whether rCBV is different between patients *IDH-1/2* mutant and wild-type tumors. We evaluated the significance of several percentiles (5th, 10th, 25th, 50th, 75th, 90th, 95th, 99th) from the rCBV histogram distribution with a Mann-Whitney U test. Furthermore, leave-one-out cross-validated logistic regression analysis was performed to assess the significance of each rCBV percentile for predicting *IDH-1/2* mutation status (using a cut-off of the predicted probability of 0.5). P-values < 0.05 were considered significant.

***IDH* mutation status assessment (local dataset).** *IDH-1/2* mutation screening was performed for all evaluated patients (n=73) with immunohistochemistry (IHC) for *IDH1-R132H* and DNA sequencing for IHC-negative cases. Tissue was provided by the Department of Neuropathology, Institute of Pathology, University of Heidelberg Medical Center, Germany in accordance with local ethical approval. All experiments were performed in accordance with relevant guidelines and regulations.

IHC of formalin-fixed paraffin-embedded tumor tissue for *IDH1-R132H* was performed as described previously⁴⁶. In brief, sections cut to 3 μm were incubated and processed on a Ventana BenchMark XT[®] immunostainer (Ventana Medical Systems, Tucson, AZ, USA). Antibodies were anti-human *IDH1-R132H* (H09, Dianova, Hamburg, Germany) The Ventana staining procedure included pretreatment with cell conditioner 2 (pH 6) for 60 min, followed by incubation with primary antibody at 37°C for 32 min. Incubation was followed by Ventana standard signal amplification, UltraWash, counterstaining with one drop of hematoxylin for 4 min and one drop of bluing reagent for 4 min. For visualization, ultraView[™] Universal DAB Detection Kit (Ventana Medical Systems) was used. *IDH1-R132H* staining was evaluated as described previously⁴⁷.

DNA sequencing for IHC-negative cases was performed as described previously¹. In brief, DNA-extraction from paraffin-embedded tumor was performed tissue using the DNeasy blood and tissue kit (Qiagen, Hilden, Germany). A fragment of 129-bp length spanning the catalytic domain of *IDH1* including codon 132 was amplified using sense primer *IDH1f* CGGTCTTCAGAGAAGCCATT and anti-sense primer *IDH1r* GCAAATCACATTATTGCCAAC, and a fragment of 150bp length spanning the sequence encoding the catalytic domain of *IDH2* including codon 172 was amplified using the sense primer *IDH2f* AGCCCATCATCTGCAAAAAC and antisense primer *IDH2r* CTAGGCGAGGAGCTCCAGT. Sequences were determined using a semiautomated sequencer (ABI 3100 Genetic Analyzer, Applied Biosystems, Foster City, CA) and the Sequence Pilot version 3.1 (JSI-Medisys, Kippenheim, Germany).

References

- Hartmann, C. *et al.* Type and frequency of *IDH1* and *IDH2* mutations are related to astrocytic and oligodendroglial differentiation and age: a study of 1,010 diffuse gliomas. *Acta Neuropathol* **118**, 469–474, doi: 10.1007/s00401-009-0561-9 (2009).
- Nobusawa, S., Watanabe, T., Kleihues, P. & Ohgaki, H. *IDH1* mutations as molecular signature and predictive factor of secondary glioblastomas. *Clin Cancer Res* **15**, 6002–6007, doi: 10.1158/1078-0432.CCR-09-0715 (2009).
- Lai, A. *et al.* Evidence for sequenced molecular evolution of *IDH1* mutant glioblastoma from a distinct cell of origin. *J Clin Oncol* **29**, 4482–4490, doi: 10.1200/JCO.2010.33.8715 (2011).
- Turcan, S. *et al.* *IDH1* mutation is sufficient to establish the glioma hypermethylator phenotype. *Nature* **483**, 479–483, doi: 10.1038/nature10866 (2012).
- Xu, W. *et al.* Oncometabolite 2-hydroxyglutarate is a competitive inhibitor of alpha-ketoglutarate-dependent dioxygenases. *Cancer Cell* **19**, 17–30, doi: 10.1016/j.ccr.2010.12.014 (2011).
- Hartmann, C. *et al.* Patients with *IDH1* wild type anaplastic astrocytomas exhibit worse prognosis than *IDH1*-mutated glioblastomas, and *IDH1* mutation status accounts for the unfavorable prognostic effect of higher age: implications for classification of gliomas. *Acta Neuropathol* **120**, 707–718, doi: 10.1007/s00401-010-0781-z (2010).
- Wick, W. *et al.* NOA-04 randomized phase III trial of sequential radiochemotherapy of anaplastic glioma with procarbazine, lomustine, and vincristine or temozolomide. *J Clin Oncol* **27**, 5874–5880 (2009).
- Leu, S. *et al.* *IDH/MGMT*-driven molecular classification of low-grade glioma is a strong predictor for long-term survival. *Neuro Oncol* **15**, 469–479, doi: 10.1093/neuonc/nos317 (2013).
- Mardis, E. R. *et al.* Recurring mutations found by sequencing an acute myeloid leukemia genome. *N Engl J Med* **361**, 1058–1066, doi: 10.1056/NEJMoa0903840 (2009).
- Cairns, R. A. *et al.* *IDH2* mutations are frequent in angioimmunoblastic T-cell lymphoma. *Blood* **119**, 1901–1903, doi: 10.1182/blood-2011-11-391748 (2012).
- Amary, M. F. *et al.* *IDH1* and *IDH2* mutations are frequent events in central chondrosarcoma and central and periosteal chondromas but not in other mesenchymal tumours. *J Pathol* **224**, 334–343, doi: 10.1002/path.2913 (2011).
- Wang, P. *et al.* Mutations in isocitrate dehydrogenase 1 and 2 occur frequently in intrahepatic cholangiocarcinomas and share hypermethylation targets with glioblastomas. *Oncogene* **32**, 3091–3100, doi: 10.1038/onc.2012.315 (2013).

13. Dang, L. *et al.* Cancer-associated *IDH1* mutations produce 2-hydroxyglutarate. *Nature* **462**, 739–744, doi: 10.1038/nature08617 (2009).
14. Chowdhury, R. *et al.* The oncometabolite 2-hydroxyglutarate inhibits histone lysine demethylases. *EMBO reports* **12**, 463–469, doi: 10.1038/embor.2011.43 (2011).
15. Lu, C. *et al.* *IDH* mutation impairs histone demethylation and results in a block to cell differentiation. *Nature* **483**, 474–478, doi: 10.1038/nature10860 (2012).
16. Figueroa, M. E. *et al.* Leukemic *IDH1* and *IDH2* mutations result in a hypermethylation phenotype, disrupt TET2 function, and impair hematopoietic differentiation. *Cancer Cell* **18**, 553–567, doi: 10.1016/j.ccr.2010.11.015 (2010).
17. Oermann, E. K., Wu, J., Guan, K. L. & Xiong, Y. Alterations of metabolic genes and metabolites in cancer. *Semin Cell Dev Biol* **23**, 370–380, doi: 10.1016/j.semcdb.2012.01.013 (2012).
18. Rohwer, N., Zasada, C., Kempa, S. & Cramer, T. The growing complexity of HIF-1 α 's role in tumorigenesis: DNA repair and beyond. *Oncogene* **32**, 3569–3576, doi: 10.1038/onc.2012.510 (2013).
19. Maxwell, P. H. *et al.* The tumour suppressor protein VHL targets hypoxia-inducible factors for oxygen-dependent proteolysis. *Nature* **399**, 271–275, doi: 10.1038/20459 (1999).
20. Koivunen, P. *et al.* Transformation by the (R)-enantiomer of 2-hydroxyglutarate linked to EGLN activation. *Nature* **483**, 484–488, doi: 10.1038/nature10898 (2012).
21. Losman, J. A. *et al.* (R)-2-hydroxyglutarate is sufficient to promote leukemogenesis and its effects are reversible. *Science* **339**, 1621–1625, doi: 10.1126/science.1231677 (2013).
22. Ye, D., Ma, S., Xiong, Y. & Guan, K. L. R-2-hydroxyglutarate as the key effector of *IDH* mutations promoting oncogenesis. *Cancer Cell* **23**, 274–276, doi: 10.1016/j.ccr.2013.03.005 (2013).
23. Schulze, A. & Harris, A. L. How cancer metabolism is tuned for proliferation and vulnerable to disruption. *Nature* **491**, 364–373, doi: 10.1038/nature11706 (2012).
24. del Peso, L. *et al.* The von Hippel Lindau/hypoxia-inducible factor (HIF) pathway regulates the transcription of the HIF-proline hydroxylase genes in response to low oxygen. *J Biol Chem* **278**, 48690–48695, doi: 10.1074/jbc.M308862200 (2003).
25. Hanzelmann, S., Castelo, R. & Guinney, J. GSEA: gene set variation analysis for microarray and RNA-seq data. *BMC bioinformatics* **14**, 7, doi: 10.1186/1471-2105-14-7 (2013).
26. Maia, A. C., Jr. *et al.* MR cerebral blood volume maps correlated with vascular endothelial growth factor expression and tumor grade in nonenhancing gliomas. *AJNR Am J Neuroradiol* **26**, 777–783 (2005).
27. Ginat, D. T., Mangla, R., Yeaney, G., Schaefer, P. W. & Wang, H. Correlation between dynamic contrast-enhanced perfusion MRI relative cerebral blood volume and vascular endothelial growth factor expression in meningiomas. *Acad radiol* **19**, 986–990, doi: 10.1016/j.acra.2012.04.006 (2012).
28. Jain, R. *et al.* Correlation of perfusion parameters with genes related to angiogenesis regulation in glioblastoma: a feasibility study. *AJNR Am J Neuroradiol* **33**, 1343–1348, doi: 10.3174/ajnr.A2956 (2012).
29. Cairns, R. A. & Mak, T. W. Oncogenic isocitrate dehydrogenase mutations: mechanisms, models, and clinical opportunities. *Cancer discovery* **3**, 730–741, doi: 10.1158/2159-8290.CD-13-0083 (2013).
30. Zhao, S. *et al.* Glioma-derived mutations in *IDH1* dominantly inhibit *IDH1* catalytic activity and induce HIF-1 α . *Science* **324**, 261–265, doi: 10.1126/science.1170944 (2009).
31. Fu, Y. *et al.* Glioma derived isocitrate dehydrogenase-2 mutations induced up-regulation of HIF-1 α and beta-catenin signaling: possible impact on glioma cell metastasis and chemo-resistance. *Int J Biochem Cell Biol* **44**, 770–775, doi: 10.1016/j.biocel.2012.01.017 (2012).
32. Chesnelong, C. *et al.* Lactate dehydrogenase A silencing in *IDH* mutant gliomas. *Neuro Oncol* **16**, 686–695, doi: 10.1093/neuonc/not243 (2014).
33. Cancer Genome Atlas Research, N. *et al.* Comprehensive, Integrative Genomic Analysis of Diffuse Lower-Grade Gliomas. *N Engl J Med* **372**, 2481–2498, doi: 10.1056/NEJMoa1402121 (2015).
34. Law, M. *et al.* Gliomas: predicting time to progression or survival with cerebral blood volume measurements at dynamic susceptibility-weighted contrast-enhanced perfusion MR imaging. *Radiology* **247**, 490–498, doi: 10.1148/radiol.2472070898 (2008).
35. Yan, H. *et al.* *IDH1* and *IDH2* mutations in gliomas. *N Engl J Med* **360**, 765–773, doi: 10.1056/NEJMoa0808710 (2009).
36. Gentleman, R. C. *et al.* Bioconductor: open software development for computational biology and bioinformatics. *Genome Biol* **5**, R80, doi: 10.1186/gb-2004-5-10-r80 (2004).
37. R: A Language and Environment for Statistical Computing (R Foundation for Statistical Computing, Vienna, Austria, 2014).
38. Robinson, M. D., McCarthy, D. J. & Smyth, G. K. edgeR: a Bioconductor package for differential expression analysis of digital gene expression data. *Bioinformatics* **26**, 139–140, doi: 10.1093/bioinformatics/btp616 (2010).
39. Subramanian, A. *et al.* Gene set enrichment analysis: a knowledge-based approach for interpreting genome-wide expression profiles. *Proc Natl Acad Sci USA* **102**, 15545–15550, doi: 10.1073/pnas.0506580102 (2005).
40. Smyth, G. K. Linear models and empirical bayes methods for assessing differential expression in microarray experiments. *Stat. Appl. Genet. Molec. Biol.* **3**, Article3, doi: 10.2202/1544-6115.1027 (2004).
41. Kickingreder, P. *et al.* Relative cerebral blood volume is a potential predictive imaging biomarker of bevacizumab efficacy in recurrent glioblastoma. *Neuro Oncol.*, 2015 Aug; **17**(8): 1139–47. doi: 10.1093/neuonc/nov028. Epub 2015 Mar 9. (<http://www.ncbi.nlm.nih.gov/pubmed/25754089>)
42. Mouridsen, K., Christensen, S., Gyldensted, L. & Ostergaard, L. Automatic selection of arterial input function using cluster analysis. *Magn Reson Med* **55**, 524–531, doi: 10.1002/mrm.20759 (2006).
43. Wu, O. *et al.* Tracer arrival timing-insensitive technique for estimating flow in MR perfusion-weighted imaging using singular value decomposition with a block-circulant deconvolution matrix. *Magn Reson Med* **50**, 164–174, doi: 10.1002/mrm.10522 (2003).
44. Ostergaard, L., Weisskoff, R. M., Chesler, D. A., Gyldensted, C. & Rosen, B. R. High resolution measurement of cerebral blood flow using intravascular tracer bolus passages. Part I: Mathematical approach and statistical analysis. *Magn Reson Med* **36**, 715–725 (1996).
45. Boxerman, J., Schmainda, K. & Weisskoff, R. Relative cerebral blood volume maps corrected for contrast agent extravasation significantly correlate with glioma tumor grade, whereas uncorrected maps do not. *AJNR Am J Neuroradiol* **27**, 859–867 (2006).
46. Sahm, F. *et al.* Farewell to oligoastrocytoma: in situ molecular genetics favor classification as either oligodendroglioma or astrocytoma. *Acta Neuropathol* **128**, 551–559, doi: 10.1007/s00401-014-1326-7 (2014).
47. Capper, D. *et al.* Application of mutant *IDH1* antibody to differentiate diffuse glioma from nonneoplastic central nervous system lesions and therapy-induced changes. *Am J Surg Pathol* **34**, 1199–1204, doi: 10.1097/PAS.0b013e3181e7740d (2010).
48. Losman, J. A. & Kaelin, W. G. What a difference a hydroxyl makes: mutant *IDH*, (R)-2-hydroxyglutarate, and cancer. *Genes Dev* **2013** Apr 15; **27**(8): 836–852. <http://www.ncbi.nlm.nih.gov/pmc/articles/PMC3650222/>.

Acknowledgements

The results published here are in part based upon data generated by the TCGA Research Network: <http://cancergenome.nih.gov>. PK is a fellow of the Medical Faculty Heidelberg Postdoc-Program. FS is a fellow of the Medical Faculty Heidelberg Postdoc-Program.

Author Contributions

P.K. designed the overall study, P.K. and B.W. performed analysis of the TCGA dataset, P.K. and A.R. performed analysis of the local MRI. dataset, F.S. and A.v.D. performed IDH mutation status assessment of the local dataset, P.K. performed statistical analysis, P.K. and B.W. wrote large parts of the manuscript, A.R., F.S., A.v.D., S.H., W.W. and M.B. contributed to the manuscript.

Additional Information

Supplementary information accompanies this paper at <http://www.nature.com/srep>

Competing financial interests: The authors declare no competing financial interests.

How to cite this article: Kickingeder, P. *et al.* IDH mutation status is associated with a distinct hypoxia/angiogenesis transcriptome signature which is non-invasively predictable with rCBV imaging in human glioma. *Sci. Rep.* 5, 16238; doi: 10.1038/srep16238 (2015).



This work is licensed under a Creative Commons Attribution 4.0 International License. The images or other third party material in this article are included in the article's Creative Commons license, unless indicated otherwise in the credit line; if the material is not included under the Creative Commons license, users will need to obtain permission from the license holder to reproduce the material. To view a copy of this license, visit <http://creativecommons.org/licenses/by/4.0/>