

Optimal Behavior Planning for Autonomous Driving: A Generic Mixed-Integer Formulation

Klemens Esterle^{1*}, Tobias Kessler^{1*} and Alois Knoll²

Abstract—Mixed-Integer Quadratic Programming (MIQP) has been identified as a suitable approach for finding an optimal solution to the behavior planning problem with low runtimes. Logical constraints and continuous equations are optimized alongside. However, it has only been formulated for a straight road, omitting common situations such as taking turns at intersections. This has prevented the model from being used in reality so far. Based on a triple integrator model formulation, we compute the orientation of the vehicle and model it in a disjunctive manner. That allows us to formulate linear constraints to account for the non-holonomy and collision avoidance. These constraints are approximations, for which we introduce the theory. We show the applicability in two benchmark scenarios and prove the feasibility by solving the same models using nonlinear optimization. This new model will allow researchers to leverage the benefits of MIQP, such as logical constraints, or global optimality.

I. INTRODUCTION

The scope of a behavior planning component for autonomous driving is calculating a plan to safely navigate through traffic reaching a desired state. This plan is usually defined as a sequence of future states or waypoints, which is then passed to a trajectory tracking controller. If those points cannot be followed, because they do not account for the non-holonomy of the vehicle, safety is at risk and eventually collision can occur.

Optimization-based methods incorporate a model of the kinematics, which is propagated for a given planning time horizon, and usually formulate constraints to account for feasibility and safety while constructing a cost function to account for comfort and other desired aspects. Although local continuous optimization such as sequential quadratic programming (SQP) has been applied in reality [1], mixed-integer programming (MIP) offers multiple benefits that are favorable for optimal behavior planning. First, MIP will yield an optimal solution, whereas SQP only guarantees yielding a local optimum. Secondly, it allows logical and integer constraints to be incorporated, whereas they usually lead to numerical issues with continuous solvers. MIP cannot use a non-linear vehicle model, such as the bicycle model, as the resulting optimization problem is hard to solve. Past studies used second- or third-order integrators to mitigate that [2, 3].

However, the proposed methods can only be used on a small subset, namely straight roads, and become invalid in

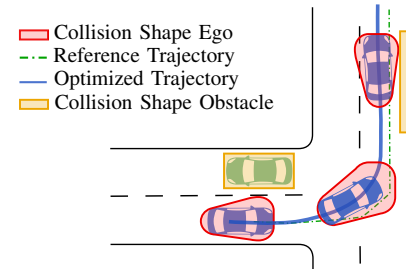


Fig. 1: Overview of our approach. From an arbitrary environment shape and a non-trackable reference trajectory, we compute an optimal motion. By over-approximating the collision shape of the vehicle with adapted constraints for different orientations, our model is globally valid and avoids arbitrary obstacles.

any other environment (roundabouts, intersections), or even during obstacle avoidance at low speeds, as the valid scope of the model formulation is limited. This poses the question of how to formulate a generic globally valid linearized model with correct vehicle dynamics in a MIP framework as sketched in Fig. 1.

We contribute a model applicable to the full-fledged range of orientations for the vehicle, featuring

- linear over-approximating collision constraints,
- linear non-holonomy constraints of the vehicle,
- the methodology to compute all model parameters by linear least-square fits and
- a detailed study of the feasibility of the model.

II. RELATED WORK

Ziegler *et al.* [1] proposed an optimal control problem, where they apply the cost functionals and constraints shown in Table I. They use a triple integrator as vehicle model, while bounding the curvature to account for non-holonomy. The Bertha-Benz drive showed the applicability of the triple integrator model if correctly constrained. Their approach yields a non-linear optimization problem, which is solved using SQP but only finds a local optimum. Motivated by that, approaches for maneuver planning [4, 5] have focused on finding the correct maneuver in a preliminary step. However, these approaches usually rely on a geometric partitioning of the workspace and thus scale poorly, and cannot be extended to account for any interactive or cooperative planning.

Nilsson *et al.* [6] introduce two quadratic problems (QP) for longitudinal and lateral control based on a linear double-integrator model. To account for non-holonomy, the authors use a linear inequality constraint that couples lateral and longitudinal velocity. However, this is only valid for small yaw

*These authors contributed equally to this work.

¹with fortiss GmbH, Research Institute of the Free State of Bavaria, Munich, Germany

²with Chair of Robotics, Artificial Intelligence and Real-time Systems, Technical University of Munich, Munich, Germany

TABLE I: Comparison of model approaches. We express linear functionals using ①, quadratic using ②, and all other non-linear functionals using ③. The counterparts ①, ②, and ③ express functionals that are not (and cannot be) implemented. We compare cost functionals that we assume to be desirable, mostly following [1]. j_{\square} denote the cost terms, κ the curvature, v the velocity, and a the acceleration.

Source	Ziegler <i>et al.</i> [1]	Gutjahr <i>et al.</i> [7]	Nilsson <i>et al.</i> [6]	Qian <i>et al.</i> [3]	Frese and Beyerer [2]
Problem formulation	SQP	QP for long, lat each	QP for long, lat each	MIQP	MILP
Model	triple integrator	Frenet bicycle model	double integrator	double integrator	double integrator
Reference frame	Cartesian, fixed	Frenet, streetwise	Cartesian, fixed	Cartesian, fixed	Cartesian, fixed
Non-Holonomy Constraint	κ , ③	κ , ①	v_x, v_y are coupled, ①	v_x, v_y are coupled, ①	a_{lat} , ①
Acceleration Constraint $ a $	②	①	③	③	approximated, ①
Collision Shape	disks	disks	road-aligned rectangle	road-aligned rectangle	road-aligned rectangle
Collision Check to	everything	everything	road-aligned rectangle	road-aligned convex polygon	non-convex road polygon
Collision Constraint	③	①	①	①	①
$j_{velocity}$	③	②	③	③	③
$j_{acceleration}$	②	②	②	②	①, ②
j_{jerk}	②	②	②	②, see [11]	②
$j_{yawrate}$	③	② using κ^{-1}	③	③	③
$j_{reference}$	③	②	③	③	③
Validity	any road / orientation	any road / orientation	no	straight road, aligned with road (orientation-wise)	
Multi-Agent	no	no	no	yes, see [11]	yes

angles and will yield non-drivable trajectories at intersections and roundabouts for example, since the road curvature is not taken into account.

Gutjahr *et al.* [7] introduce two longitudinal and lateral QP in the Frenet frame based on the bicycle model. The model yields good results for driving in static environments. Similar to Ziegler *et al.* [1], this approach relies on a maneuver selection, as shown by Esterle *et al.* [8]. However, the transformation of all obstacles to local coordinates is costly and with an increasing number of obstacles outweighs the benefits of the fast QP.

Miller *et al.* [9] base their work on [7] and formulate two consecutive longitudinal and lateral programs using mixed-integer quadratic programming (MIQP) similar to [6], but in local street-wise coordinates instead. However, the approach cannot account for any model-based prediction or multi-agent planning. Also separating longitudinal and lateral control yields sub-optimal solutions and limits the solution space.

Frese and Beyerer [2] propose a double integrator based Mixed Integer Linear Programming formulation, leveraging its capability of yielding an optimal solution. That comes with the fact that both only linear constraints and objective functions can be formulated. We thus analyzed the formulations in Table I in terms of linear functionals ①, quadratic ②, and non-linear functionals ③. The non-holonomy is assured by bounding an approximation of the lateral acceleration. However, that is only valid for small yaw angles, and yields a lot of invalid solutions [10]. The collision checks are modeled with an arbitrary road polygon using a disjunctive collision check with convex polygons. They also propose to check for collision using rectangle-based vehicle-approximation of consecutive states, with each variant introducing a lot of invalid trajectories [10].

Qian *et al.* [3] apply the double integrator to MIQP. Similar to Nilsson *et al.* [6], they model the non-holonomy by bounding the lateral velocity, which is only valid for straight roads and if the vehicle is road-oriented. Even when avoiding an obstacle, the yaw angle may exceed 20 degrees, which can yield bends in the optimized trajectories that cannot

be executed with a real vehicle. The work is thus limited to straight roads and straight driving, whereas turning at intersections is not possible. With the quadratic cost function of a MIQP, differences to longitudinal or lateral values (such as acceleration) are only possible if the reference signal is zero (such as for acceleration). Thus, deviations from the absolute velocity cannot be expressed. Burger and Lauer [11] extend the work of Qian *et al.* [3] to the cooperative setting by extending the state space to multiple agents. However, also the limitations of the formulation are inherited.

Kessler and Knoll [12] formulate an MIP to select an optimal cooperative behavior for a set of agents. Instead of relying on a model within the optimization, they use motion primitives, which makes it applicable in arbitrary environments. However, with a narrow discretization, the optimization problem becomes large.

To summarize, no method currently exists to apply the advantages of MIP (global solution, logical constraints) to generic environments.

III. REGION-BASED LINEARIZATION APPROACH

Following Qian *et al.* [3], we model the vehicle as a third-order point-mass system with positions $p_x(t)$, $p_y(t)$, velocities $v_x(t)$, $v_y(t)$, and accelerations $a_x(t)$, $a_y(t)$ as states. Jerk in both directions $j_x(t)$ and $j_y(t)$ are inputs of the model. As we aim to formulate the vehicle model as linear constraints, all non-linearities have to be eliminated. In the following, we will introduce how we guarantee the validity of the model for all orientations and perform collision checks.

A. Discretized and Disjunctive Modeling of the Orientation

Although the vehicle's orientation θ is not part of the state space, we will need it for a sufficient collision check in Cartesian coordinates within the optimization problem. We assume perfect traction and therefore neglect vehicle and tire slip. It can be calculated using $\theta = \text{atan}(v_y/v_x)$. However, this equation is non-linear, as are the trigonometric operations

$$\sin(\theta) = \sin(\text{atan}(v_y/v_x)) \quad (1a)$$

$$\cos(\theta) = \cos(\text{atan}(v_y/v_x)) \quad (1b)$$

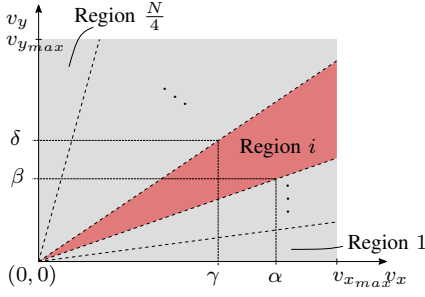


Fig. 2: Construction of region i described through two lines $(0, 0) - (\alpha, \beta)$ and $(0, 0) - (\gamma, \delta)$ following Eq. (2)

are necessary to calculate the front axle position. To formulate collision constraints, we thus need to linearize Eq. (1). For our model to be valid for orientations $\theta \in [0, 2\pi]$, we discretize the orientation by introducing *regions* in the (v_x, v_y) plane, see Fig. 2. The regions are defined by the area between two line segments starting at the origin. Consequently, for every (v_x, v_y) point within a region i , the following inequalities hold with region-dependent line parameters:

$$\alpha v_y \geq \beta v_x \quad (2a)$$

$$\gamma v_y \leq \delta v_x \quad (2b)$$

Having done this, we will subsequently formulate model equations that are valid in each region with different parameters. These are listed in Table II.

For driving comfort reasons, most motion planners limit the maximum longitudinal and lateral acceleration, deceleration, and jerk. From these desired values in the driving direction of the vehicle, we compute region-specific bounds in global x, y coordinates. This is done by rotating the original longitudinal and lateral limits along with the vehicle orientation. As the orientation angle, we chose the mean angle of the respective region. This ensures that we comply with the original bounds in driving direction in terms of absolute values and directions.

TABLE II: parameters from fitting or preprocessing used throughout this paper. Region dependency is denoted by r .

Parameter	Description
α^r	x value of region r lower region borderline
β^r	y value of region r lower region borderline
γ^r	x value of region r upper region borderline
δ^r	y value of region r upper region borderline
$\overline{\mathcal{P}}_{\cos}^r$	polynome linear in v_x, v_y upper-bounding $\cos(\theta)$
$\underline{\mathcal{P}}_{\cos}^r$	polynome linear in v_x, v_y lower-bounding $\cos(\theta)$
$\overline{\mathcal{P}}_{\sin}^r$	polynome linear in v_x, v_y upper-bounding $\sin(\theta)$
$\underline{\mathcal{P}}_{\sin}^r$	polynome linear in v_x, v_y lower-bounding $\sin(\theta)$
$\overline{\mathcal{P}}_{\kappa}^r$	polynome linear in v_x, v_y lower-bounding the κ
$\underline{\mathcal{P}}_{\kappa}^r$	polynome linear in v_x, v_y upper-bounding the κ
$\overline{u}_x^r, \underline{u}_x^r$	lower and upper jerk limit in direction x
$\overline{u}_y^r, \underline{u}_y^r$	lower and upper jerk limit in direction y
$\overline{a}_x^r, \underline{a}_x^r$	lower and upper acceleration limit in direction x
$\overline{a}_y^r, \underline{a}_y^r$	lower and upper acceleration limit in direction y
ϱ^r	the region r is allowed for the current scenario

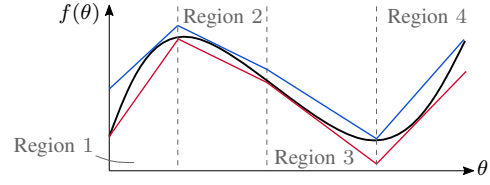


Fig. 3: Exemplary non-linear function and the respective piecewise linear upper and lower bounds.

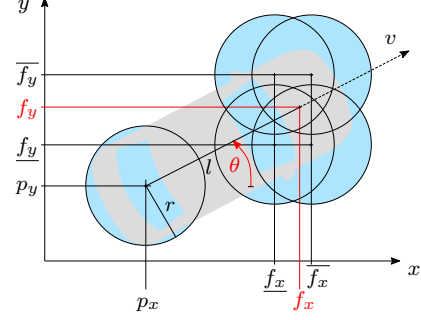


Fig. 4: Vehicle model with wheelbase l and disk-based collision-shape of radius r . The variables in red are unavailable in the MIQP model formulation. The orientation θ is defined clockwise.

B. Over-Approximating the Collision Shape

If the orientation is known, a common strategy to approximate the vehicle shape is by using three circles with radius r for the rear axle, middle position, and front axle similar to [1], as this allows for efficient collision checking to arbitrary polygons. We aim for a linear vehicle model, so the true (highly non-linear) orientation is unknown. As we only have an approximated orientation but do not want to underestimate any collisions, we choose to compute the upper and lower bound of the sine and cosine of the orientation. Fig. 3 illustrates this idea. With that and the vehicle's wheelbase l , we then calculate upper and lower bounds for the x and y position of the front axle.

$$\overline{f}_x := p_x + l \overline{\cos(\theta)} \quad (3a)$$

$$\underline{f}_x := p_x + l \underline{\cos(\theta)} \quad (3b)$$

$$\overline{f}_y := p_y + l \overline{\sin(\theta)} \quad (3c)$$

$$\underline{f}_y := p_y + l \underline{\sin(\theta)} \quad (3d)$$

Permuting $\overline{f}_x, \underline{f}_x$ with $\overline{f}_y, \underline{f}_y$ yields four circles for the front axle, which represent an over-approximation of the true front axle circle, as shown in Fig. 4. For now, we chose to not model the middle point of the vehicle, as this increases the complexity of the model. However, a similar approach can be applied to the mid axle. We now present two methods for obtaining bounds for the sine and cosine.

1) *Constant Approximation:* We propose a constant approximation of the sine using the maximum and minimum orientation for each region.

$$\overline{\sin(\theta)} \cong \max[\sin(\text{atan}(\delta^r, \gamma^r)), \sin(\text{atan}(\beta^r, \alpha^r))] \quad (4a)$$

$$\underline{\sin(\theta)} \cong \min[\sin(\text{atan}(\delta^r, \gamma^r)), \sin(\text{atan}(\beta^r, \alpha^r))] \quad (4b)$$

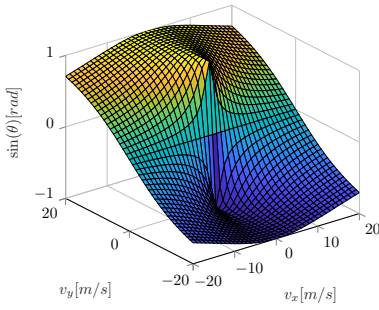


Fig. 5: Plot of $\sin(\theta) = \sin(\text{atan}(v_y/v_x))$ with respect to v_x and v_y . The function is obviously highly non-linear but can be approximated in a piecewise linear fashion.

The cosine is calculated accordingly. With a higher number of regions, the error for this type of approximation will decrease. Note that this is only valid as long as a region is not defined over multiple quadrants, since sine and cosine are only monotonic functions within a quadrant.

2) *Velocity-Dependent Approximation*: To preserve the linearity of the constraints, only a linear combination of the state variables can be computed. We chose to upper bound the $\sin(\theta)$ term by a first order polynomial depending on region r with three parameters p_{\square}

$$\overline{\sin(\theta)} \doteq p_{00} + p_{10}v_x + p_{01}v_y := \overline{\mathcal{P}}_{\sin}^r(v_x, v_y) \quad (5)$$

and analogously fit such linear polynomials for the lower bound of the sinus $\underline{\mathcal{P}}_{\sin}^r$ function and the bounds of the cosine $\underline{\mathcal{P}}_{\cos}^r$ and $\overline{\mathcal{P}}_{\cos}^r$. The methodology how we compute these parameters p_{\square} is introduced in Section IV-A. This approximation will lead to a front axle position that depends on the respective velocity terms. However, that is not the case if the orientation can be calculated analytically and leads to high errors for low velocities.

C. Modelling the Non-Holonomics

Previous MIQP formulations [3, 11, 13] have approximated the non-holonomics by bounding acceleration in x and y direction and by coupling the velocities via $v_y \in [v_x \tan(\theta_{min}), v_x \tan(\theta_{max})]$, with θ_{min} and θ_{max} being the valid orientation range of that model. However, decoupled acceleration bounds cannot yield a non-holonomic behavior. Ziegler *et al.* [1] calculate the curvature using

$$\kappa = \frac{v_x a_y - v_y a_x}{\sqrt[3]{v_x^2 + v_y^2}} \quad (6)$$

and formulate the bound constraints $\kappa \in [\kappa_{min}, \kappa_{max}]$. However, Eq. (6) is highly non-linear and thus curvature constraints cannot be expressed as a linear constraint for MIQP. To obtain constraints dependent on a_x, a_y , we transform $\kappa_{max}, \kappa_{min}$ using Eq. (6) to

$$\frac{\kappa_{max}}{v_x} \sqrt[3]{v_x^2 + v_y^2} + \frac{v_y}{v_x} a_x \geq a_y \quad (7a)$$

$$\frac{\kappa_{min}}{v_x} \sqrt[3]{v_x^2 + v_y^2} + \frac{v_y}{v_x} a_x \leq a_y. \quad (7b)$$

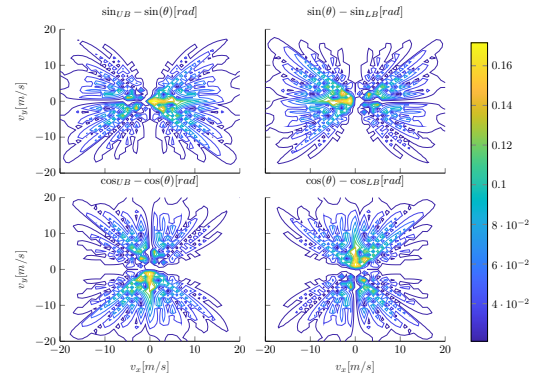


Fig. 6: Errors of the piecewise linear fitting using 32 regions of upper \square_{UB} and lower bounds \square_{LB} trigonometric functions.

We can then apply the concept of region-wise linearization described in III-A to obtain linear constraints and fit two linear polynomials for upper $\overline{\mathcal{P}}_{\kappa}^r$ and lower $\underline{\mathcal{P}}_{\kappa}^r$ bounding the curvature as shown in Section IV-B.

IV. FITTING METHOD

In this section, we will briefly describe how we fit the parameters in III-B.2 and III-C. All fits are done on a region-wise basis and yield polynomials of the form of Eq. (5).

A. Fitting the Front axle Position

In Section III-B, we motivated the need to linearize the trigonometric functions Eq. (1a) and Eq. (1b), which depend on v_x and v_y . Both sine and cosine are highly non-linear, in Fig. 5 we show the sine function. We formulate the problem to find a piecewise upper bound to a two-dimensional nonlinear function of v_x and v_y as a linear least-squares problem with linear constraints. Fig. 6 shows the errors we obtain from the fitting. For the upper and lower bounds of the sine and cosine function the orientation error is always below 0.16 rad. Due to

$$\sin(v_x = 0, v_y \rightarrow \pm\infty) = \pm\infty \quad (8a)$$

$$\cos(v_x \rightarrow \pm\infty, v_y = 0) = \pm\infty, \quad (8b)$$

we get the highest error close to the origin. For higher velocities, the errors are significantly smaller due to a better approximation of the non-linear function.

Table III shows the positional error of the front axle for a range of orientations in the first quadrant in comparison to the constant approximation (denoted by const.). We observe that the upper and lower bound always have different signs, which means that the actual axle position is always within that. This shows the validity of the over-approximation of the front axle. As expected, the error becomes smaller with an increasing number of regions, as we are using smaller linear pieces to approximate the non-linear functions. In general, the error of the velocity-dependent approximation is smaller than for the constant approximation. For velocities $\lesssim 0.1m/s$, a constant approximation yields smaller errors, as motivated by Eq. (8). Implementing an optimal transition strategy between the two approximations is the subject of future work.

TABLE III: Absolute positional errors ($f_x - [f_x, \bar{f}_x]$) and ($f_y - [f_y, \bar{f}_y]$) for the approximation of the front rear axle in meters.

θ	v		16 regions	32 regions	64 regions	128 regions
0°	const.	x	0.21, 0.00	0.05, 0.00	0.01, 0.00	0.00, 0.00
		y	0.00, -1.07	0.00, -0.55	0.00, -0.27	0.00, -0.14
	0.1 $\frac{m}{s}$	x	0.20, -0.01	0.07, -0.01	0.01, -0.01	0.01, -0.01
		y	0.01, -0.97	0.01, -0.52	0.01, -0.09	0.01, -0.01
45°	const.	x	0.01, -0.08	0.01, -0.03	0.01, -0.01	0.01, -0.01
		y	0.01, -0.01	0.01, -0.01	0.01, -0.01	0.01, -0.01
	0.1 $\frac{m}{s}$	x	0.00, -0.61	0.00, -0.35	0.00, -0.18	0.00, -0.09
		y	0.91, 0.00	0.42, 0.00	0.20, 0.00	0.10, 0.00
90°	const.	x	0.01, -0.61	0.01, -0.36	0.01, -0.17	0.01, -0.03
		y	0.89, -0.01	0.43, -0.01	0.18, -0.01	0.03, -0.01
	0.1 $\frac{m}{s}$	x	0.04, -0.19	0.02, -0.12	0.02, -0.06	0.01, -0.02
		y	0.27, -0.11	0.14, -0.05	0.06, -0.02	0.02, -0.01
90°	const.	x	0.00, -1.07	0.00, -0.55	0.00, -0.27	0.00, -0.14
		y	0.21, 0.00	0.05, 0.00	0.01, 0.00	0.00, 0.00
	0.1 $\frac{m}{s}$	x	0.01, -0.98	0.01, -0.53	0.01, -0.10	0.01, -0.01
		y	0.20, -0.01	0.07, -0.01	0.01, -0.01	0.01, -0.01
20 $\frac{m}{s}$	x	0.01, -0.01	0.01, -0.01	0.01, -0.01	0.01, -0.01	
	y	0.01, -0.08	0.01, -0.03	0.01, -0.01	0.01, -0.01	

B. Fitting the Curvature

As we discussed in Section III-C, we approximate the curvature constraints by Eq. (7). We choose to fit the polynomials \mathcal{P}_κ^r on

$$\frac{\kappa_{max}}{v_x} \sqrt{v_x^2 + v_y^2} \equiv \overline{\mathcal{P}_\kappa^r} \geq a_y - \frac{v_y}{v_x} a_x \quad (9a)$$

$$\frac{\kappa_{min}}{v_x} \sqrt{v_x^2 + v_y^2} \equiv \underline{\mathcal{P}_\kappa^r} \leq a_y - \frac{v_y}{v_x} a_x \quad (9b)$$

and use these polynomials in inequality constraints bounding a_{\star} as Eq. (9) indicates. We approximate the term $\frac{v_y}{v_x}$ in the MIQP formulation by the mean orientation within the respective region, using the region boundaries, see Eq. (2). The larger the regions (the fewer number of regions), the higher the error will be. We then solve two unconstrained linear least-square problems by minimizing the error to Eq. (9a), yielding the linear polynomial $\overline{\mathcal{P}_\kappa^r}$, and Eq. (9b), yielding $\underline{\mathcal{P}_\kappa^r}$.

V. FORMULATING THE PLANNING PROBLEM AS MIXED-INTEGER QUADRATIC PROBLEM

We model the planning problem as MIQP without restricting the validity scope of the model. The vehicle motion model is formulated as discrete linear constraints. Using binary variables, we ensure collision-freeness and a correct non-holonomic motion of the vehicle. A quadratic objective function keeps the solution close to the reference.

Subsequently, we use the nomenclature for the decision variables introduced in Table IV. The subscript \square_{ref} denotes the respective reference. We optimize a discrete time range from k_2 to k_N with Δt increment. By \mathcal{K} , we denote the time interval $[k_1, \dots, k_N]$. All decision variables are initialized with the current state of the vehicle at k_1 . We bound the speed by the minimal and maximal values \underline{v} and \bar{v} from the fitting, as our approximations are only valid there. The subscript \square_\star denotes the respective term for both, x and y direction. In the following, we will use this notation for compactness of the equations wherever it does not lead to ambiguity.

TABLE IV: Decision variables used throughout this paper, with discrete time dependency k , region dependency r , environment dependency λ , and obstacle dependency λ .

Variable	Description	Range
$p_x(k), p_y(k)$	vehicle rear axle center position	free
$v_x(k), v_y(k)$	vehicle velocity in x, y direction	$[\underline{v}, \bar{v}]$
$a_x(k), a_y(k)$	vehicle acceleration in x, y direction	$[\underline{a}, \bar{a}]$
$u_x(k), u_y(k)$	vehicle jerk in x, y direction	$[\underline{u}, \bar{u}]$
$\bar{f}_x(k), \bar{f}_y(k)$	upper bound of the vehicle front axle center position	free
$\underline{f}_x(k), \underline{f}_y(k)$	lower bound of the vehicle front axle center position	free
$\rho(k, r)$	region r the vehicle is in at time k	binary
$\Psi(k)$	no region change allowed	binary
$e(k, \lambda)$	vehicle is not inside the environment sub-polygon λ at time t	binary
$o_p(k, \lambda)$	vehicle does not collide with obstacle at time t at the reference point p	binary

A. Formulating Reference Tracking as Objective Function

As cost function J , we chose the weighted sum of position and velocity distance to the reference. For acceleration and jerk, we aim to minimize the squared values to avoid changes. Suitable cost terms q_\square balance the solution.

$$J = \sum_{k \in \mathcal{K}} (q_p (p_x(k) - p_{x,ref}(k))^2 + q_p (p_y(k) - p_{y,ref}(k))^2 + q_v (v_x(k) - v_{x,ref}(k))^2 + q_v (v_y(k) - v_{y,ref}(k))^2 + q_a a_x(k)^2 + q_a a_y(k)^2 + q_u u_x(k)^2 + q_u u_y(k)^2) \quad (10)$$

To formulate a MIQP problem, the objective function has to be a sum of squared or linear terms. Therefore, we cannot use the absolute velocity (or acceleration) in the objective, since with $|v| = \sqrt{(v_x^2 + v_y^2)}$, the term $(|v|^2 - |v_{ref}|^2)^2$ is not quadratic. Similarly, costs on the angular velocity would result in non-quadratic terms. Furthermore, as we do not calculate a distance to objects in the model, we cannot use these distance terms in the cost function. Note that with this formulation of the objective function we track a reference trajectory and not a reference path.

B. Formulating the Vehicle Model as Constraints

The vehicle dynamics are defined by:

$$\begin{bmatrix} p_{\star}(k_{i+1}) \\ v_{\star}(k_{i+1}) \\ a_{\star}(k_{i+1}) \end{bmatrix} = \begin{bmatrix} 1 & \Delta t & \Delta t^2/2 \\ 0 & 1 & \Delta t \\ 0 & 0 & 1 \end{bmatrix} \begin{bmatrix} p_{\star}(k_i) \\ v_{\star}(k_i) \\ a_{\star}(k_i) \end{bmatrix} + \begin{bmatrix} \Delta t^3/6 \\ \Delta t^2/2 \\ \Delta t \end{bmatrix} u_{\star}(k_i) \quad (11)$$

$\forall k_i \in [k_1, \dots, k_{N-1}]$

With this linear model correct non-holonomic motion as well as correct acceleration and steering angle limits are only valid around a small reference orientation. We overcome this property by introducing validity *regions*, see Section III-A. The set of regions covering the full orientation of 360 degrees is denoted by \mathcal{R} . By the superscript \square^r , we denote region-dependent parameters in the following. All region-dependent parameters are summarized in Table II.

We set the binary decision variable $\rho(k, r)$ defining in which region r the vehicle is in at time k according to the two

lines defining the region, cf. Eq. (2). We force the solution to lie in exactly one region.

$$\sum_{r \in \mathcal{R}} \rho(k, r) = 1 \quad \forall k \in \mathcal{K} \quad (12)$$

Since with an increasing number of regions, the evaluation time of the model increases as well, we a-priori restrict the optimization to only use a set of *allowed* regions and pre-compute a parameter ϱ^r accordingly. Non-allowed regions are those that cannot physically be reached anyway within the planning horizon. To implement logical constraints, we use the well-know technique of introducing a big constant M to switch inequalities. The intuitive explanation of the now often used term $M(1 - \rho(k, r))$ is "this equation is active if and only if region r is active at time-step k ". The active region is set by the following set of constraints:

$$\alpha^r v_y(k) \geq \beta^r v_x(k) - M(1 - \rho(k, r)) \quad (13a)$$

$$\gamma^r v_y(k) \leq \delta^r v_x(k) + M(1 - \rho(k, r)) \quad (13b)$$

$$\forall k \in \mathcal{K}, \forall r \in \mathcal{R}, \text{ if } \varrho^r(r) = 1$$

Regions marked as non-possible by ϱ^r may not be selected. With this implementation, the model formulation is generic for all scenarios.

$$\rho(k, r) = 0 \quad \forall k \in \mathcal{K}, \forall r \in \mathcal{R}, \text{ if } \varrho^r = 0 \quad (14)$$

We impose region-dependent limits on acceleration and jerk to make sure we always meet the correct absolute possible acceleration and jerk. As acceleration a_{\star} and jerk u_{\star} are defined in a global system, the limits are rotated with the regions. In Eq. (15), we only state the constraints for the acceleration, the formulation for jerk is alike. Note that the speeds are naturally bounded correctly by Eq. (13).

$$a_{\star}(k) \leq \overline{a_{\star}^r} + M(1 - \rho(k, r)) \quad (15a)$$

$$a_{\star}(k) \geq \underline{a_{\star}^r} - M(1 - \rho(k, r)) \quad (15b)$$

$$\forall k \in \mathcal{K}, \forall r \in \mathcal{R}, \text{ if } \varrho^r = 1$$

C. Modeling the Non-Holonomy as Constraints

To ensure a correct non-holonomic movement of the vehicle, we limit the lateral acceleration using the maximal available curvature per region as motivated in Section III-C. We fit lower and upper linear approximation polynomials $\overline{\mathcal{P}_{\kappa}^r}$ and $\underline{\mathcal{P}_{\kappa}^r}$ dependent on v_x, v_y , and the region r . The following constraints model the inequalities bounding the curvature κ as stated in Eq. (7).

$$a_y(k) - \frac{\beta^r + \delta^r}{\alpha^r + \gamma^r} a_x(k) \leq \overline{\mathcal{P}_{\kappa}^r}(v_x(k), v_y(k)) + M(1 - \rho(k, r)) + M\Psi(k) \quad (16a)$$

$$a_y(k) - \frac{\beta^r + \delta^r}{\alpha^r + \gamma^r} a_x(k) \geq \underline{\mathcal{P}_{\kappa}^r}(v_x(k), v_y(k)) + M(1 - \rho(k, r)) + M\Psi(k) \quad (16b)$$

$$\forall k \in \mathcal{K}, \forall r \in \mathcal{R}, \text{ if } \varrho^r = 1$$

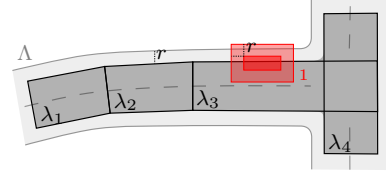


Fig. 7: Schematic sketch showing how the environment polygon Λ is shrieked by the collision circle radius r and split into several convex polygons λ_{\square} . Obstacles \square are also inflated with r .

At very low vehicle speeds, too tight curvature constraints limit the acceleration so that other accelerations than zero are not possible. In contrast, too loose curvature constraints will violate the non-holonomy. We therefore introduce a minimum speed limit. If either $|v_x|$ or $|v_y|$ is below that limit, regions changes are not allowed, which we indicate by setting the binary helper variable Ψ to true.

$$\rho(k_i, r) - \rho(k_{i-1}, r) \leq 1 - \Psi(k_i) \quad (17a)$$

$$\rho(k_i, r) - \rho(k_{i-1}, r) \geq -1 + \Psi(k_i) \quad (17b)$$

$$\forall k_i \in [k_2, \dots, k_N], \forall r \in \mathcal{R}$$

D. Approximating the Front Axle Position as Constraints

In Section III-B we introduced the concept of how to approximate lower and upper bounds for the position of the front axle of the vehicle. Using this idea, we formulate constraints performing an (over-)approximative collision check for the front axle instead of computing the intersection or distance of the actual vehicle shape with obstacles or the environment. We calculate the lower and upper bounds $\underline{f_{\star}}$, $\overline{f_{\star}}$ of the true, unknown, front position (f_x, f_y) with respect to the current region r where l denotes the wheelbase of the vehicle. We only state the equations for the upper bounds here, the lower bound constraints are formulated alike.

$$M(\rho(k, r) - 1) \leq \overline{f_x}(k) - p_x(k) - l \overline{\mathcal{P}_{\cos}^r}(v_x(k), v_y(k)) \quad (18a)$$

$$M(1 - \rho(k, r)) \geq \overline{f_x}(k) - p_x(k) - l \overline{\mathcal{P}_{\cos}^r}(v_x(k), v_y(k)) \quad (18b)$$

$$M(\rho(k, r) - 1) \leq \overline{f_y}(k) - p_y(k) - l \overline{\mathcal{P}_{\sin}^r}(v_x(k), v_y(k)) \quad (18c)$$

$$M(1 - \rho(k, r)) \geq \overline{f_y}(k) - p_y(k) - l \overline{\mathcal{P}_{\sin}^r}(v_x(k), v_y(k)) \quad (18d)$$

$$\forall k_i \in \mathcal{K}, \forall r \in \mathcal{R}, \text{ if } \varrho^r(r) = 1$$

E. Constraints Limiting the Model to Stay on the Road

This section introduces how we enforce the vehicle to stay within an environment modeled as an arbitrary, potentially non-convex closed polygon Λ [2]. The environment is deflated with the radius of the collision circles, see Fig. 7. Non-convex environment polygons are split into several convex sub-polygons λ . We enforce the vehicle to be in at least

one of these convex sub-polygons. These sub-polygons are represented by a set of line segments, denoted by l , between two points a^l and b^l . With this strategy, the polygon-to-polygon collision check narrows down to a point-to-polygon check.

We enforce the rear axle position p_{\star} and the lower and upper bounds of the front axle position, namely the four points $(\underline{f}_x, \underline{f}_y)$, $(\overline{f}_x, \underline{f}_y)$, $(\underline{f}_x, \overline{f}_y)$, and $(\overline{f}_x, \overline{f}_y)$, to be within the environment polygon. Each set of constraints is formulated in a similar manner, Eq. (19) states the equations for the point (p_x, p_y) . The decision variable e models that all five points do not collide with the environment sub-polygon λ at time k . By l_{\star} , we here denote $b_{\star}^l - a_{\star}^l$ for x and y respectively.

$$l_x(p_y(k) - a_y^l) - l_y(p_x(k) - a_x^l) \leq -Me(k, \lambda) \quad (19)$$

$$\forall k \in \mathcal{K}, \forall l \in \lambda, \forall \lambda \in \Lambda$$

To ensure that all vehicle points are at least within one of the environment polygons, we set

$$\sum_{\lambda \in \Lambda} e(k, \lambda) \leq |\Lambda| - 1 \quad \forall k \in \mathcal{K}, \quad (20)$$

where $|\Lambda|$ denotes the number of convex sub-environments.

F. Formulating Collision Avoidance as Constraints

We enforce the vehicle to not collide with an arbitrary number of static or dynamic convex obstacle polygons \mathcal{O} . Non-convex obstacle shapes as described in Section V-E split into several convex ones. The obstacles are inflated with the radius of the collision circles, cf. Fig. 7.

l again denotes one line segment of one obstacle within the set of obstacles \mathcal{O} with startpoint a^l and endpoint b^l . We enforce the vehicle rear axle position p_{\star} and the four permutations of the front axle bounds to be collision-free. In contrast to the environment, which we assume as constant over time, the obstacle polygons may vary their position and shape over time, but preserve the polygon topology. By decision variables o_{\star} , we indicate whether none of the five points collide with the obstacle. Eq. (21) states the inequalities for the point (p_x, p_y) constraining o_p . The four points representing the collision shape approximation of the front axle f_{\star} are each taken into account by four more sets of similar decision variables o_{\star} and sets of inequalities.

$$l_x(p_y(k) - a_y^l) - l_y(p_x(k) - a_x^l) \leq Mo_p(k, l) \quad (21)$$

$$\forall k \in \mathcal{K}, \forall l \in \lambda, \forall \lambda \in \mathcal{O}$$

Denoting the number of line segments in a sub-polygon by $\|\cdot\|$, we enforce each of the five points to not lie within an obstacle.

$$\sum_{l \in \lambda} o_p(k, l) \leq \|\lambda\| - 1 \quad \forall k \in \mathcal{K}, \forall \lambda \in \mathcal{O} \quad (22)$$

G. Optimization Problem

Collecting all constraints from above, the final optimization problem can be written as

$$\begin{aligned} & \text{minimize (10)} \\ & \text{subject to (11), (12), (13), (14), (15), (16),} \\ & \quad (17), (18), (19), (20), (21), (22) \end{aligned}$$

The formulation is a standard MIQP model that can be solved with an off-the-shelf solver. For a faster optimization solution, we bound acceleration a_{\star} and jerk u_{\star} with constant values \underline{a} , \bar{a} and \underline{u} , \bar{u} respectively. We chose these values as minima and maxima of the region-dependent limits \underline{a}_{\star}^r , \bar{a}_{\star}^r and \underline{u}_{\star}^r , \bar{u}_{\star}^r respectively.

VI. EVALUATION

We will now evaluate our model in two different scenarios. We prove in Section VI-A, that the result of the optimization is a drivable trajectory for a non-holonomic vehicle model. Section VI-B show the performance in an obstacle avoidance scenario. We only apply cost term on reference position tracking. We use a model with 32 regions and velocity-dependent front axle approximation.

A. Preserving the Non-Holonomy

To show the effectiveness of our constraints guaranteeing non-holonomic motions, we optimize two different reference trajectories, both forming a circle to perform a 90-degree turn. While it is preferable to only generate reference trajectories with only valid curvatures, this example clearly shows that our model preserves the non-holonomy. The same property is also necessary for obstacle avoidance. As baseline algorithms for comparison we implemented two SQP-based optimization models, one using a standard bicycle model and another using the same triple integrator as our MIQP model but with a nonlinear curvature constraint, following Eq. (6).

Fig. 8 shows the results for a turning radius that our vehicle model is able to follow. Our optimization yields a trajectory that closely follows the reference. However, the second reference in Fig. 9 models a turning radius that is too small (the curvature of the reference exceeding the limits). As desired, our model does not follow the reference and yields a trajectory that stays within the curvature bounds. As we fit the curvature approximation polygons in the mean of each region (see Section IV-B), we can slightly exceed the curvature bound at region boundaries. This can easily be mitigated using a safety margin.

B. Avoiding Dynamic Obstacles within the Road Boundaries

The second example considers a two-lane road, where the ego vehicle drives at the speed of 30km/h and approaches a slower vehicle traveling at 10km/h. There is oncoming traffic in the other lane traveling at 30km/h. The reference trajectory represents the center line of the right lane traveling at the reference speed. We obtain deterministic predictions of those two traffic participants and include them as dynamic

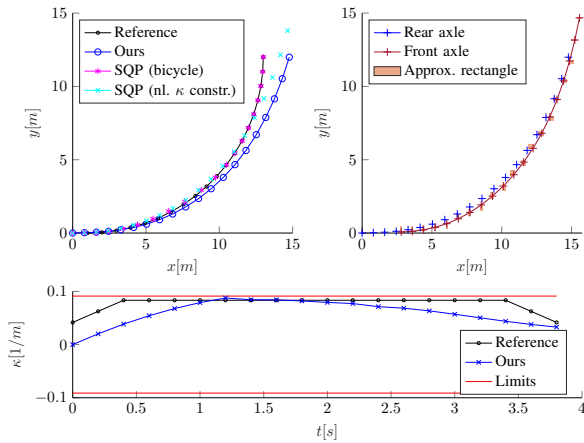


Fig. 8: Feasible reference: Our model stays within the curvature bounds (lower) and shows good trajectory tracking behavior as the reference implementations using an SQP optimizer does (upper left). The true front axle position is always within the lower/upper bound approximation rectangles of the front axle (upper right).

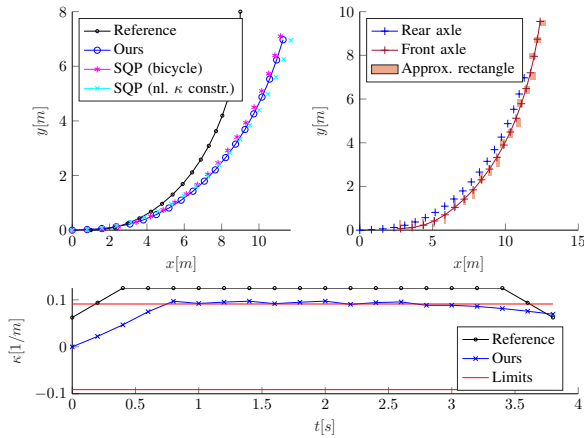


Fig. 9: Infeasible reference: All three optimization solutions cannot track the reference despite operating at maximum curvature.

obstacles in our optimization. Fig. 10 shows that the optimizer is able to find a trajectory that overtakes the red vehicle in front and goes back to the right lane to avoid the green, oncoming vehicle. We observe that the acceleration in the y -direction stays within the acceleration limits. It is much closer than the curvature-induced acceleration limit following Eq. (16), which is reasonable, as lateral movement in straight scenarios traveling at moderate or high velocities is constrained by the inertia of the vehicle, not the non-holonomics.

VII. CONCLUSION AND FUTURE WORK

We introduced a novel mixed-integer formulation for the behavior planning problem. We showed the correct non-holonomic motion of our optimized result for arbitrary road curvatures and arbitrary orientations of the vehicle. Using linear overapproximations of the collision shape, we enable the MIQP formulation to not cause any collisions. This provides us with a solution method, that obtains kinematically valid, globally optimal solutions avoiding obstacles without any

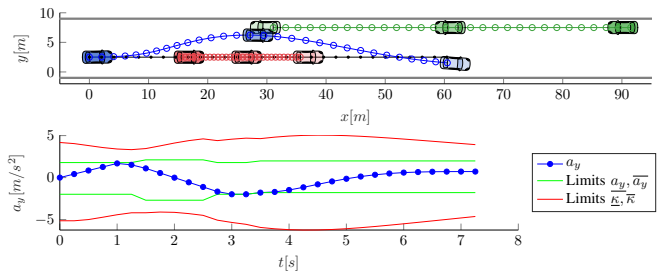


Fig. 10: An Overtaking scenario with oncoming traffic. The upper figure shows the trajectories for the ego vehicle (blue) and the other traffic participants (red, green). a_y of the planned trajectory stays within the region-dependent acceleration bounds as well as the bounds approximating the curvature limit.

form of randomness. This property is certainly a favorable feature for validation and certification. This will enable us in the future to apply the MIQP behavior planning model in real-road driving scenarios using our institute’s research vehicle [14]. Future work will expand this framework to the multi-agent case for cooperative planning as well as to investigate the benefits from logical constraints for the formulation of traffic rules.

ACKNOWLEDGMENT

This research was funded by the Bavarian Ministry of Economic Affairs, Regional Development and Energy, project Dependable AI and supported by the Intel Collaborative Research Institute - Safe Automated Vehicles.

REFERENCES

- [1] J. Ziegler, P. Bender, T. Dang, and C. Stiller, “Trajectory planning for Bertha – A local, continuous method,” in *Proc. of the IEEE Intelligent Vehicles Symposium*, 2014.
- [2] C. Frese and J. Beyerer, “A comparison of motion planning algorithms for cooperative collision avoidance of multiple cognitive automobiles,” in *Proc. of the IEEE Intelligent Vehicles Symposium*, 2011.
- [3] X. Qian, F. Althé, P. Bender, C. Stiller, and A. de La Fortelle, “Optimal trajectory planning for autonomous driving integrating logical constraints: An MIQP perspective,” in *Proc. of the IEEE International Conference on Intelligent Transportation Systems*, 2016.
- [4] P. Bender, Ö. S. Tas, J. Ziegler, and C. Stiller, “The combinatorial aspect of motion planning: Maneuver variants in structured environments,” in *Proc. of the IEEE Intelligent Vehicles Symposium*, 2015.
- [5] F. Althé and A. De La Fortelle, “Partitioning of the free space-time for on-road navigation of autonomous ground vehicles,” in *2017 IEEE 56th Annual Conference on Decision and Control (CDC)*, 2018.
- [6] J. Nilsson, M. Brannstrom, J. Fredriksson, and E. Coelingh, “Longitudinal and Lateral Control for Automated Yielding Maneuvers,” *IEEE Transactions on Intelligent Transportation Systems*, vol. 17, no. 5, pp. 1404–1414, May 2016.
- [7] B. Gutjahr, C. Pek, L. Gröll, and M. Werling, “Recheneffiziente Trajektorienoptimierung für Fahrzeuge mittels quadratischem Programm,” *At-Automatisierungstechnik*, vol. 64, no. 10, pp. 786–794, 2016.
- [8] K. Esterle, P. Hart, J. Bernhard, and A. Knoll, “Spatiotemporal Motion Planning with Combinatorial Reasoning for Autonomous Driving,” in *Proc. of the IEEE International Conference on Intelligent Transportation Systems*, 2018.

- [9] C. Miller, C. Pek, and M. Althoff, "Efficient Mixed-Integer Programming for Longitudinal and Lateral Motion Planning of Autonomous Vehicles," in *Proc. of the IEEE Intelligent Vehicles Symposium*, IEEE, Jun. 2018.
- [10] C. Frese, *Planung kooperativer Fahrmanöver für kognitive Automobile*. KIT Scientific Publishing, 2012.
- [11] C. Burger and M. Lauer, "Cooperative Multiple Vehicle Trajectory Planning using MIQP," in *Proc. of the IEEE International Conference on Intelligent Transportation Systems*, 2018.
- [12] T. Kessler and A. Knoll, "Cooperative Multi-Vehicle Behavior Coordination for Autonomous Driving," in *Proc. of the IEEE Intelligent Vehicles Symposium*, 2019.
- [13] J. Eilbrecht and O. Stursberg, "Cooperative driving using a hierarchy of mixed-integer programming and tracking control," in *Proc. of the IEEE Intelligent Vehicles Symposium*, IEEE, Jun. 2017.
- [14] T. Kessler, J. Bernhard, M. Buechel, *et al.*, "Bridging the gap between open source software and vehicle hardware for autonomous driving," in *Proc. of the IEEE Intelligent Vehicles Symposium*, 2019.