

First Evaluation of Swedish & Finnish Corner Reflectors

Author: B. Sc. Simon Schiller

Co-Authors: Dr.-Ing. Thomas Gruber, M. Sc. Marius Schlaak

Technical University of Munich

TUM School of Engineering and Design

Chair of Astronomical and Physical Geodesy

Helsinki, 13th March 2023

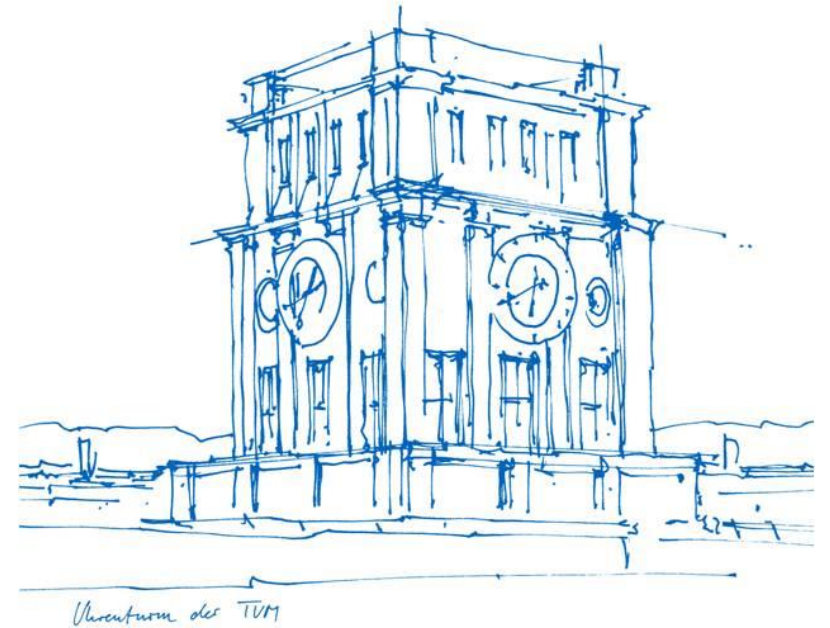
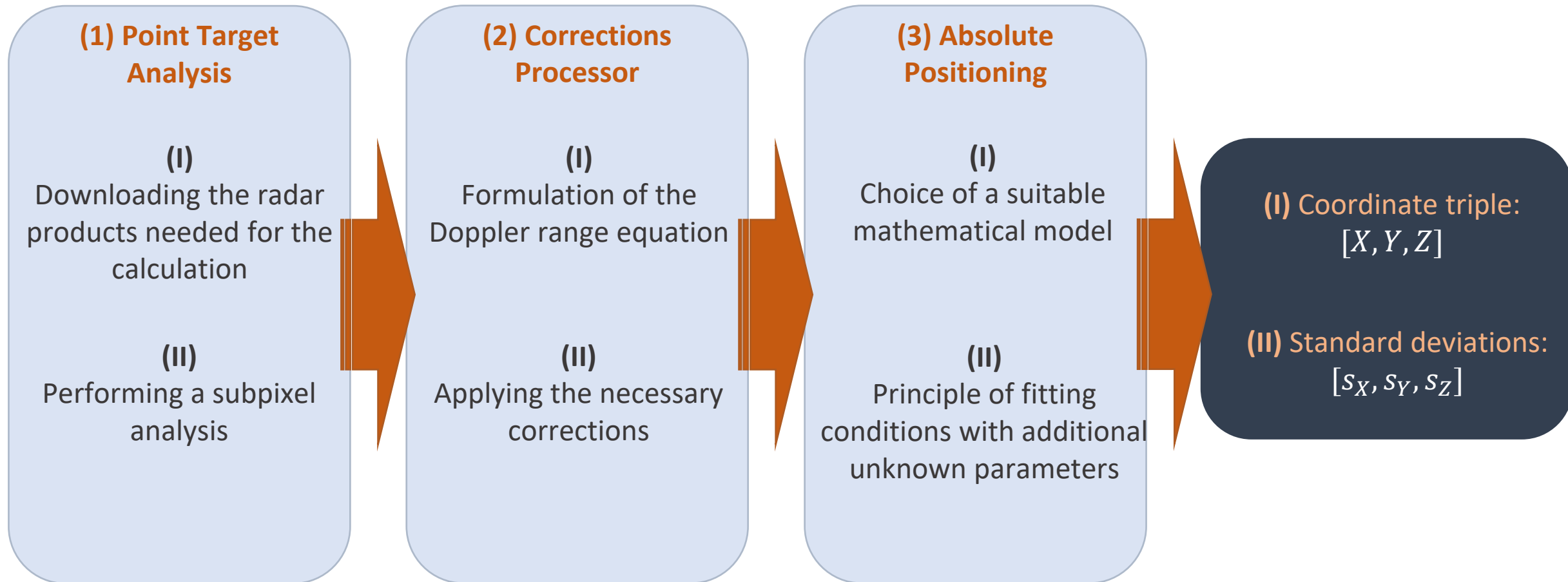


Table of Contents

- 1. Short Introduction**
- 2. Finnish Corner Reflectors**
 - 2.1 Location-specific Analysis
 - 2.2 Visualization of the Results
- 3. Swedish Corner Reflector**
 - 3.1 Location-specific Analysis
 - 3.2 Visualization of the Results
- 4. Comparison**
- 5. Conclusion**

1. Short Introduction



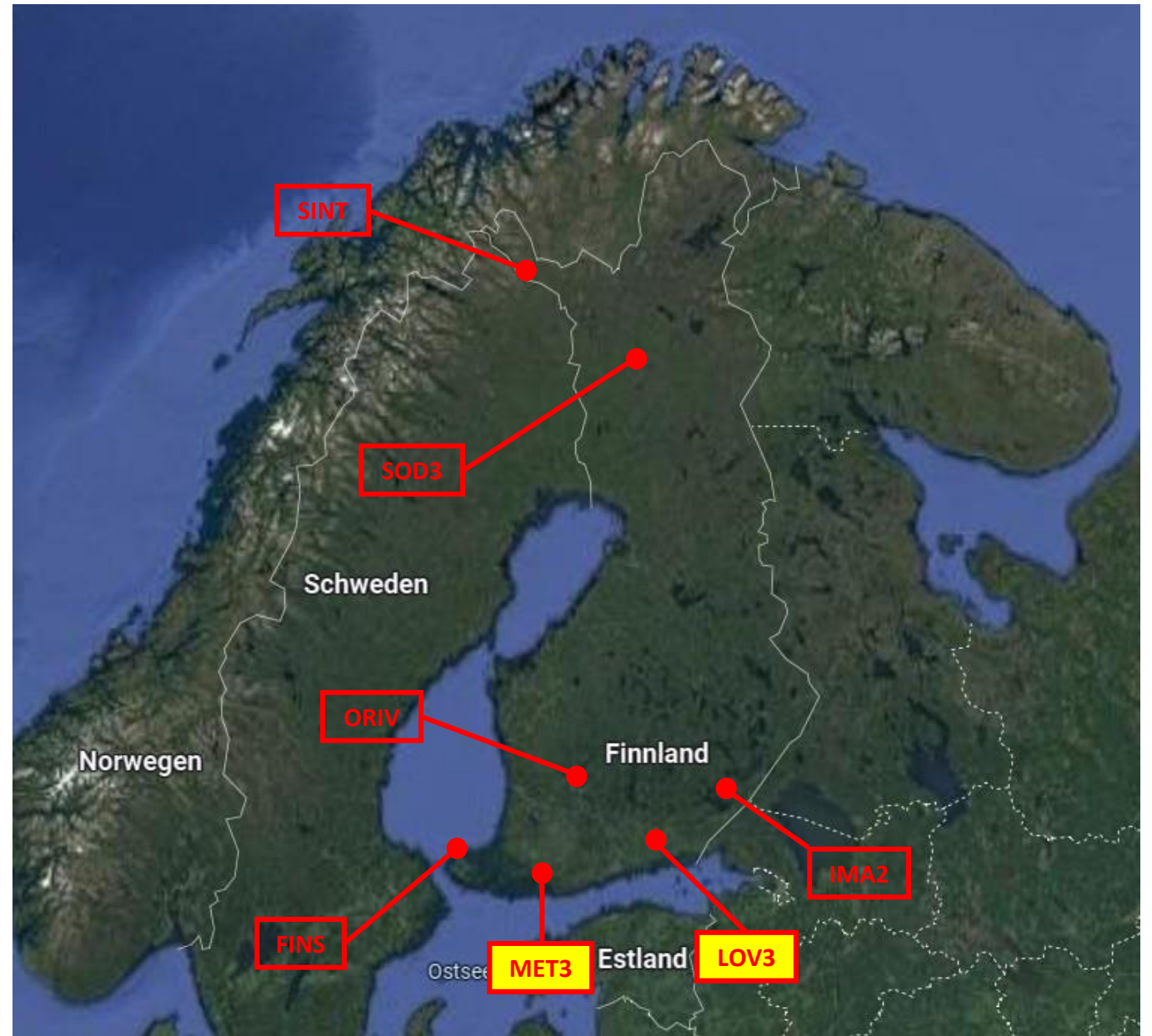
2. Finnish Corner Reflectors

Location-specific Analysis



2. Finnish Corner Reflectors

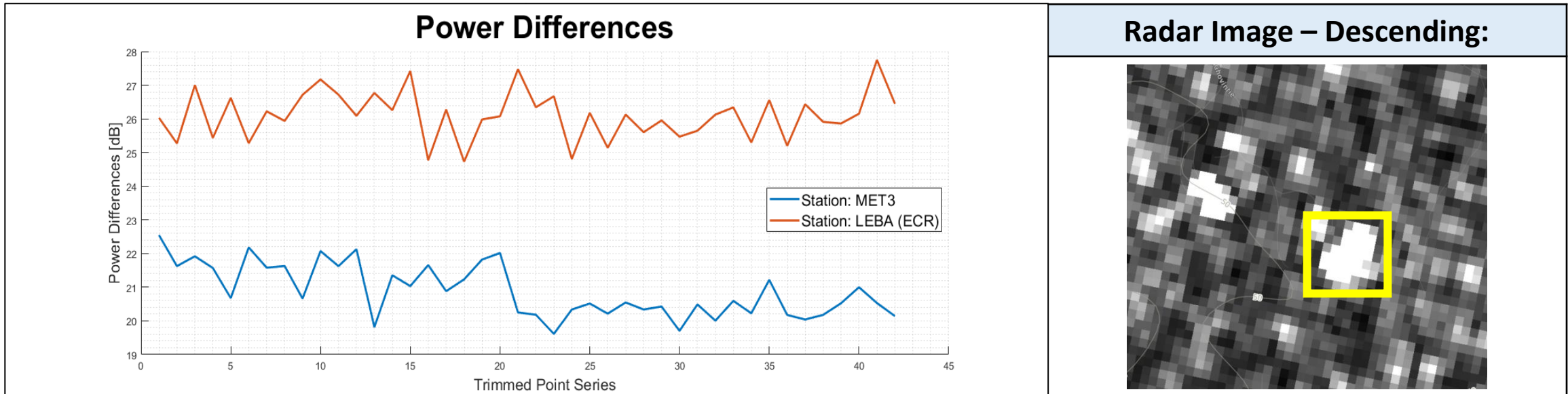
Location-specific Analysis



2. Finnish Corner Reflectors

2.1 Location-specific Analysis – MET3

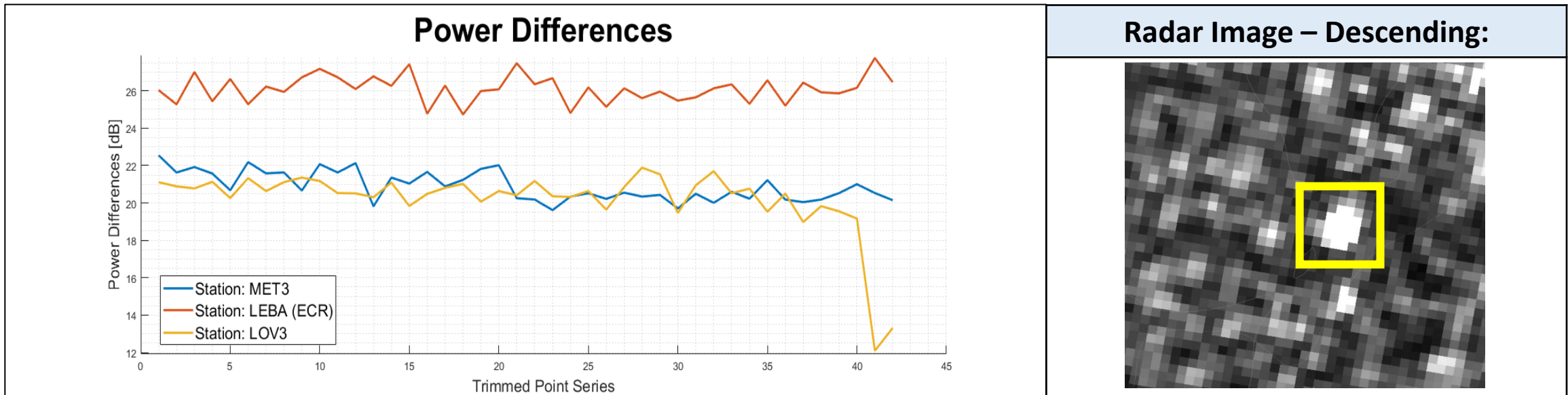
- **Location:** Metsähovintie
- **Corner Direction:** Descending
- **Date of Installation:** Januar 2020



2. Finnish Corner Reflectors

2.1 Location-specific Analysis – LOV3

- **Location:** Loviisa
- **Corner Direction:** Descending
- **Date of Installation:** December 2021

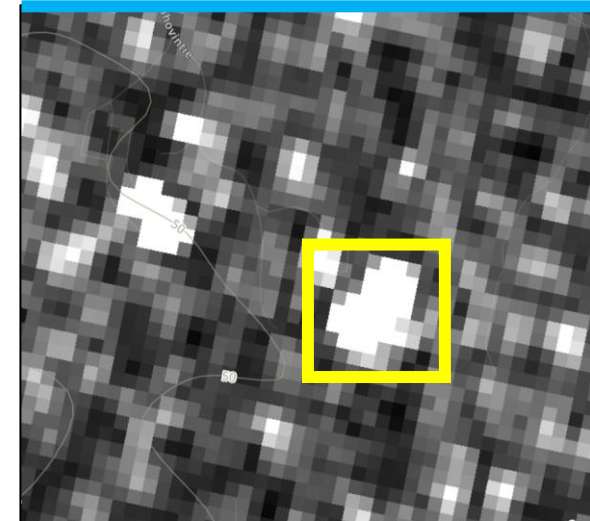


2. Finnish Corner Reflectors

2.2 Visualization of the Results – MET3

	Coordinates [m]	Standard Deviation [\pm m]
X	2892592.3127	0.0284
Y	1311868.2060	0.0327
Z	5512593.1975	0.0326

Range Observations: 201



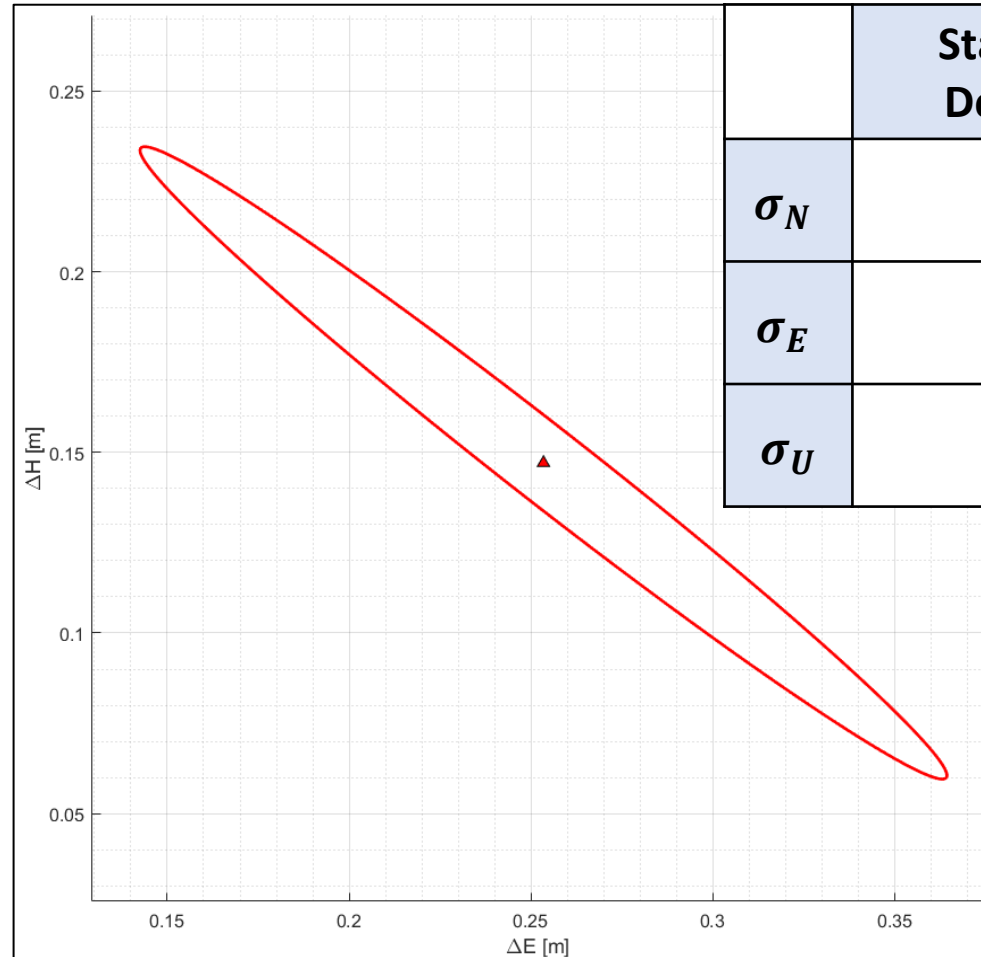
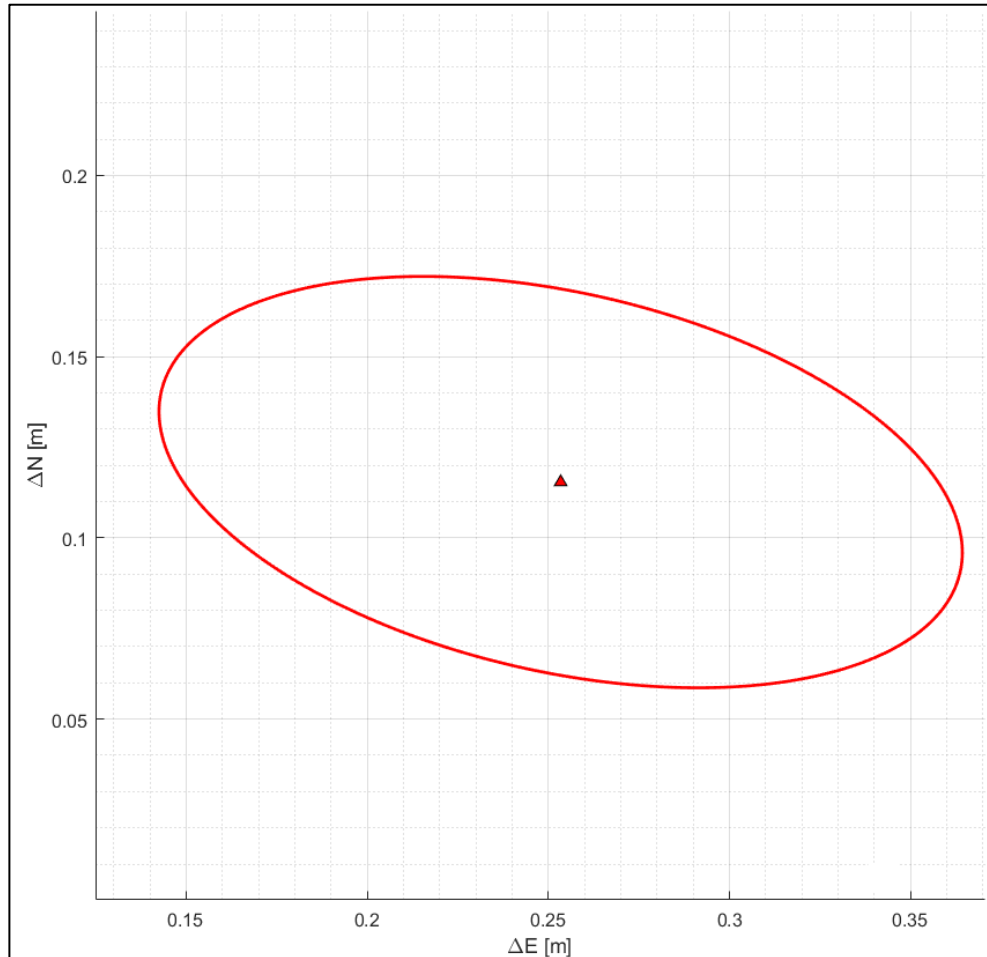
Azimuth
Observations:
203

2. Finnish Corner Reflectors

2.2 Visualization of the Results – MET3

Range Observations: 201

Azimuth Observations: 203



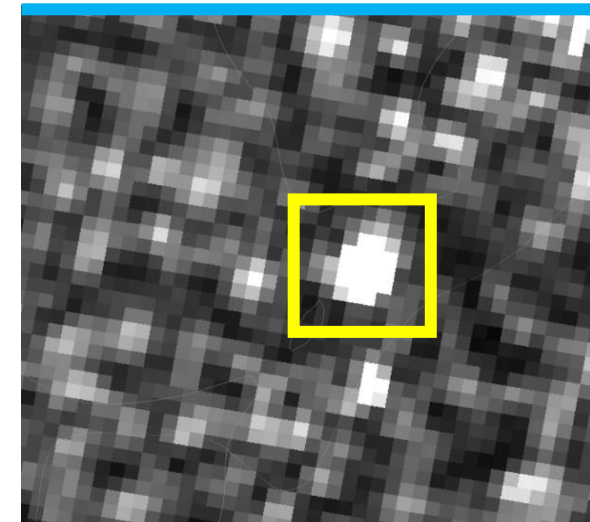
	Station Standard Deviation [\pm m]:
σ_N	0.0202
σ_E	0.0395
σ_U	0.0312

2. Finnish Corner Reflectors

2.2 Visualization of the Results – LOV3

	Coordinates [m]	Standard Deviation [\pm m]
X	2828356.1916	0.0507
Y	1396893.3833	0.0568
Z	5524907.3823	0.0560

Range Observations: 53



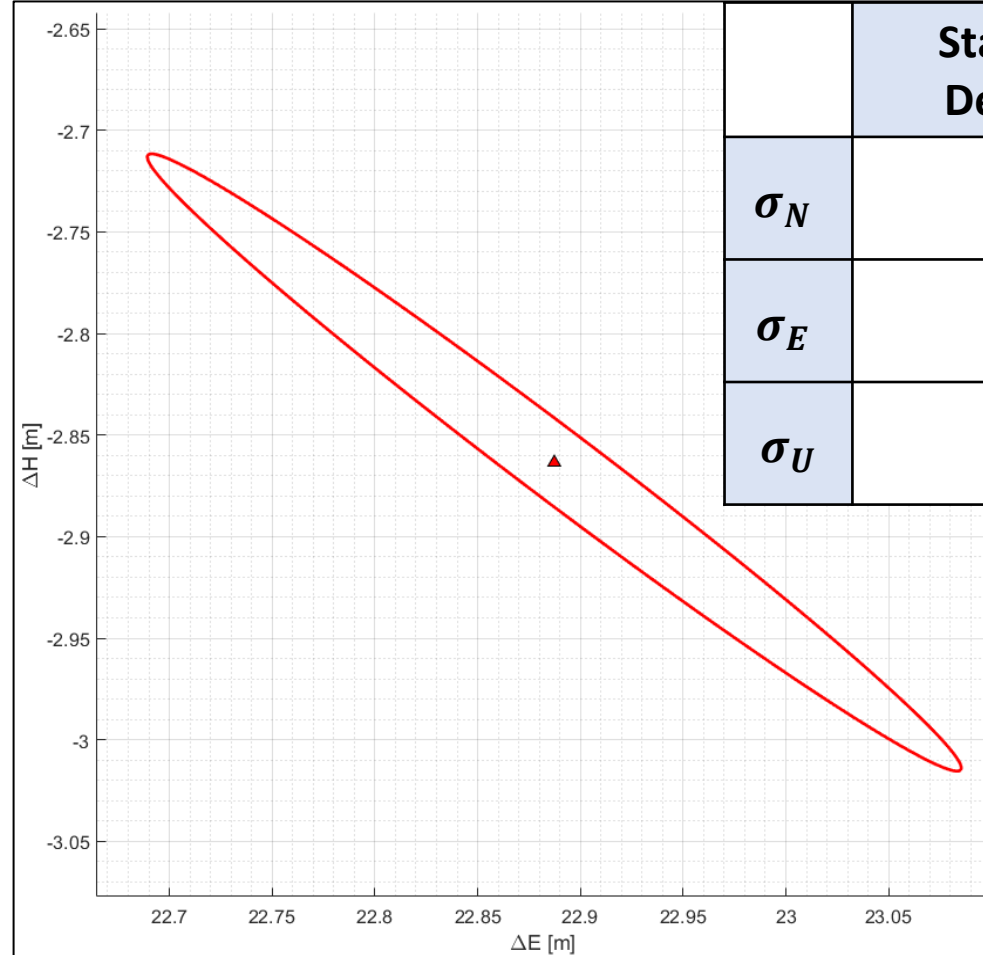
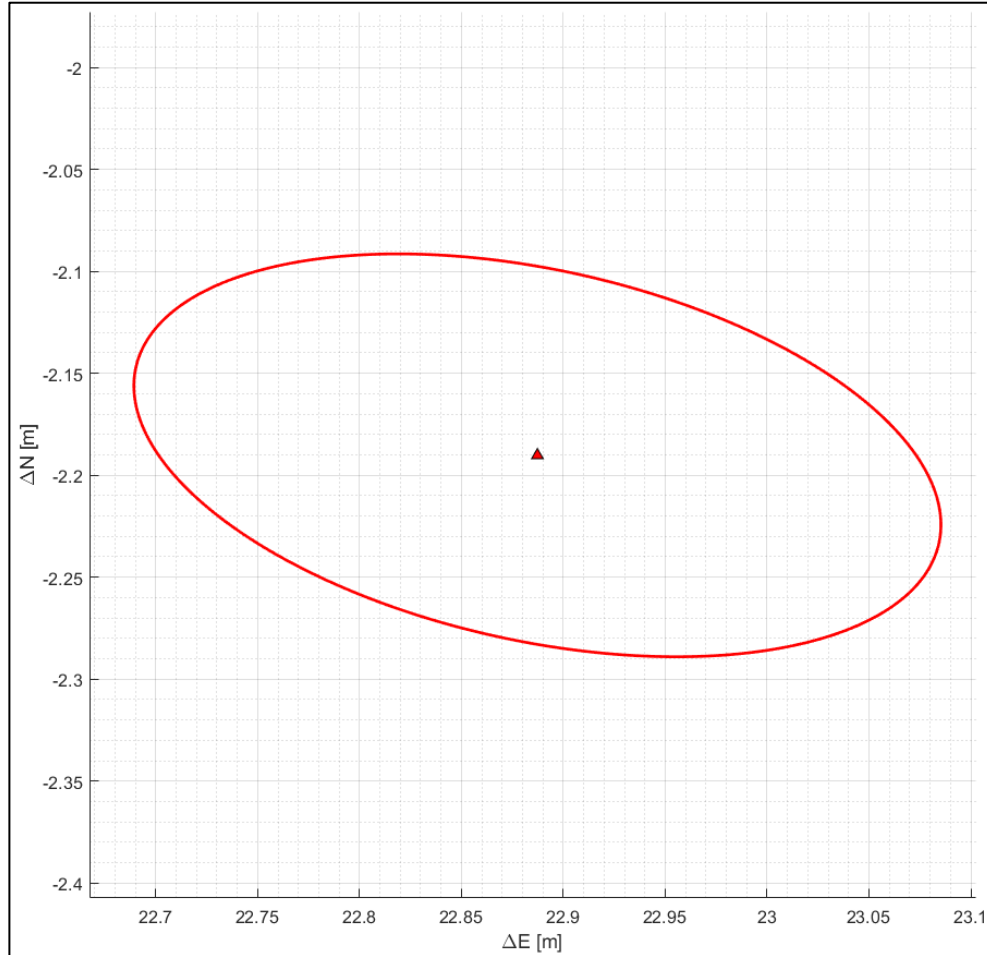
Azimuth Observations:
51

2. Finnish Corner Reflectors

2.2 Visualization of the Results – LOV3

Range Observations: 53

Azimuth Observations: 51



	Station Standard Deviation [\pm m]:
σ_N	0.0348
σ_E	0.0698
σ_U	0.0535

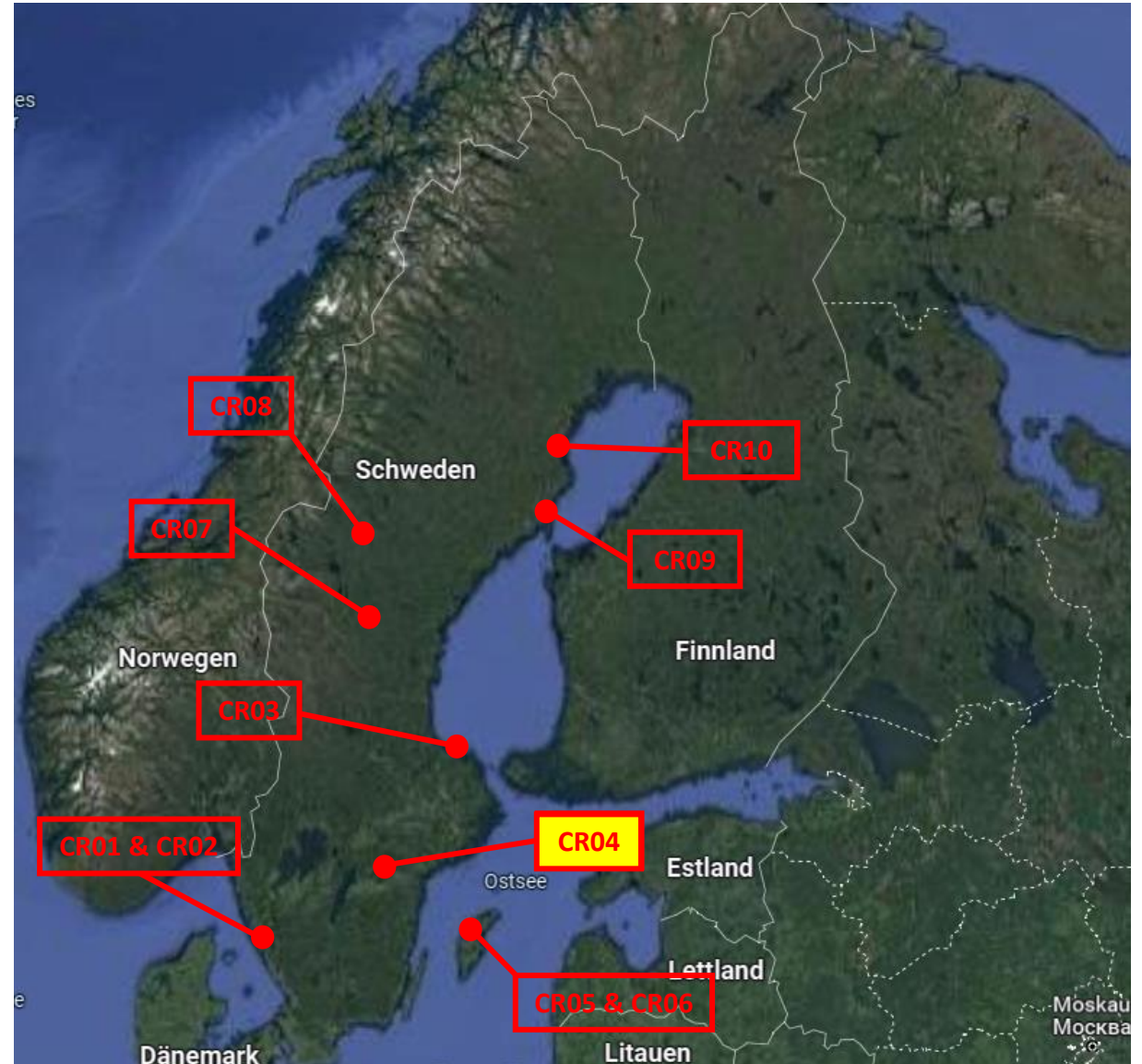
3. Swedish Corner Reflectors

Location-specific Analysis



3. Swedish Corner Reflectors

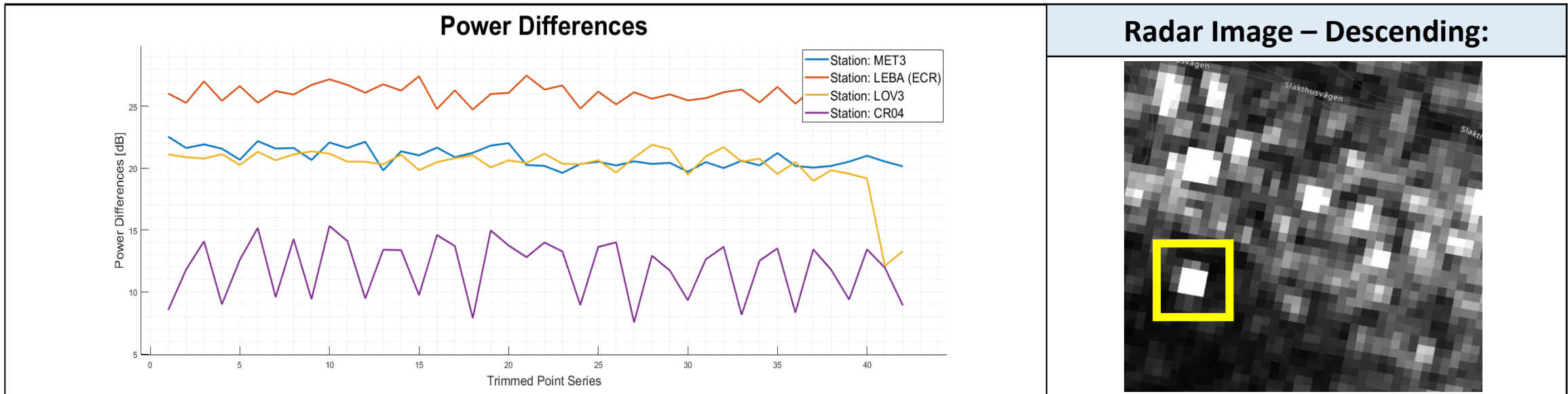
Location-specific Analysis



3. Swedish Corner Reflectors

3.1 Location-specific Analysis – CR04

- **Location:** Norrköping
- **Corner Direction:** **Descending** and **Ascending** (Double Back Flipped Square)
- **Date of Installation:** November 2021

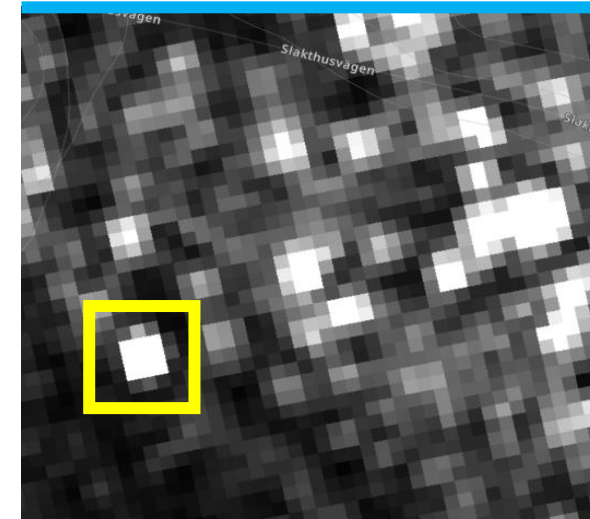


3. Finnish Corner Reflectors

3.2 Visualization of the Results – CR04

	Coordinates [m]	Standard Deviation [\pm m]
X	3199127.4033	0.0311
Y	932167.2413	0.0128
Z	5420307.6903	0.0267

Range Observations: 125

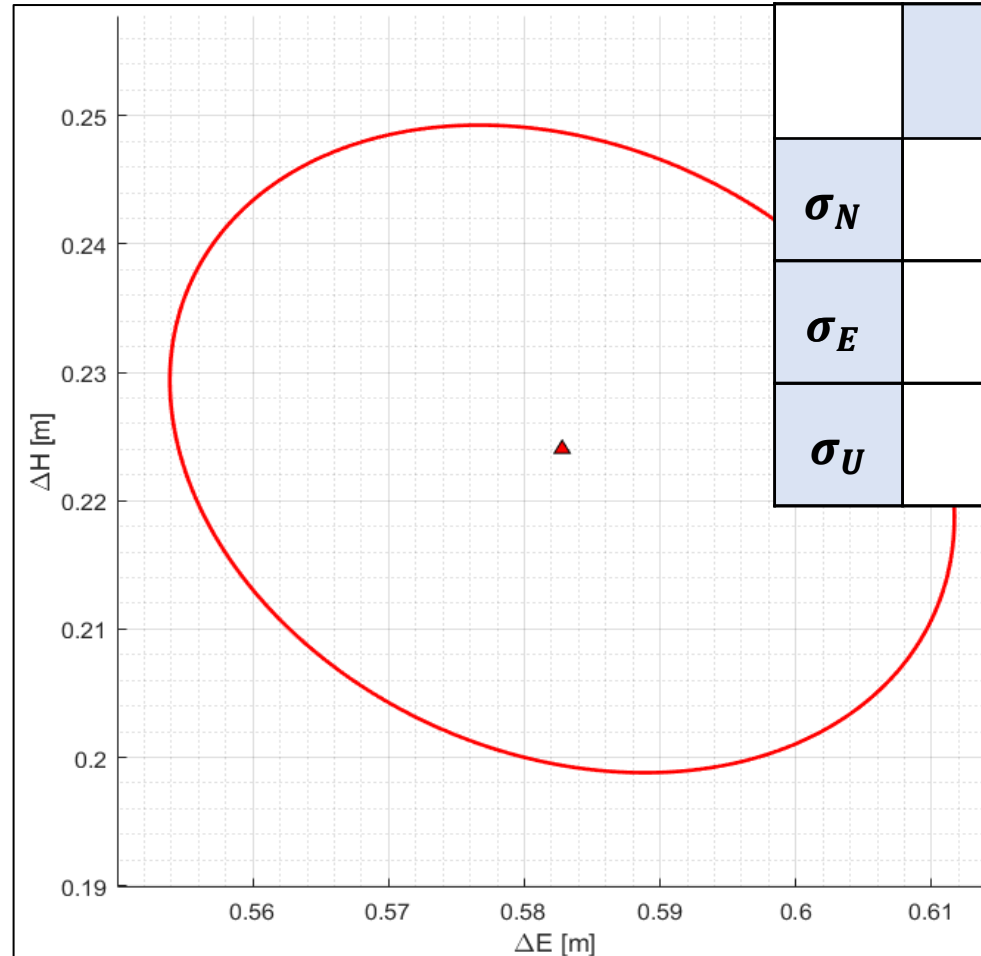
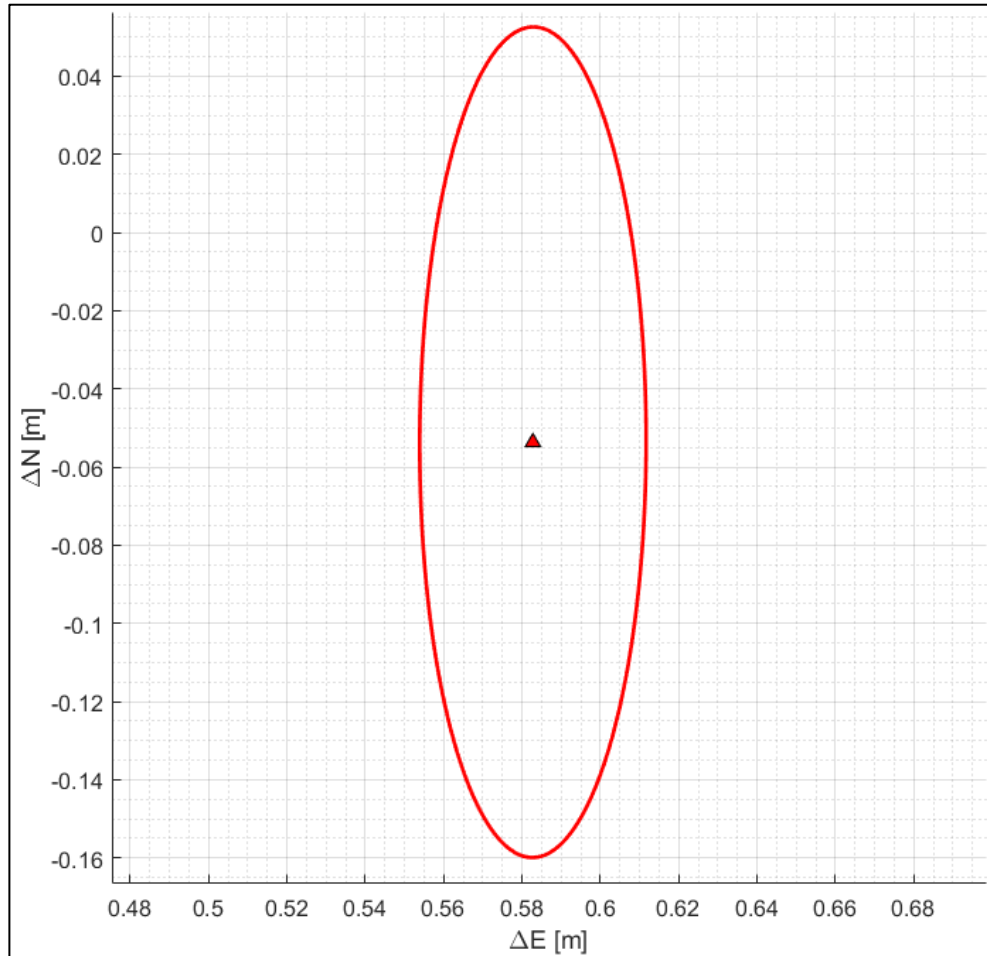


Azimuth Observations: 123

3. Finnish Corner Reflectors

3.2 Visualization of the Results – CR04

Range Observations: 125
Azimuth Observations: 123



	Station Standard Deviation [\pm m]:
σ_N	0.0408
σ_E	0.0100
σ_U	0.0090

4. Comparison

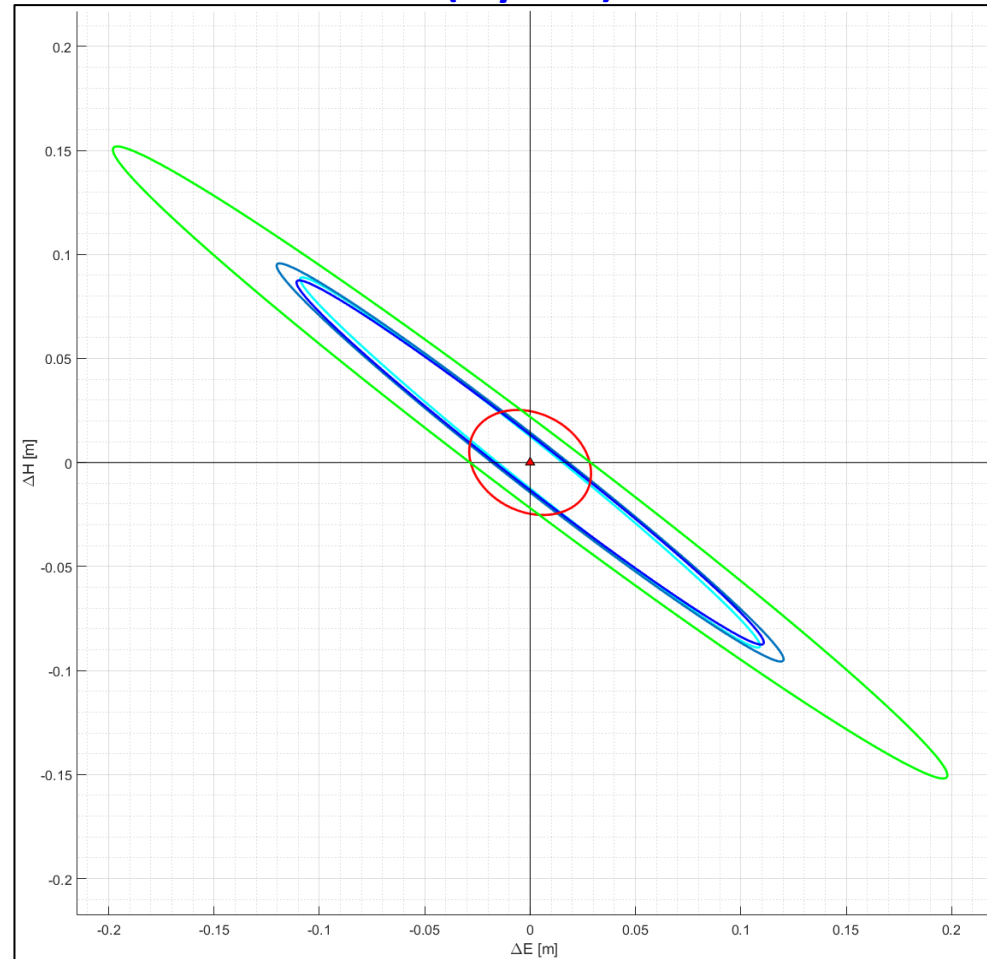
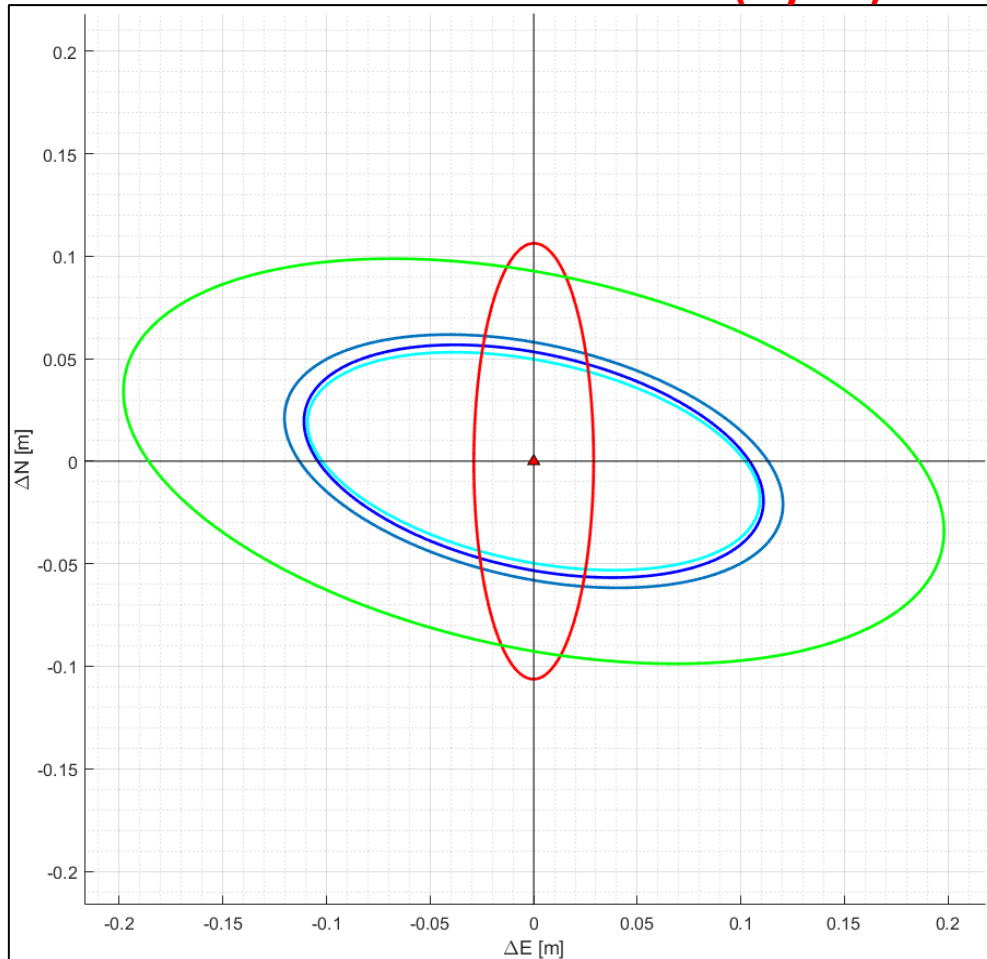
Observations - LOV3 (1 year): 104

Observations - CR04 (1 year): 248

Observations - MET3 (1 year): 164

Observations - MET3 (2 years): 312

Observations - MET3 (3 years): 404



5. Conclusion

➤ Dependency of the signal response on the used corner reflectors:

- ❑ Significant differences between passive and active reflectors
 - ❑ Influenced also by the type of passive reflectors
- } Nevertheless in all examples: Strong and easily detectable reflection

➤ Achieving high precisions in the explored time intervals:

- ❑ **High precision of positioning results:** 1-6 cm
- ❑ **Fluctuations and renewed instabilities** detectable over multi-annual observations of MET3 station

➤ Strong improvement of precision by using reflectors aligned on **both sides**:

- ❑ **Homogenization of error ellipses** due to bilateral geometry (Directional behavior detectable in both DSC stations)
- ❑ **Increasing the number of observations** in the same time → Faster achievement of the required observations

6. Image Sources

- Cover Slide Scandinavia:

<https://d-maps.com/m/europa/scandinavie/scandinavie06.gif> (Last visited: 01.03.2023).

- Aerial View Images:

<https://www.google.de/maps/preview> (Last visited: 01.03.2023).

- Radar Images:

<https://apps.sentinel-hub.com/sentinel-playground> (Last visited: 01.03.2023).