

Background

Typology of Visio.M vehicles

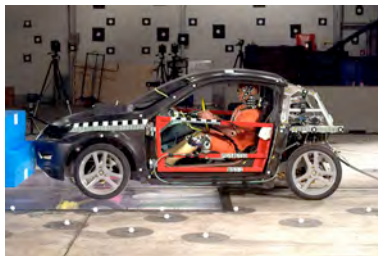
In total four versions of Visio.M (BS 1-4) have been built:



Visio.M BS1: Drivable tubular frame for the testing of vehicle components



Visio.M BS2: Test vehicle of the Visio.M project; body based on the former "MUTE" (blue / black / white finish)



Visio.M BS3: Version similar to BS4 for crash tests (unpainted carbon black) see press release "[Security](#)"



Visio.M BS4: final version of the Visio.M with silver finish.

In the first driving trials and tests the BS4 was still unpainted. Due to the carbon fiber bodywork it is black on these photographs (driving test Aschheim).