



ELSEVIER

Contents lists available at ScienceDirect

## Data in Brief

journal homepage: [www.elsevier.com/locate/dib](http://www.elsevier.com/locate/dib)

## Data Article

# Dataset on the structural characterization of organosolv lignin obtained from ensiled *Poaceae* grass and load-dependent molecular weight changes during thermoplastic processing



Jörg Dörrstein<sup>a</sup>, Ronja Scholz<sup>b</sup>, Dominik Schwarz<sup>c</sup>,  
Doris Schieder<sup>c</sup>, Volker Sieber<sup>c</sup>, Frank Walther<sup>b,\*</sup>,  
Cordt Zollfrank<sup>a,\*</sup>

<sup>a</sup> Chair for Biogenic Polymers, Technical University of Munich (TUM), Schulgasse 16, 94315 Straubing, Germany

<sup>b</sup> Department of Materials Test Engineering (WPT), TU Dortmund University, Baroper Str. 303, 44227 Dortmund, Germany

<sup>c</sup> Chair of Chemistry of Biogenic Resources, Technical University of Munich (TUM), Schulgasse 16, 94315 Straubing, Germany

## ARTICLE INFO

## Article history:

Received 6 December 2017

Received in revised form

18 December 2017

Accepted 22 January 2018

Available online 1 February 2018

## ABSTRACT

This article presents experimental data of organosolv lignin from Poacea grass and structural changes after compounding and injection molding as presented in the research article “Effects of high-lignin-loading on thermal, mechanical, and morphological properties of bioplastic composites” [1]. It supplements the article with morphological (SEM), spectroscopic (<sup>31</sup>P NMR, FT-IR) and chromatographic (GPC, EA) data of the starting lignin as well as molar mass characteristics (mass average molar mass ( $M_w$ ) and Polydispersity (D)) of the extracted lignin. Refer to Schwarz et al. [2] for a detailed description of the production of the organosolv residue and for further information on the raw material used for lignin extraction. The dataset is made publicly available and can be useful for extended lignin research and critical analyzes.

© 2018 The Authors. Published by Elsevier Inc. This is an open access article under the CC BY license (<http://creativecommons.org/licenses/by/4.0/>).

DOI of original article: <https://doi.org/10.1016/j.compstruct.2017.12.003>

\* Corresponding authors.

E-mail addresses: [frank.walther@tu-dortmund.de](mailto:frank.walther@tu-dortmund.de) (F. Walther), [cordt.zollfrank@tum.de](mailto:cordt.zollfrank@tum.de) (C. Zollfrank).

<https://doi.org/10.1016/j.dib.2018.01.060>

2352-3409/© 2018 The Authors. Published by Elsevier Inc. This is an open access article under the CC BY license (<http://creativecommons.org/licenses/by/4.0/>).

## Specifications Table

Subject area	<i>Material Science</i>
More specific subject area	<i>Bioplastic composites, lignin research</i>
Type of data	<i>Tables, images, figures</i>
How data was acquired	<i>Scanning electron microscopy (SEM; DSM 940A, Zeiss, Germany), elemental analysis (EA; Euro EA, Hekatech, Germany), gel permeation chromatography (GPC; SECurtiy, PSS Polymer Standards Service, Germany) equipped with a refractive index detector and a series of linear columns (PSS Gram (30 Å, 1000 Å), AppliChrom ABOA DMSO-Phil-P (100 Å)), High Performance Liquid Chromatography (HPLC; Dionex® equipped with a Rezex ROA-H+ column), 31 Phosphorous NMR (<sup>31</sup>P NMR; JEOL-ECS 400 MHz, Jeol Ltd., Japan), Fourier-transform infrared spectroscopy (FT-IR; Nicolet 380, Thermo Scientific, Germany), image analysis (ImageJ, NIH, USA)</i>
Data format	<i>Raw spectra data, analyzed data, images</i>
Experimental factors	<i>The lignin-rich precipitate obtained from organosolvation of Poacea grass silage was Soxhlet extracted with ethyl acetate (EtOAc). The solid residue was used to fabricate lignin/polyethylene-co-vinyl acetate rubber composites. Thereafter, lignin was re-extracted with dimethyl sulfoxide (DMSO) from the bioplastic composites and structural data were collected</i>
Experimental features	<i>Structural data on lignin from ensiled Poaceae grass is given by solid- and liquid-state methods</i>
Data source location	<i>East Bavaria lower mountain range near Regensburg, Germany (49°14'N; 12°39'E)</i>
Data accessibility	<i>Data is available with this article</i>

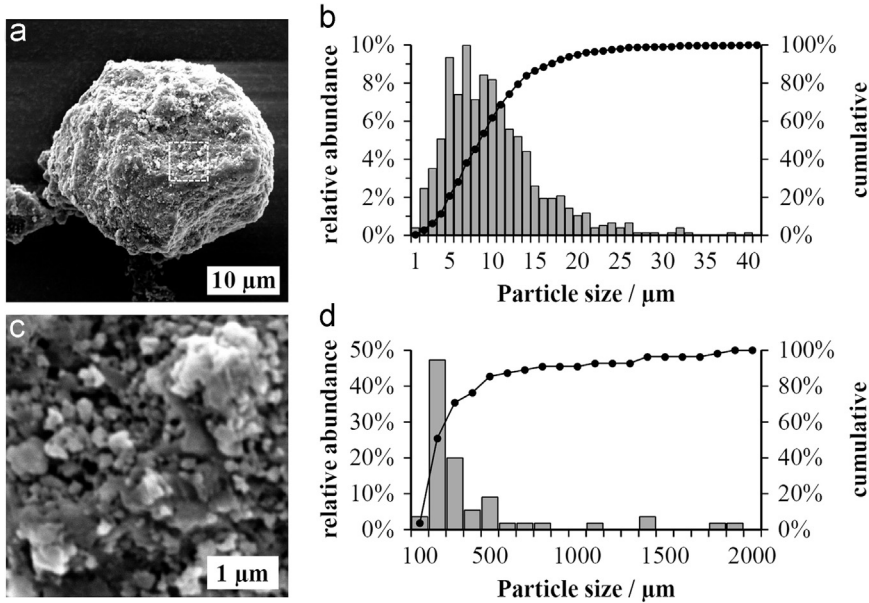
## Value of the data

- The data are convenient to examine the structural characteristics of organosolv lignin from herbaceous plants such as *Poaceae* grass and can be compared with other related studies.
- The data establish a link between lignin content in bioplastic composites and load-dependent molecular weight changes.
- These data allow other researchers to extend the characterization of lignin in highly-filled composites.

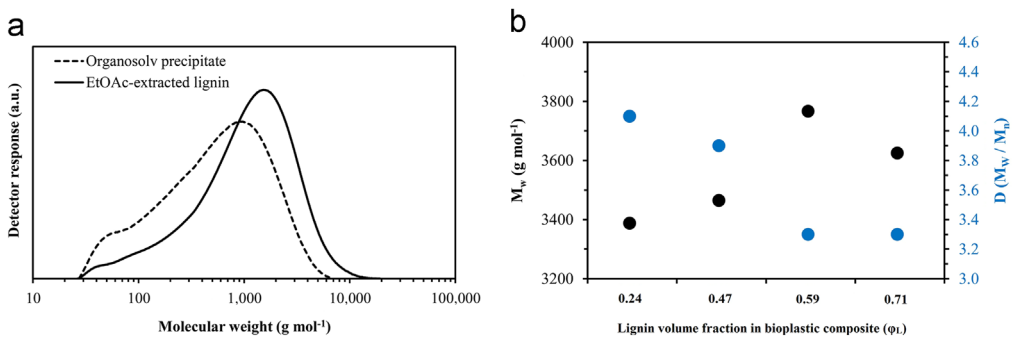
## 1. Data

Morphological characteristics of lignin from *Poaceae* grass are shown in Fig. 1. Molecular weight change upon solvent-extraction of the organosolv residue and molecular weight changes of lignin as a function of lignin loading in processed lignin bioplastic composites [1], are given in Fig. 2. Data on lignin purity are given in Table 1.

Raw spectral data of the starting lignin are shown in Figs. 3 and 4 and band assignments and hydroxyl group contents are given in Tables 2 and 3, respectively.



**Fig. 1.** a) and c) Scanning electron micrographs of a precipitated *Poaceae* grass lignin particle displaying the particle surface and b) and d) size distribution of precipitated lignin particles and size distribution of clustered particles on the particle surface obtained from image analysis.



**Fig. 2.** a) Molecular weight characteristics obtained from GPC of Organosolv precipitate and lignin after extraction with EtOAc. b)  $M_w$  and  $D$  of *Poaceae* grass lignin after injection molding and extraction with DMSO from bioplastic composites corresponding to different lignin volume fractions.

## 2. Experimental design, materials and methods

### 2.1. Sample collection and preparation

A lignin-rich fraction was obtained by organosolvation of a grass silage press cake (PC) batch, described earlier by Schwarz et al. [2]. The obtained solid lignin phase was Soxhlet-extracted for 24 h using ethyl acetate (EtOAc), air dried overnight and then stored at ambient conditions until use.

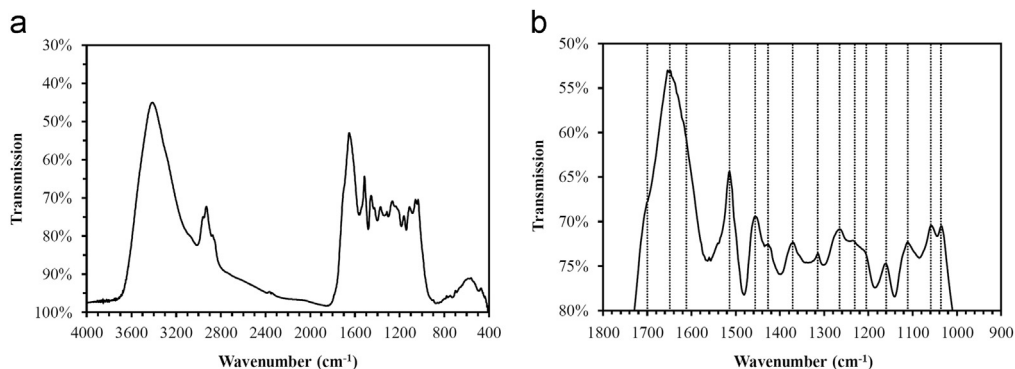
### 2.2. Purity analysis

Lignin purity analysis was conducted according to NREL standard methods [11]. Acid insoluble lignin (Klason lignin) was examined by sulfuric acid hydrolysis. Residual carbohydrate and ash

**Table 1**

Data on purity analysis of obtained *Poaceae* grass lignin: Mass average molecular weight, residual sugar, ash, sulfur content and mean particle size.

Molar mass		Purity			Mean particle size
$M_w$ ( $\text{g mol}^{-1}$ )	$D$ (dimensionless)	$\Sigma$ sugar (%)	ash	sulfur	$d_p$ ( $\mu\text{m}$ )
1600	3.3	3.0	1.1	0.1	9.5



**Fig. 3.** a) FT-IR spectrum of the isolated lignin (precipitated and EtOAc-extracted) and b) detail of the region below  $1800\text{ cm}^{-1}$ .

content were determined according to NREL/TP-510-48087 and sulfur content was determined using elemental analysis [12]. Measurements were run on vacuum-dried samples in duplicate and data are given as the arithmetic averages.

### 2.3. Fourier-transform infrared spectroscopy (FT-IR)

FT-IR analysis was performed to examine the starting lignin. Direct transmittance was measured by using the KBr pellet technique with a lignin concentration of 0.3 wt% in 300 mg KBr. The following parameters were used: spectral range:  $400\text{--}4000\text{ cm}^{-1}$ , spectral resolution:  $2\text{ cm}^{-1}$ , total scans: 128, background: KBr.

### 2.4. Morphological analysis

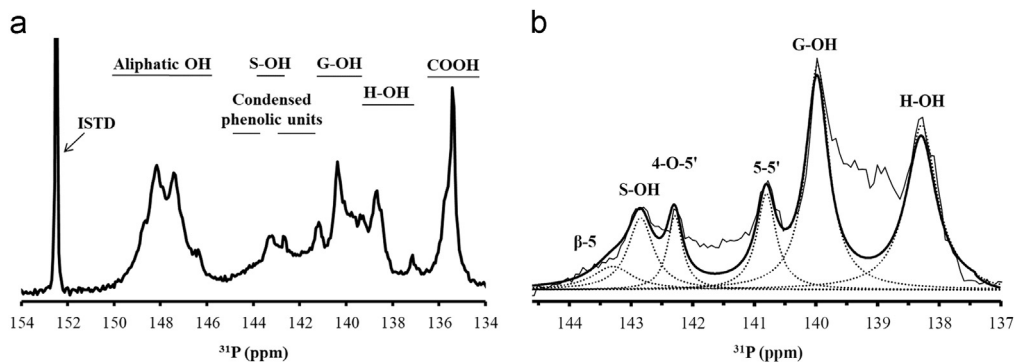
Mean lignin particle size and particle size distribution were evaluated using a scanning electron microscope operated at 10 kV and by image analysis.

### 2.5. $^{31}\text{P}$ NMR

Spectral data were obtained according to a previously reported procedure and data on different functional groups present in lignin were obtained from integration of the spectra and calculated as described herein [13].

### 2.6. Gel permeation chromatography (GPC)

GPC was used to examine the mass average molecular weight and molecular weight distribution of isolated (starting) and processed lignin. For the determination of molecular weight changes following thermoplastic processing, lignin was Soxhlet-extracted for 24 h from ground composites using DMSO and lyophilized. The measurements were performed at  $50\text{ }^\circ\text{C}$  using  $0.075\text{ M DMSO/LiNO}_3$  as the



**Fig. 4.** a)  $^{31}\text{P}$  NMR spectrum of phosphitylated starting lignin. b)  $^{31}\text{P}$  NMR spectra in the overlapping region between 144.5 and 137 ppm with deconvoluted signals.

**Table 2**

FTIR band assignments of starting lignin.

Wavenumber ( $\text{cm}^{-1}$ )	Assignment	Reference
1036	aromatic C-H in-plane deformation ( $G > S$ ); C-O deform. in primary alcohols; C=O stretch (unconj.)	[3–6]
1059	O-H stretch in cellulose	[4]
1111	guaiacyl C-H and syringyl C-H	[4]
1160	C=O stretch in conjugated ester groups, such as p-coumaric acid, typical for HGS lignins	[3,5–8]
1231	C-C stretch; C-O stretch; C=O stretch, G condensed > G etherified	[4,8]
1265	C=O stretch; C-O stretch in guaiacyl aromatic methoxyl groups	[3–9]
~1315	condensed S and G ring (G ring substituted in pos. 5)	[3,5–8]
1371	aliphatic C-H stretch in $\text{CH}_3$ , not in OMe; phen. OH	[3,5–7]
~1427	aromatic ring vibrations of phenyl-propane ( $\text{C}_9$ ) skeleton combined with C-H in-plane deformation	[3–9]
1456	C-H deformation; asym. in $-\text{CH}_3$ and $-\text{CH}_2-$	[3–9]
1514	aromatic skeleton vibrations ( $G > S$ )	[3–9]
~1612	aromatic skeletal vibrations ( $S > G$ ); C=O stretch; G condensed > G etherified	[3,4,6]
1649	C=O stretch; in conjugated p-subst. aryl ketones; conjugated carbonyl and carboxyl; absorbed OH	[6,8–10]
~1700	C=O stretch in unconjugated ketones, carbonyls and in ester groups; conjugated aldehydes and carboxylic acids absorb around and below $1700\text{ cm}^{-1}$	[3–7]
~2863	C-H vibration of methyl group of methoxyl	[3–10]
2929	C-H stretch in $-\text{CH}_3$ and $-\text{CH}_2-$	[3–10]
2964	C-H stretch in $-\text{CH}_3$ and $-\text{CH}_2-$	[3–10]
3411	O-H stretch	[3–10]

**Table 3**

Functional group contents obtained from quantitative  $^{31}\text{P}$  NMR where the assignments S-OH, G-OH, H-OH, COOH, 4-O-5', 5-5', and  $\beta$ -5 correspond to syringyl phenolic units, guaiacyl and demethylated phenolic units, p-hydroxyphenolic units, and carboxylic acids and condensed phenolic units of the 4-O-5', 5-5', and  $\beta$ -5 type.

$\Sigma$ aliph. OH ( $\text{mmol g}^{-1}$ )	$\Sigma$ carboxyl. OH ( $\text{mmol g}^{-1}$ )	$\Sigma$ phenol. OH ( $\text{mmol g}^{-1}$ )	$\beta$ -5 ( $\text{mmol g}^{-1}$ )	S-OH ( $\text{mmol g}^{-1}$ )	4-O-5' ( $\text{mmol g}^{-1}$ )	5-5' ( $\text{mmol g}^{-1}$ )	G-OH ( $\text{mmol g}^{-1}$ )	H-OH ( $\text{mmol g}^{-1}$ )
1.49	0.31	0.59	0.06	0.10	0.07	0.11	0.25	0.23

eluent. Lithium nitrate ( $\text{LiNO}_3$ , anhydrous, 99.98%, Alfa Aesar, Germany) was added to minimize association effects. All samples were made up at 0.1% (w/v) in 0.075 M DMSO/ $\text{LiNO}_3$ . Pullulan polymer standards (PSS) ranging from 180 to 708.000  $\text{g mol}^{-1}$  were used for calibration.

## Acknowledgements

The work was conducted in the frame of the project “Farm-based biorefinery for local supply of diesel fuel” funded by the Bavarian State Ministry of Education, Science and the Arts. We wish to thank Marion Wölbinger, Dr. Tobias Gärtner and Dr. Harald Strittmatter from the Fraunhofer Project Group BioCat in Straubing for their technical assistance.

## Funding

The funding for this research has been received from the Bavarian State Ministry of Education, Science and the Arts under the project “Farm-based biorefinery for local supply of diesel fuel”.

## Transparency document. Supplementary material

Supplementary data associated with this article can be found in the online version at <http://dx.doi.org/10.1016/j.dib.2018.01.060>.

## References

- [1] J. Dörrstein, R. Scholz, D. Schwarz, D. Schieder, V. Sieber, F. Walther, C. Zollfrank, Effects of high-lignin-loading on thermal, mechanical, and morphological properties of bioplastic composites, *Compos. Struct.* in press, <http://dx.doi.org/10.1016/j.compstruct.2017.12.003>.
- [2] D. Schwarz, J. Dörrstein, S. Kugler, D. Schieder, C. Zollfrank, V. Sieber, Integrated biorefinery concept for grass silage using a combination of adapted pulping methods for advanced saccharification and extraction of lignin, *Bioresour. Technol.* 216 (2016) 462–470.
- [3] O. Faix, Classification of lignins from different botanical origins by FT-IR spectroscopy, *Holzforschung* 45 (1991) 21–28.
- [4] K. Pandey, A study of chemical structure of soft and hardwood and wood polymers by FTIR spectroscopy, *J. Appl. Anal. Pyrolysis* 71 (1999) 1969–1975.
- [5] K. Wang, S. Bauer, R.C. Sun, Structural transformation of miscanthus×giganteus lignin fractionated under mild formosolv, basic organosolv, and cellulolytic enzyme conditions, *J. Agric. Food Chem.* 60 (2012) 144–152.
- [6] G. Hu, C. Cateto, Y. Pu, R. Samuel, A.J. Ragauskas, Structural characterization of switchgrass lignin after ethanol organosolv pretreatment, *Energy Fuels* 26 (2012) 740–745.
- [7] H. Nadji, P.N. Diouf, A. Benaboura, Y. Bedard, B. Riedl, T. Stevanovic, Comparative study of lignins isolated from Alfa grass (*Stipa tenacissima* L.), *Bioresour. Technol.* 100 (2009) 3585–3592.
- [8] F. Monteil-Rivera, M. Phuong, M. Ye, A. Halasz, J. Hawari, Isolation and characterization of herbaceous lignins for applications in biomaterials, *Ind. Crop. Prod.* 41 (2013) 356–364.
- [9] Y. Liu, T. Hu, Z. Wu, G. Zeng, D. Huang, Study on biodegradation process of lignin by FTIR and DSC, 2014, pp. 14004–14013.
- [10] O. Faix, B. Andersons, G. Zakis, Determination of carbonyl groups of six round robin lignins by modified oximation and FTIR spectroscopy, *Holzforschung* 52 (1998) 268–274.
- [11] A. Sluiter, B. Hames, R. Ruiz, C. Scarlata, J. Sluiter, D. Templeton, D.C. Nrel, Determination of Structural Carbohydrates and Lignin in Biomass Determination of Structural Carbohydrates and Lignin in Biomass, 2011 (2011).
- [12] J. Sluiter, A. Sluiter, Summative Mass Closure Laboratory Analytical Procedure (LAP) NREL/TP-510-48087, National Renewable Energy Laboratory (2011) 10.
- [13] A. Granata, D.S. Argyropoulos, 2-Chloro-4,4,5,5-tetramethyl-1,3,2-dioxaphospholane, a reagent for the accurate determination of the uncondensed and condensed phenolic moieties in lignins, *J. Agric. Food Chem.* 43 (1995) 1538–1544.